

VORTAC MKK <b>116.1</b> Chan <b>108</b>	APP CRS <b>066°</b>	Rwy Idg TDZE Apt Elev <b>454</b>	N/A N/A <b>454</b>
---	------------------------	-------------------------------------	--------------------------

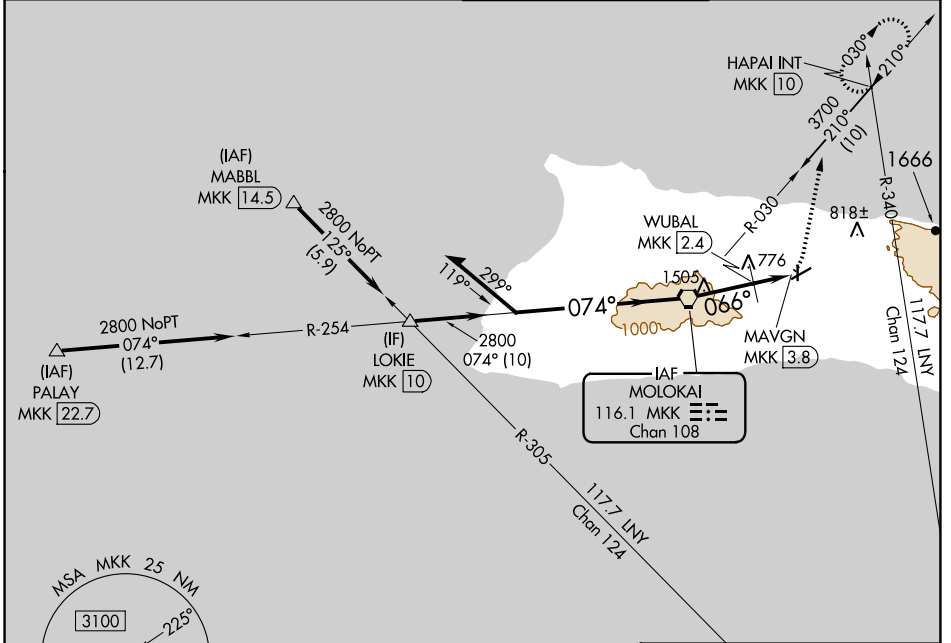
# VOR or TACAN-A

MOLOKAI (MKK) (PHMK)

**⚠** Circling Rwy 17, 23 NA at night.

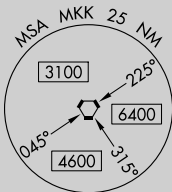
MISSED APPROACH: Climbing left turn to 4000 on heading 360° and on MKK VORTAC R-030 to HAPAI INT/MKK 10 DME and hold, continue climb-in-hold to 4000.

ATIS <b>128.2</b>	HCF CENTER <b>124.1 317.5</b>	MOLOKAI TOWER* <b>125.7 (CTAF) 0 306.2</b>	GND CON <b>121.9</b>
----------------------	----------------------------------	---	-------------------------

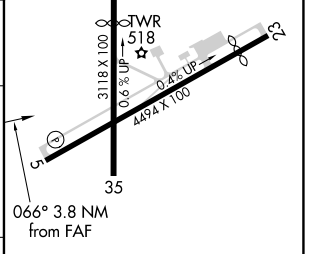
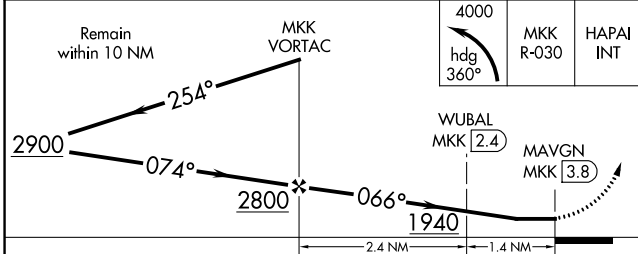


PAC, 23 FEB 2023 to 20 APR 2023

PAC, 23 FEB 2023 to 20 APR 2023



ELEV 454	<b>D</b>
----------	----------



CATEGORY	A	B	C	D
<b>C</b> CIRCLING	1940-1¼ 1486 (1500-1¼)	1940-1½ 1486 (1500-1½)	1940-3	1486 (1500-3)
WUBAL FIX MINIMUMS (DME REQUIRED)				
<b>C</b> CIRCLING	1400-1¼ 946 (1000-1¼)		1680-3 1226 (1300-3)	1940-3 1486 (1500-3)

REIL Rwy 5 <b>0</b>	
MIRL Rlys 5-23 and 17-35 <b>0</b>	
FAF to MAP 3.8 NM	
Knots	60 90 120 150 180
Min:Sec	3:48 2:32 1:54 1:31 1:16