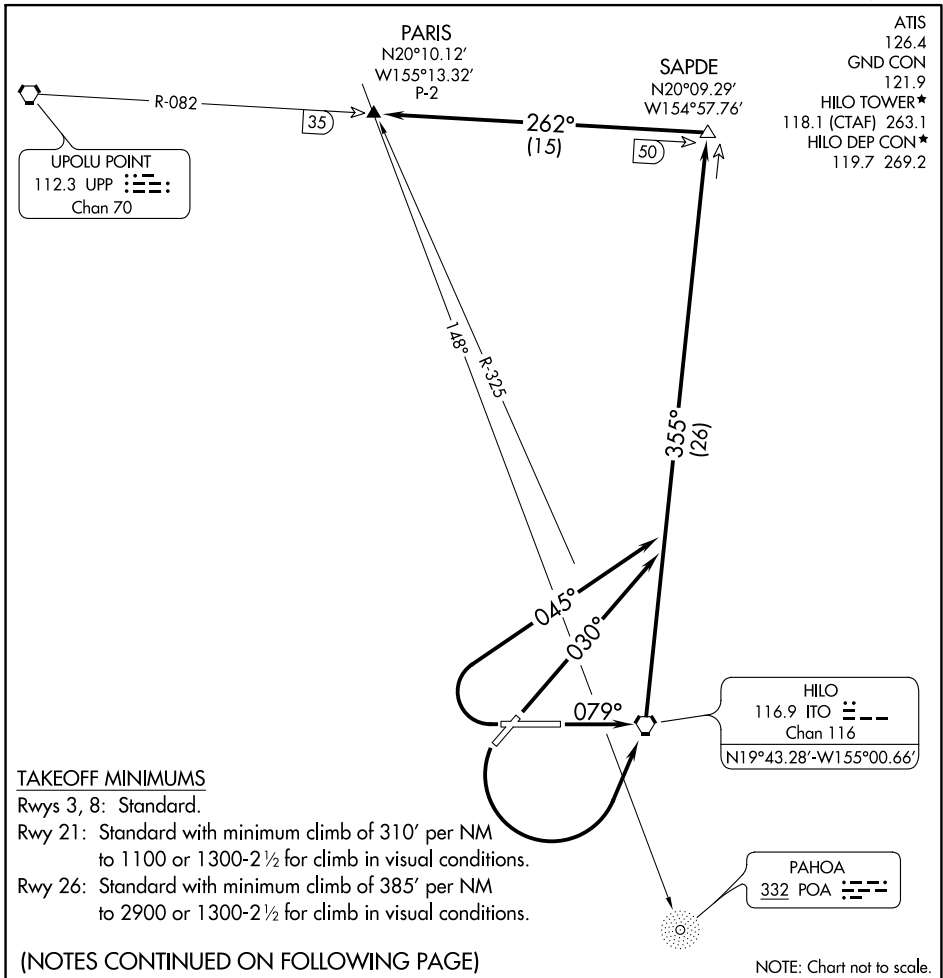


(PARIS4.PARIS) 16259

# PARIS FOUR DEPARTURE (OBSTACLE)

SL-756 (FAA)

HILO INTL (ITO)(PHTO)  
HILO, HAWAII



PAC, 23 FEB 2023 to 20 APR 2023

PAC, 23 FEB 2023 to 20 APR 2023

## DEPARTURE ROUTE DESCRIPTION

**TAKEOFF RUNWAY 3:** Climb heading 030° and ITO R-355 to SAPDE INT, thence. . . .

**TAKEOFF RUNWAY 8:** Climb heading 079° to ITO VORTAC and ITO R-355 to SAPDE INT, thence. . . .

**TAKEOFF RUNWAY 21:** Climbing left turn direct ITO VORTAC and ITO R-355 to SAPDE INT, or climb in visual conditions to cross ITO VORTAC northbound at or above 1200 MSL, then via R-355 to SAPDE INT, thence. . . .

**TAKEOFF RUNWAY 26:** Climbing right turn via heading 045° and ITO R-355 to SAPDE INT, or climb in visual conditions to cross ITO VORTAC northbound at or above 1200 MSL, then via R-355 to SAPDE INT, thence. . . .

. . . .proceed via UPP R-082 to PARIS INT.

# PARIS FOUR DEPARTURE (OBSTACLE)

(PARIS4.PARIS) 11FEB10

HILO, HAWAII  
HILO INTL (ITO)(PHTO)