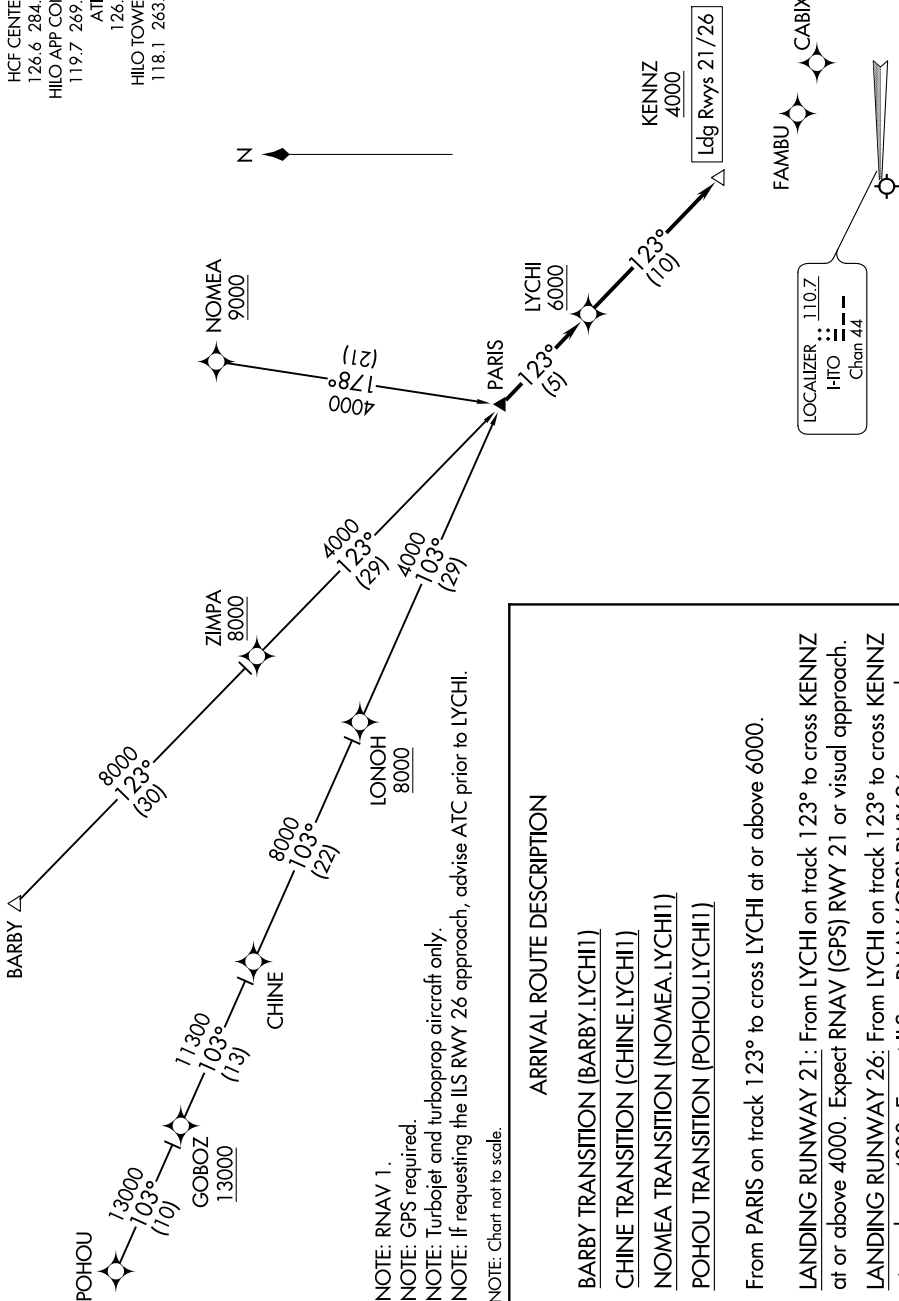
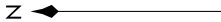


HCF CENTER  
126.6 284.6  
HILO APP CON\*  
119.7 269.2  
ATIS  
126.4  
HILO TOWER\*  
118.1 263.1



NOTE: RNAV 1.  
 NOTE: GPS required.  
 NOTE: Turbojet and turboprop aircraft only.  
 NOTE: If requesting the ILS RWY 26 approach, advise ATC prior to LYCHI.  
 NOTE: Chart not to scale.

**ARRIVAL ROUTE DESCRIPTION**

BARBY TRANSITION (BARBY.LYCHI1)  
CHINE TRANSITION (CHINE.LYCHI1)  
NOMEA TRANSITION (NOMEA.LYCHI1)  
POHOU TRANSITION (POHOU.LYCHI1)

From PARIS on track 123° to cross LYCHI at or above 6000.

LANDING RUNWAY 21: From LYCHI on track 123° to cross KENNZ at or above 4000. Expect RNAV (GPS) RWY 21 or visual approach.

LANDING RUNWAY 26: From LYCHI on track 123° to cross KENNZ at or above 4000. Expect ILS or RNAV (GPS) RWY 26 approach.