


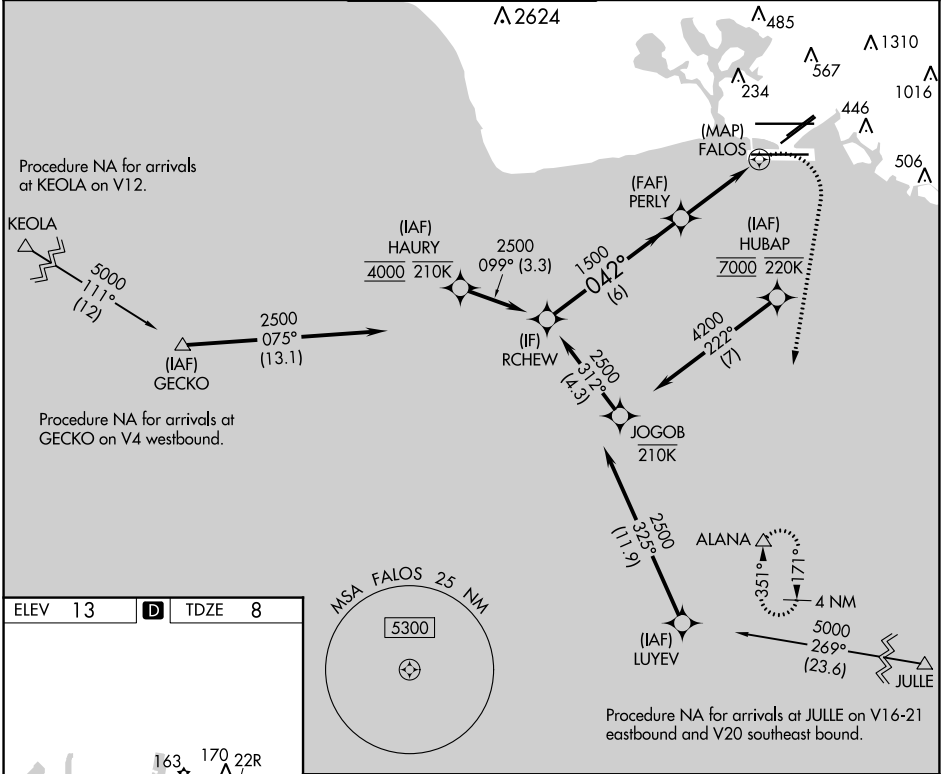
# RNAV (GPS) Y RWY 4R

DANIEL K INOUYE INTL (HNL) (PHNL)

APP CRS	Rwy Idg	<b>8950</b>
<b>042°</b>	TDZE	<b>8</b>
	Apt Elev	<b>13</b>

<p><b>RNP APCH.</b></p> <p><b>⚠</b> Circling Rwy 22R NA at night. Circling NA for Cats A and B northwest of Rwy 8L and 22R. Circling NA for Cats C and D north of Rwy 8L-26R. For inop ALS, increase LNAV Cat E visibility to 2 SM. Circling NA to sea lanes 4W, 8W, 22W, and 26W. HUBAP transition NA for Cat E aircraft. HAURY transition NA for Cat E aircraft.</p>		<p>MALSR</p> 	<p><b>MISSED APPROACH:</b> Climbing right turn to 3000 direct ALANA and hold.</p>
--	--	--	---

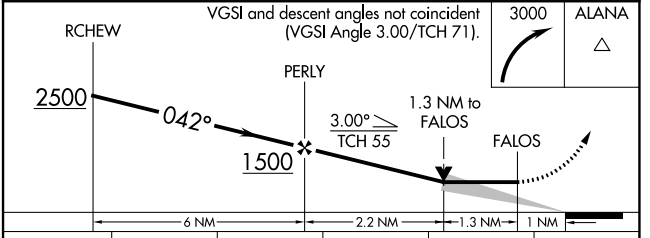
D-ATIS	HCF APPROACH	HONOLULU TOWER	GND CON	CLNC DEL
<b>127.9 251.15</b>	<b>118.3 269.0</b>	<b>118.1 257.8</b> <b>123.9 273.575</b> (Rwy 8R/26L)	<b>121.9 348.6</b>	<b>121.4 281.4</b>



ELEV 13	<b>D</b>	TDZE 8
---------	----------	--------

WATER RWYS:  
8W-26W 5090 X 300  
4W-22W 3000 X 150

REIL Rwws 4L, 8R, 22L, 22R and 26R  
HIRL Rwws 4L-22R, 4R-22L, 8L-26R and 8R-26L



CATEGORY	A	B	C	D	E
LNAV MDA	460- $\frac{3}{4}$	452 (500- $\frac{3}{4}$ )	460- $\frac{7}{8}$	452 (500- $\frac{7}{8}$ )	460- $\frac{1}{4}$ 452 (500- $\frac{1}{4}$ )
<b>C</b> CIRCLING	680- $\frac{1}{4}$ 667 (700- $\frac{1}{4}$ )	760- $\frac{1}{4}$ 747 (800- $\frac{1}{4}$ )	820- $\frac{2}{4}$ 807 (900- $\frac{2}{4}$ )	1400-3 1387 (1400-3)	NA

PAC, 23 FEB 2023 to 20 APR 2023

PAC, 23 FEB 2023 to 20 APR 2023