

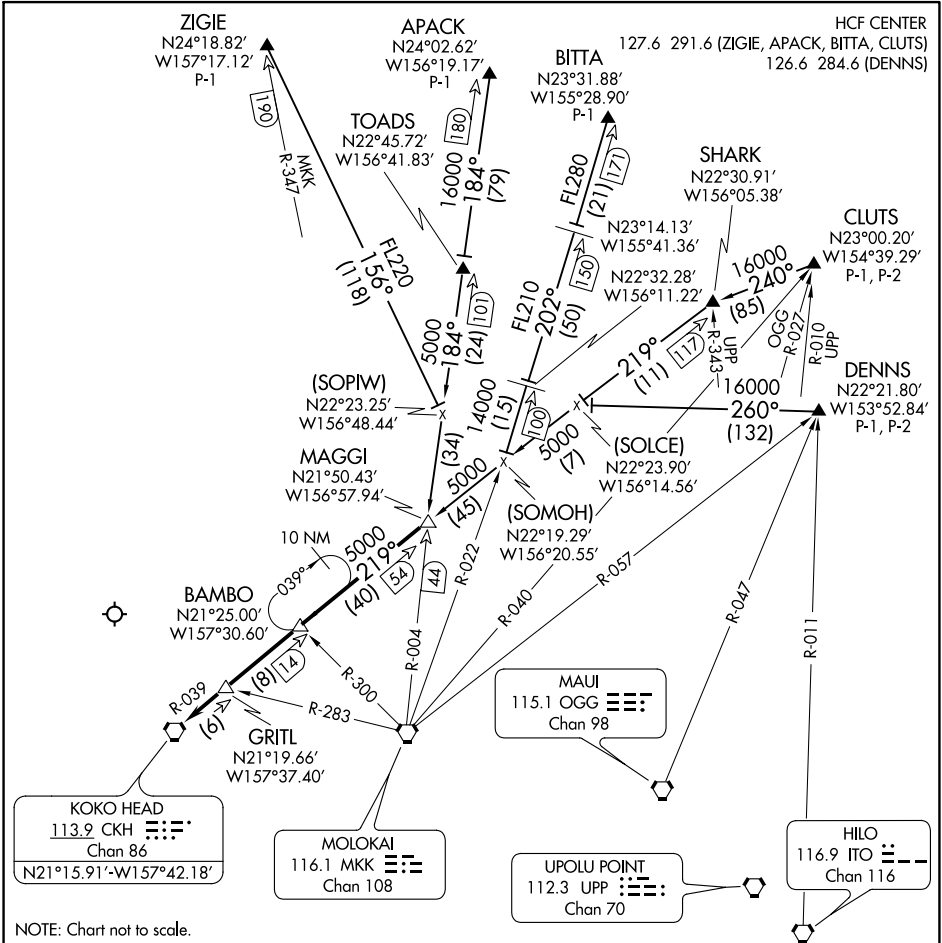
MAGGI THREE ARRIVAL

AL-754 (FAA)

DANIEL K INOUYE INTL (HNL) (PHNL)
HONOLULU, HAWAII

PAC, 23 FEB 2023 to 20 APR 2023

PAC, 23 FEB 2023 to 20 APR 2023



NOTE: Chart not to scale.

ARRIVAL ROUTE DESCRIPTION

APACK TRANSITION (APACK.MAGGI3): From over APACK DME via MKK R-004 to MAGGI INT. Thence. . .

BITTA TRANSITION (BITTA.MAGGI3): From over BITTA DME via MKK R-022 to intercept CKH R-039 to MAGGI INT. Thence. . .

CLUTS TRANSITION (CLUTS.MAGGI3): From over CLUTS DME via heading 240° to intercept CKH R-039 to MAGGI INT. Thence. . .

DENNS TRANSITION (DENNS.MAGGI3): From over DENNS INT via heading 260° to intercept CKH R-039 to MAGGI INT. Thence. . .

ZIGIE TRANSITION (ZIGIE.MAGGI3): From over ZIGIE DME via heading 156° to intercept MKK R-004 to MAGGI INT. Thence. . .

. . . From over MAGGI INT via CKH R-039 to CKH VORTAC then RADAR vectors for approach to airport.