

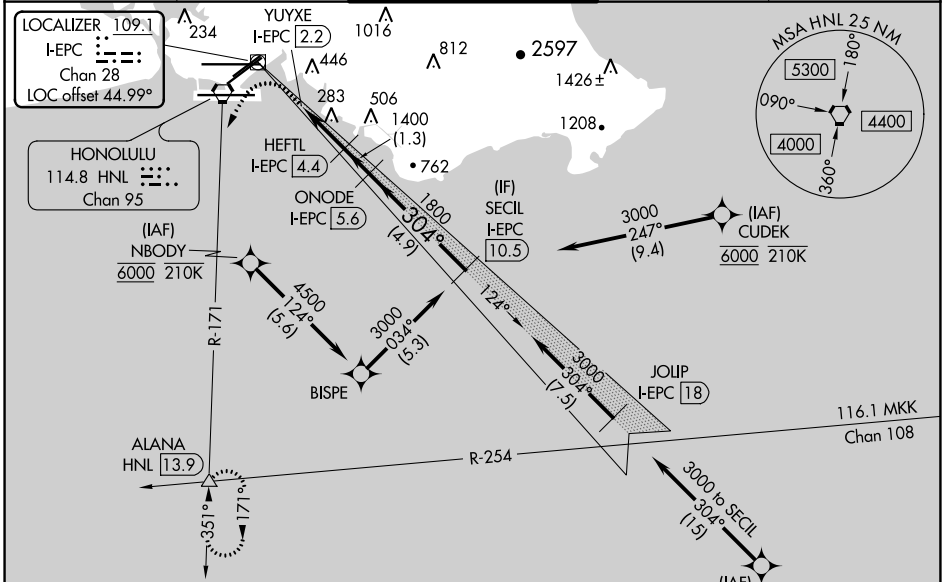
LOC/DME I-EPC 109.1 Chan 28	APP CRS 304°	Rwy Idg 12000 TDZE 10 Apt Elev 13
--	------------------------	--

LDA RWY 26L

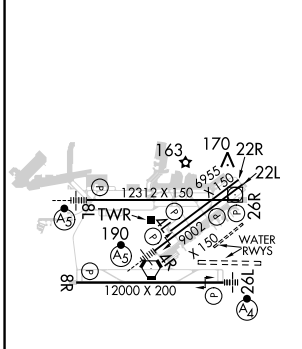
DANIEL K INOUEY INTL (HNL) (PHNL)

DME required. From CUDEK, NBODY, SHLAE, SHLAE: RNAV 1-GPS required.		MALSF 	MISSED APPROACH: Climb to 600 then climbing left turn to 3000 on HNL VORTAC R-171 to ALANA INT/ HNL 13.9 DME and hold.
NA	Circling Rwy 22R NA at night. Circling NA to sea lanes 4W, 8W, 22W and 26W. NBODY transition, CUDEK transition, SHLAE transition NA for Cat E aircraft. Follow flasher lights to Rwy 26L. Procedure NA when ALS or SFL inop. Circling Cat E NA. Circling NA for Cats A and B northwest of Rwy 8L-22R. Circling NA for Cats C and D north of Rwy 8L-26R.		

D-ATIS 127.9 251.15	HCF APPROACH 118.3 269.0	HONOLULU TOWER 118.1 257.8 123.9 273.575 (Rwy 8R/26L)	GND CON 121.9 348.6	CLNC DEL 121.4 281.4
-------------------------------	------------------------------------	---	-------------------------------	--------------------------------



ELEV 13	D	TDZE 10
---------	----------	---------



Procedure NA for arrivals at SAKKI on V16-21 eastbound.	<p>600 3000 ALANA VGS1 and descent angles not coincident (VGS1 Angle 3.00/TCH 75).</p> <p>HNL R-171</p> <p>Use I-EPC DME when on the localizer course.</p> <p>YUYXE I-EPC 2.2</p> <p>HEFTL I-EPC 4.4</p> <p>ONODE I-EPC 5.6</p> <p>SECIL I-EPC 10.5</p> <p>SAKKI I-EPC 33.3</p> <p>JOLIP I-EPC 18</p> <p>SHLAE I-EPC 33.3</p> <p>3000 304 (15)</p> <p>3000 304 (15.3)</p> <p>3000 304 (14.9)</p> <p>3000 304 (7.5)</p> <p>3000 304 (5.3)</p> <p>4500 124 (5.5)</p> <p>1800 124 (1.3)</p> <p>1400 1400 (1.3)</p> <p>506 506 (1.3)</p> <p>283 283 (1.3)</p> <p>1016 1016 (1.3)</p> <p>812 812 (1.3)</p> <p>2597 2597 (1.3)</p> <p>1426± 1426± (1.3)</p> <p>1208 1208 (1.3)</p> <p>MSA HNL 25 NM</p> <p>5300 4400 4000</p> <p>090° 360° 180°</p>				
CATEGORY	A	B	C	D	E
S-LDA 26L	600-2 590 (600-2)				
CIRCLING	680-2¼ 667 (700-2¼)	760-2¼ 747 (800-2¼)	820-2¼ 807 (900-2¼)	1400-3 1387 (1400-3)	NA

PAC, 23 FEB 2023 to 20 APR 2023

PAC, 23 FEB 2023 to 20 APR 2023