

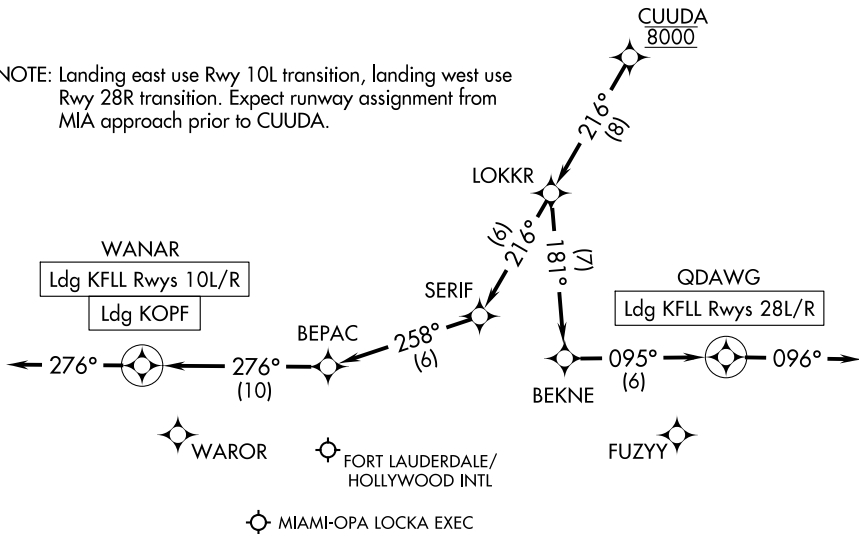
CUUDA TWO ARRIVAL (RNAV) Arrival Routes

FORT LAUDERDALE, FLORIDA

MIAMI APP CON
 133.775 371.9
 FLL D-ATIS
 135.0
 OPF ATIS
 125.9

RNAV 1-DME/DME/IRU or GPS.
RADAR required.

NOTE: Landing east use Rwy 10L transition, landing west use Rwy 28R transition. Expect runway assignment from MIA approach prior to CUUDA.



NOTE: Chart not to scale.

ARRIVAL ROUTE DESCRIPTION

KFFL: From CUUDA on track 216° to LOKKR.

LANDING KFFL RUNWAYS 10L/R: From LOKKR on track 216° to SERIF, then on track 258° to BEPAC, then on track 276° to WANAR, then on track 276°. Expect RADAR vectors to final approach course.

LANDING KFFL RUNWAYS 28L/R: From LOKKR on track 181° to BEKNE, then on track 095° to QDAWG, then on track 096°. Expect RADAR vectors to final approach course.

LANDING KOPF: From CUUDA on track 216° to LOKKR, then on track 216° to SERIF, then on track 258° to BEPAC, then on track 276° to WANAR, then on track 276°. Expect RADAR vectors to final approach course.