


WAAS CH 65602 W36A	APP CRS 004°	Rwy Idg 8002 TDZE 808 Apt Elev 808
--	------------------------	---

RNAV (GPS) RWY 36

WITTMAN RGNL (OSH)

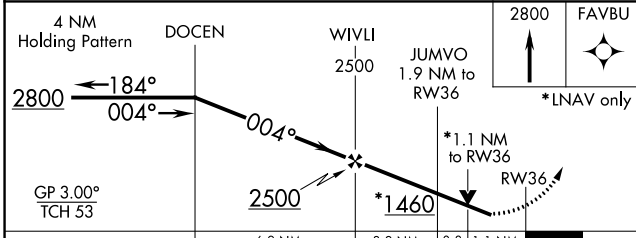
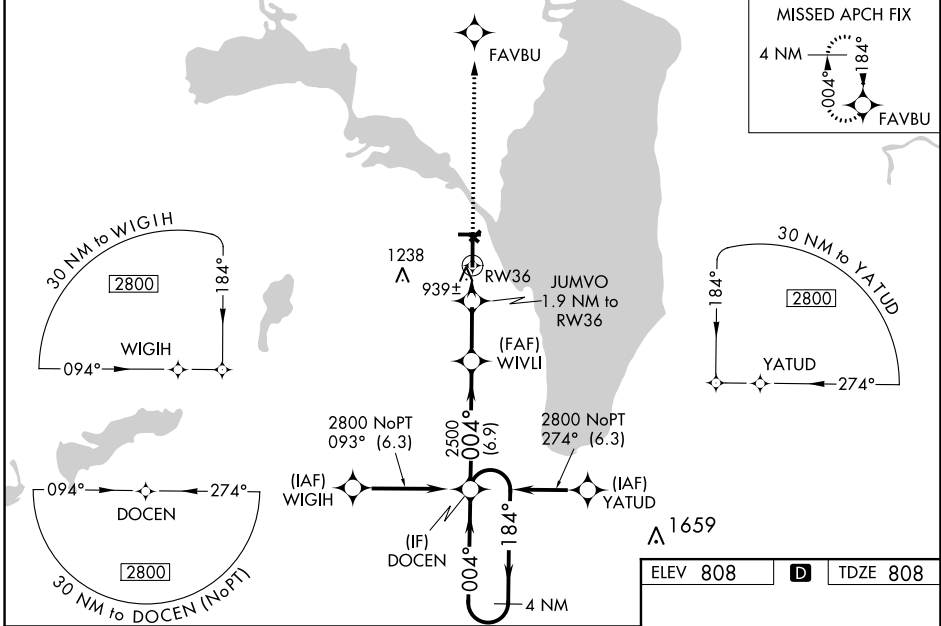
⚠ For uncompensated Baro-VNAV systems, LNAV/VNAV NA below -20°C (-4°F) or above 54°C (130°F). DME/DME RNP-0.3 NA. When local altimeter setting not received, use Fond Du Lac altimeter setting and increase all DA 31 feet and all MDA 40 feet; increase LNAV/VNAV all Cats visibility to RVR 5600, increase LNAV Cat C/D visibility to RVR 4000, increase Circling Cat D visibility ¼ mile. For inop MALS when using Fond Du Lac altimeter setting, increase LNAV/VNAV all Cats visibility to 1½ mile and LNAV Cats C/D to RVR 6000. Baro-VNAV and VDP NA when using Fond Du Lac altimeter setting. Circling to Rwy 5, 23 and 31 NA at night. # RVR 1800 authorized with use of FD or AP or HUD to DA, NA when using Fond Du Lac altimeter setting.

MALS



MISSED APPROACH:
Climb to 2800 direct FAVBU and hold.

ATIS 125.9	MILWAUKEE APP CON 127.0 263.075	OSHKOSH TOWER ★ 118.5 (CTAF) 290.9	GND CON 132.3	UNICOM 122.95
----------------------	---	--	-------------------------	-------------------------



ELEV 808	D	TDZE 808
----------	----------	----------

CATEGORY	A	B	C	D
LPV DA#		1008/24	200 (200-½)	
LNAV/VNAV DA		1247/50	439 (500-1)	
LNAV MDA	1200/24	392 (400-½)	1200/35	392 (400-⅝)
C CIRCLING	1280-1 472 (500-1)	1300-1 492 (500-1)	1360-1½ 552 (600-½)	1440-2 632 (700-2)

EC-3, 23 MAR 2023 to 20 APR 2023

EC-3, 23 MAR 2023 to 20 APR 2023