

MAYPORT, FLORIDA

# COPTER RNAV (GPS) RWY 23

WAAS CH 45485 W23B	APCH CRS 229°	Rwy ldg TDZE Arprt Elev	8001 15 15
--------------------------	------------------	-------------------------------	------------------

AL-722 (USN)

MAYPORT NS (ADM DAVID L MC DONALD FLD) (KNRB)

⚠ \* LPV and LNAV/VNAV procedures are authorized only when the St. Johns River is clear of vessels from the mouth of Haulover Creek to St. Johns Point. ATC will advise aircraft on final approach if a conflict is present and coordinate a missed approach as required. Does not apply to practice approaches in VMC. Visibility Reduction by Helicopters NA.

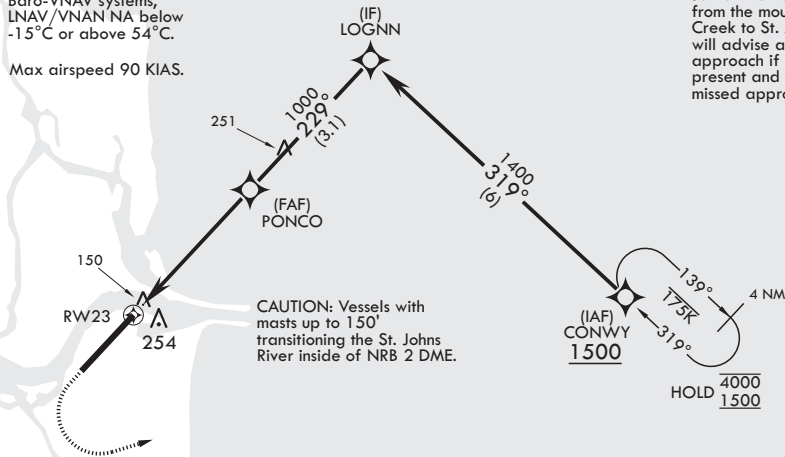
MISSED APPROACH: Climb to 600 then climbing left turn to 1500 direct to CONWY and hold.

ATIS★ 236.775	JACKSONVILLE APP CON/DEP CON 124.9 308.4	TOWER★ 118.75 239.3 ☺	GND CON 126.5 233.7	ASR/PAR
------------------	---	--------------------------	------------------------	---------

## RNP APCH

For uncompensated Baro-VNAV systems, LNAV/VNAV NA below -15°C or above 54°C.

Max airspeed 90 KIAS.



This approach is not authorized at night when the VGSI is inop, unless the St. Johns River is clear of vessels from the mouth of Haulover Creek to St. Johns Point. ATC will advise aircraft on final approach if a conflict is present and coordinate a missed approach as required.

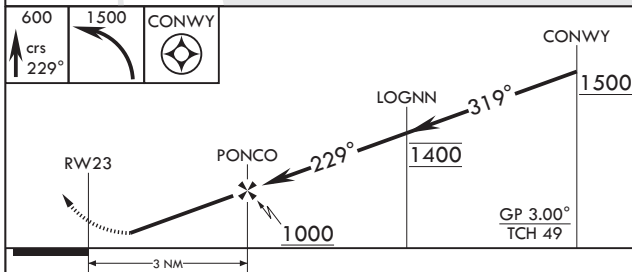
CAUTION: Vessels with masts up to 150' transiting the St. Johns River inside of NRB 2 DME.

SE-3, 23 MAR 2023 to 20 APR 2023

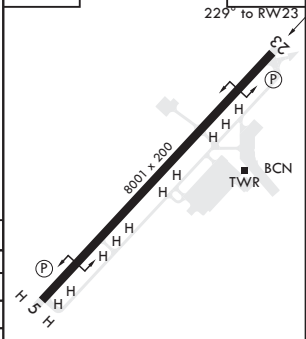
SE-3, 23 MAR 2023 to 20 APR 2023

## RADAR REQUIRED

EMERG SAFE ALT 100 NM 2800



ELEV 15 TDZE 15



CATEGORY	COPTER	
LPV DA*	319-1	304 (400-1)
LNAV/VNAV DA*	385-1	370 (400-1)
LNAV MDA	520-1	505 (600-1)
<b>C</b> CIRCLING	560-1	545 (600-1)

HIRL all Rwys  
REIL all Rwys ☺

MAYPORT, FLORIDA

30°23'N - 81°25'W MAYPORT NS (ADM DAVID L MC DONALD FLD) (KNRB)

Orig 24MAR22

# COPTER RNAV (GPS) RWY 23