

WAAS CH <b>82200</b> <b>W18A</b>	APP CRS <b>185°</b>	Rwy Idg TDZE Apt Elev	<b>6107</b> <b>592</b> <b>592</b>
--	------------------------	-----------------------------	---

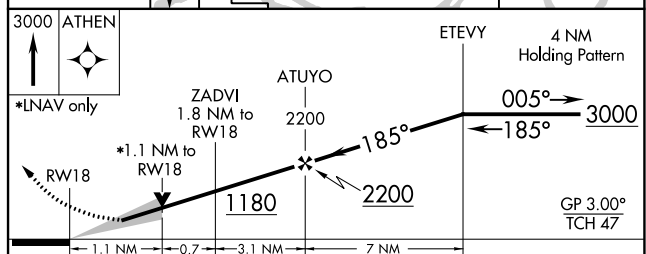
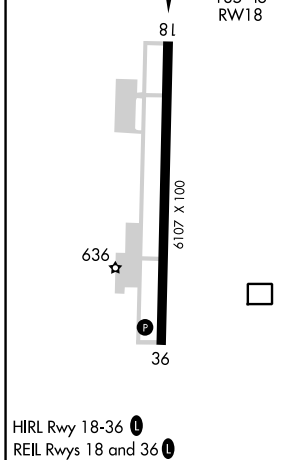
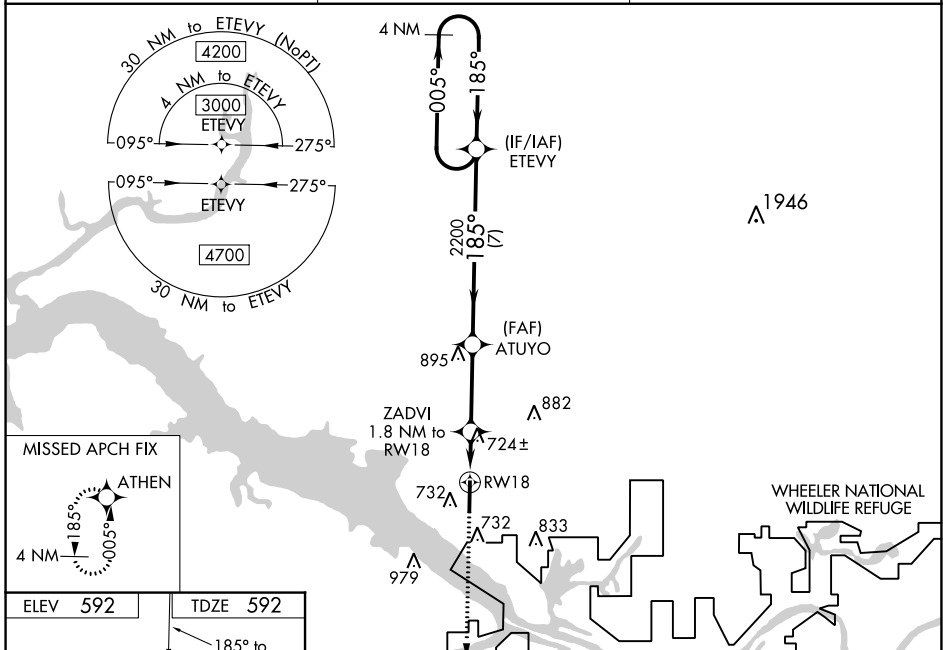
# RNAV (GPS) RWY 18

PRYOR FLD RGNL (DCU)

**⚠** DME/DME RNP-0.3 NA. When local altimeter setting not received, use Huntsville Intl-Carl T Jones Fld altimeter setting: increase LPV DA to 817 and LNAV/VNAV DA to 920 and all visibilities ½ mile. Increase all MDA 40 feet and LNAV Cat C and D visibility ⅓ mile. VDP and Baro-VNAV NA when using Huntsville Intl-Carl T Jones Fld altimeter setting. For uncompensated Baro-VNAV systems, LNAV/VNAV NA below -11°C (13°F) or above 54°C (130°F).

MISSED APPROACH: Climb to 3000 direct ATHEN and hold.

ASOS <b>118.375</b>	HUNTSVILLE APP CON* <b>118.05 239.0</b>	UNICOM <b>123.075 (CTAF) 0</b>
------------------------	--	-----------------------------------



CATEGORY	A	B	C	D
LPV DA		792-¾	200 (200-¾)	
LNAV/VNAV DA		895-1	303 (400-1)	
LNAV MDA	980-1	388 (400-1)	980-1⅛	388 (400-1⅛)
<b>C</b> CIRCLING	1040-1 448 (500-1)	1060-1 468 (500-1)	1340-2¼ 748 (800-2¼)	1340-2½ 748 (800-2½)

SE-4, 23 MAR 2023 to 20 APR 2023

SE-4, 23 MAR 2023 to 20 APR 2023