

CAMP DOUGLAS, WISCONSIN

# ILS or LOC/DME RWY 27

LOC I-VOK <b>108.5</b>	APCH CRS <b>269°</b>	Rwy Ldg THRE Arprt Elev <b>9000</b> <b>904</b> <b>912</b>	AL-714 [USAF]	VOLK FLD (KVOK)
---------------------------	-------------------------	--	---------------	-----------------

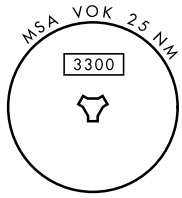
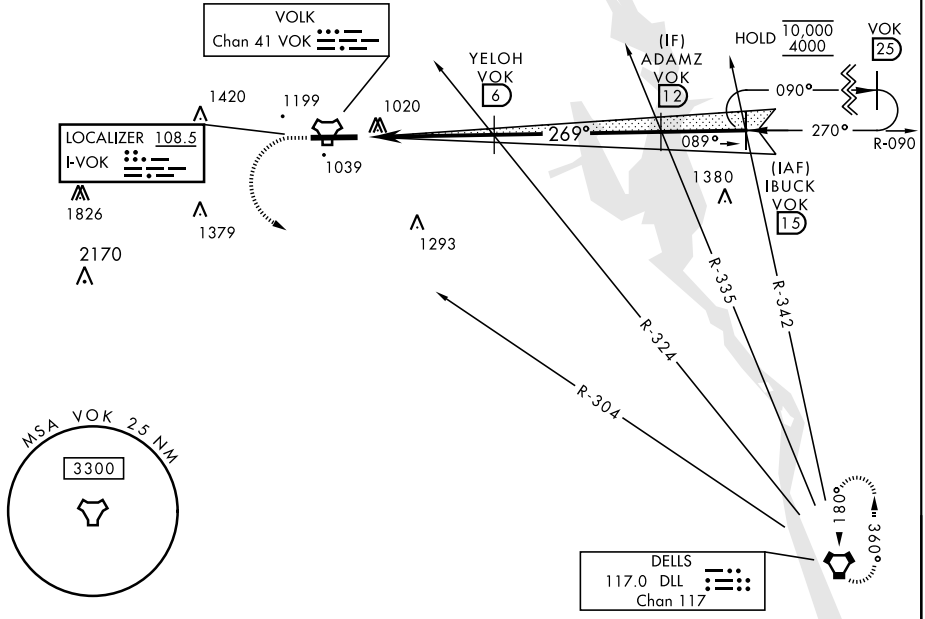
\* When ALS inop, increase vis to ¾ mile.  
 \*\* When ALS inop, increase CAT AB vis to 1 mile, CAT CDE vis to 1½ miles.
 

 ALSF-1  

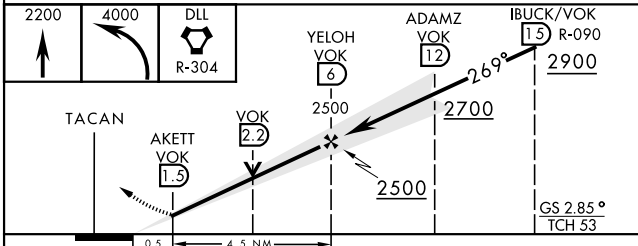
 MISSED APPROACH: Climb to 2200, then climbing left turn to 4000 via DLL VORTAC R-304 direct DLL and hold.

ATIS <b>134.35 257.85</b>	APP CON <b>135.25 244.875</b>	TOWER * <b>127.5</b> (CTAF) <b>239.25</b>	GND CON <b>121.9 275.8</b>
------------------------------	----------------------------------	--	-------------------------------

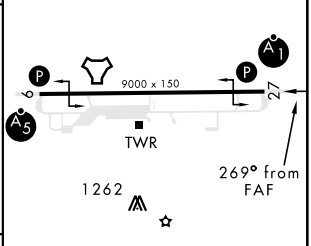
\*\*\* Circling NA South of Rwy 9-27.



EMERG SAFE ALT 100 NM 4200



ELEV 912	THRE 904
----------	----------



CATEGORY	A	B	C	D	E
S-ILS 27 *	1104/24		200	(200-½)	
S-LOC 27 **	1320/24	416 (500-½)	1320/40	416 (500-¾)	
CIRCLING ***	1400-1 488 (500-1)	1500-1 588 (600-1)	1500-1½ 588 (600-1½)	1500-2 588 (600-2)	1580-2¼ 668 (700-2¼)

HIRL Rwy 9-27					
FAF to MAP 4.5 NM					
Knots	60	90	120	150	180
Min:Sec	4:30	3:00	2:15	1:48	1:30

CAMP DOUGLAS, WISCONSIN 43°56'N-90°15'W VOLK FLD (KVOK)

Amtd 4

# ILS or LOC/DME RWY 27

EC-3, 23 MAR 2023 to 20 APR 2023

EC-3, 23 MAR 2023 to 20 APR 2023