

WAAS CH 69612 W14A	APP CRS 146°	Rwy Idg TDZE Apt Elev	6157 77 80
--	------------------------	-----------------------------	---------------------------------------

RNAV (GPS) Y RWY 14

REPUBLIC (F/RG)

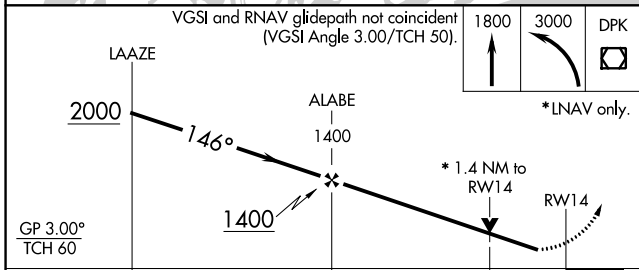
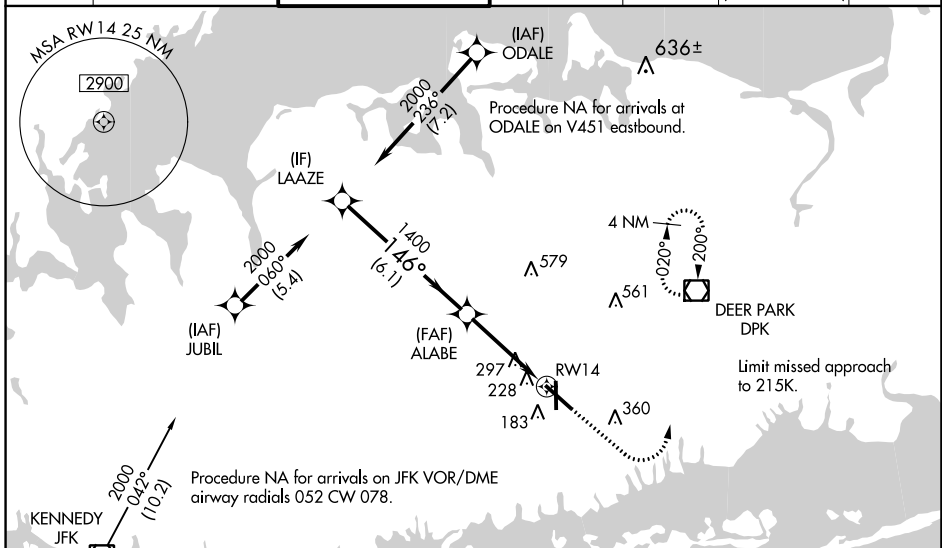
RNP APCH.

⚠ Inop table does not apply to LPV. For uncompensated Baro-VNAV systems, LNAV/VNAV NA below -15°C or above 54°C. For inop MALSR: increase LNAV/VNAV all Cats visibility to 1; LNAV Cats A/B visibility to 1; LNAV Cats C/D visibility to 1½. Baro-VNAV and VDP NA when using Islip altimeter setting. When local altimeter setting not received, use Islip altimeter setting; increase LPV DA to 314 feet; increase LNAV/VNAV DA to 426 feet; increase all MDAs 40 feet and visibility Cat C ¼ SM.

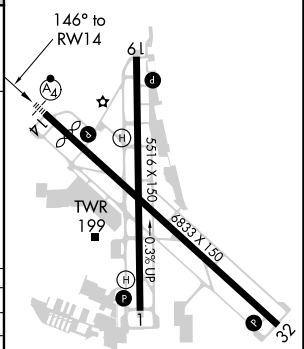
MALSR
⚠

MISSED APPROACH:
Climb to 1800 then climbing left turn to 3000 direct DPK VOR/DME and hold, continue climb-in-hold to 3000.

ATIS 126.65	NEW YORK APP CON 128.125 269.0	REPUBLIC TOWER ★ 118.8 (CTAF) 0 279.65	GND CON 121.6 269.6	CLNC DEL 128.25	CLNC DEL 128.25 (When twr closed)	UNICOM 122.95
-----------------------	--	---	-------------------------------	---------------------------	--	-------------------------



ELEV 80	D TDZE 77
---------	-----------



CATEGORY	A	B	C	D
LPV DA		277-¾	200 (200-¾)	
LNAV/VNAV DA		389-¾	312 (400-¾)	
LNAV MDA	560-¾ 483 (500-¾)		560-1 483 (500-1)	
CIRCLING	640-1 560 (600-1)	720-1 640 (700-1)	860-2 ¼ 780 (800-2 ¼)	1000-3 920 (1000-3)

REIL Rwy 1, 19, and 32 **Ⓛ**
MIRL Rwy 1-19 **Ⓛ**
HIRL Rwy 14-32 **Ⓛ**

NE-2, 23 MAR 2023 to 20 APR 2023

NE-2, 23 MAR 2023 to 20 APR 2023