

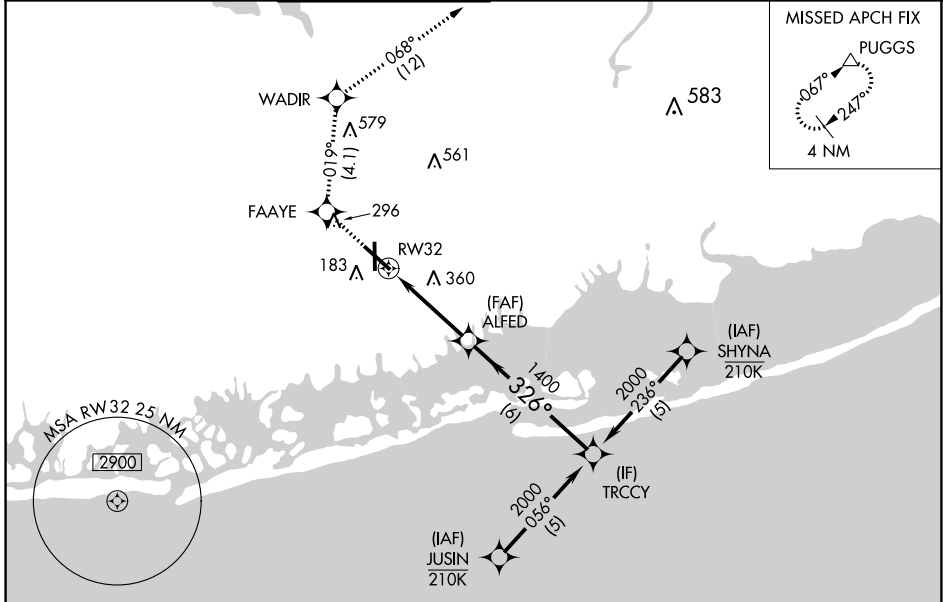
WAAS CH <b>70715</b> <b>W32A</b>	APP CRS <b>326°</b>	Rwy Idg TDZE Apt Elev	<b>6833</b> <b>68</b> <b>80</b>
--	------------------------	-----------------------------	---------------------------------------

# RNAV (GPS) RWY 32

REPUBLIC (F/RG)

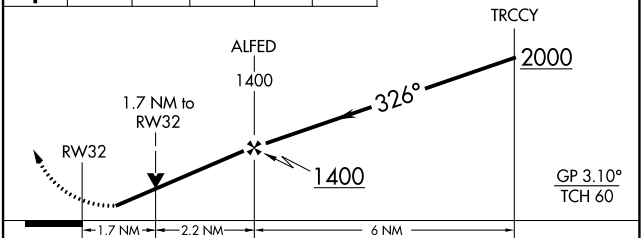
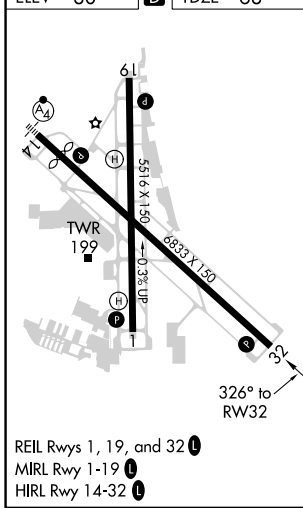
RNP APCH - GPS.		MISSED APPROACH: (Do not exceed 190K until WADIR) Climb to 2000 direct FAAYE then on track 019° to WADIR and on track 068° to PUGGS and hold.				
<p>▼ For uncompensated Baro-VNAV systems, LNAV/VNAV NA below -12°C or above 54°C.                  ▲ Rwy 32 helicopter visibility reduction below ¾ SM NA.</p>						

ATIS <b>126.65</b>	NEW YORK APP CON <b>128.125 269.0</b>	REPUBLIC TOWER ★ <b>118.8 (CTAF) 0 279.65</b>	GND CON <b>121.6 269.6</b>	CLNC DEL <b>128.25</b>	CLNC DEL <b>128.25</b> (When twr closed)	UNICOM <b>122.95</b>
-----------------------	--	--	-------------------------------	---------------------------	--	-------------------------



ELEV 80	<b>D</b>	TDZE 68
---------	----------	---------

2000	FAAYE	tr 019°	WADIR	tr 068°	PUGGS	VGSJ and RNAV glidepath not coincident (VGSJ Angle 3.00/TCH 53).
------	-------	---------	-------	---------	-------	--



CATEGORY	A	B	C	D
LPV DA		328-¾	260 (300-¾)	
LNAV/VNAV DA		355-7/8	287 (300-7/8)	
LNAV MDA	660-1	592 (600-1)	660-1¾	592 (600-1¾)
<b>C</b> CIRCLING	660-1 580 (600-1)	720-1 640 (700-1)	860-2¼ 780 (800-2¼)	1000-3 920 (1000-3)

NE-2, 23 MAR 2023 to 20 APR 2023

NE-2, 23 MAR 2023 to 20 APR 2023