

REDSTONE ARSENAL, ALABAMA

RNAV (GPS) RWY 35

WAAS CH 50238 W35A	APCH CRS 353°	Rwy ldg TDZE 661	7300 661 685
		Arprt Elev	685

AL-703 (USA)

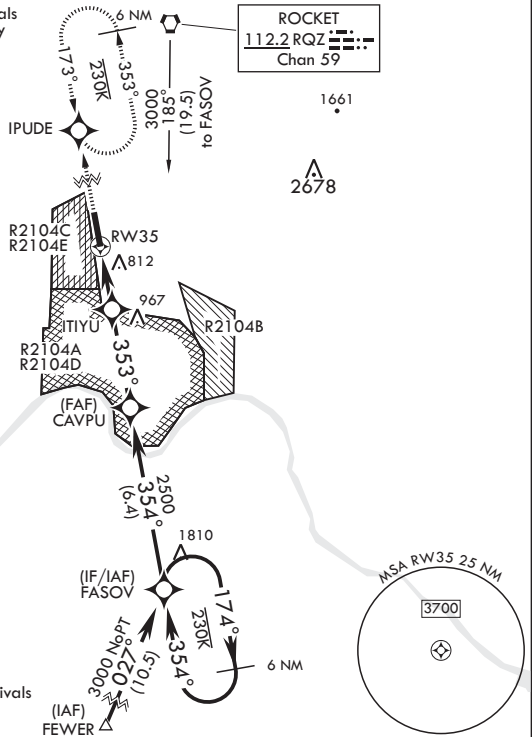
REDSTONE AAF (KHUA)

⚠ * Circling not authorized E of Rwy 17-35. MISSED APPROACH: Climb to 3000 direct IPUDE and hold.

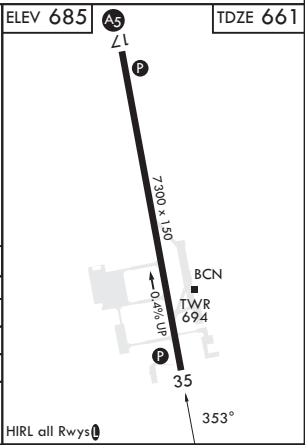
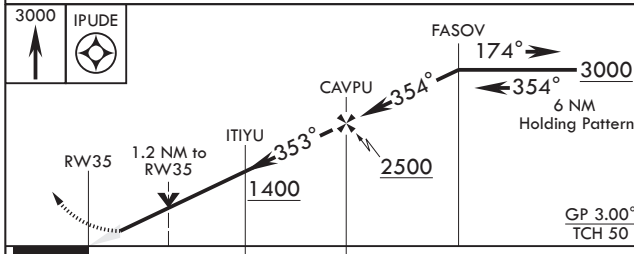
ATIS 120.65	HUNTSVILLE APP CON/DEP CON 125.6 354.1	TOWER* 126.95 (CTAF) 290.275	PAR
----------------	---	---------------------------------	-----

DME/DME RNP-0.3 NA
For uncompensated Baro-VNAV systems, LNAV/VNAV NA below -9°C (16°F) or above 54°C (130°F).
Inoperative table does not apply to LPV all CAT and LNAV CAT AB.

Procedure NA for arrivals at RQZ VORTAC airway R-147 CW R-261.



Procedure NA for arrivals at FEWER southeast bound on T429.



CATEGORY	A	B	C	D	E
LPV DA	920-1		259	(300-1)	
LNAV/VNAV DA	1140-1 $\frac{5}{8}$		479	(500-1 $\frac{5}{8}$)	
LNAV MDA	1320-1	659 (700-1)	1320-1 $\frac{5}{8}$	659	(700-1 $\frac{5}{8}$)
C CIRCLING*	1320-1	635 (700-1)	1480-2 $\frac{1}{4}$ 795 (800-2 $\frac{1}{4}$)	1740-3 1055 (1100-3)	

REDSTONE ARSENAL, ALABAMA 34°41'N - 86°41'W REDSTONE AAF (KHUA)

Amdt 1A 26JAN23

RNAV (GPS) RWY 35

SE-4, 23 MAR 2023 to 20 APR 2023

SE-4, 23 MAR 2023 to 20 APR 2023