

REDSTONE ARSENAL, ALABAMA

RNAV (GPS) RWY 17

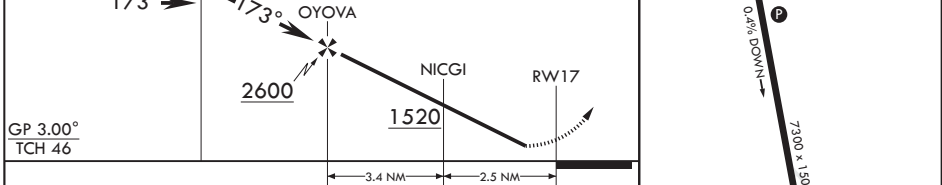
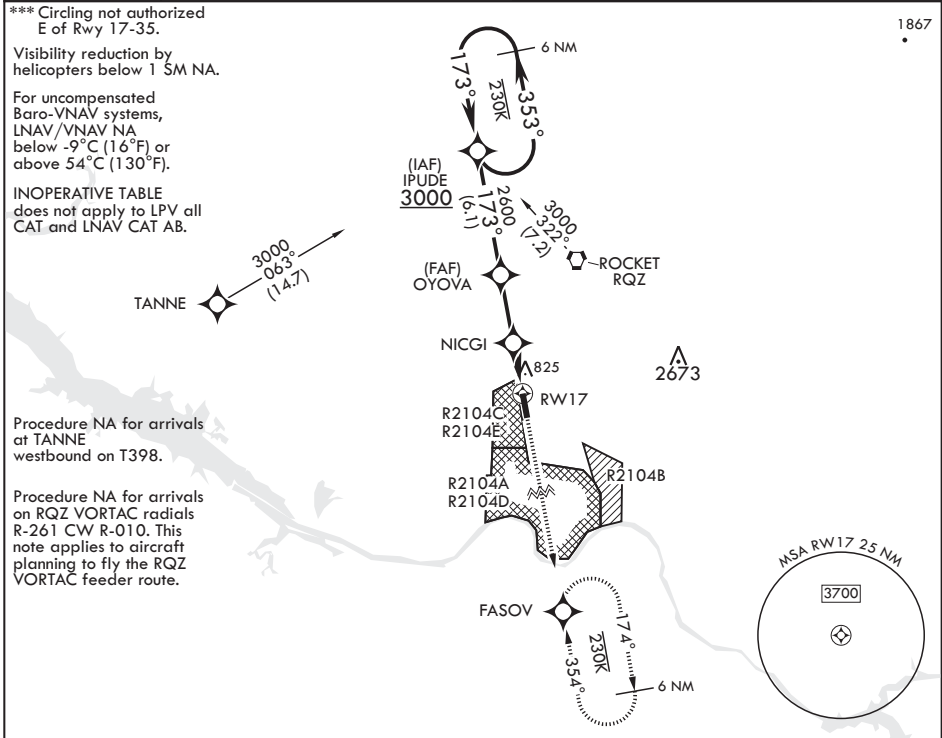
WAAS CH 45638 W17A	APCH CRS 173°	Rwy ldg TDZE Arprt Elev	7300 685 685
--------------------------	------------------	-------------------------------	--------------------

AL-703 (USA)

REDSTONE AAF (KHUA)

DME/DME RNP-0.3 NA	MALSR	MISSED APPROACH: Climb to 3000 direct FASOV and hold.
<p>⚠ * When ALS inop, increase CAT E vis to 1 1/2 miles.</p> <p>⚠ ** When ALS inop, increase CAT CDE vis to 1 3/8 miles.</p>	AS	

ATIS 120.65	HUNTSVILLE APP CON/DEP CON 125.6 354.1	TOWER* 126.95 (CTAF) 290.275	PAR
----------------	---	---------------------------------	-----



CATEGORY	A	B	C	D	E
LPV DA	935-1		250	(300-1)	
LNAV/VNAV DA*	1113-1		428	(500-1)	
LNAV MDA**	1180-1		495	(500-1)	
C CIRCLING***	1200-1 515 (600-1)	1240-1 555 (600-1)	1480-2¼ 795 (800-2¼)	1740-3 1055 (1100-3)	

REDSTONE ARSENAL, ALABAMA

34°41'N - 86°41'W

REDSTONE AAF (KHUA)

Amdt 1A 26JAN23

RNAV (GPS) RWY 17

SE-4, 23 MAR 2023, to 20 APR 2023

SE-4, 23 MAR 2023, to 20 APR 2023