

| | | | |
|--|------------------------|-----------------------------|---|
| WAAS CH 90201 W22A | APP CRS 226° | Rwy Idg TDZE Apt Elev | 6604 979 979 |
|--|------------------------|-----------------------------|---|

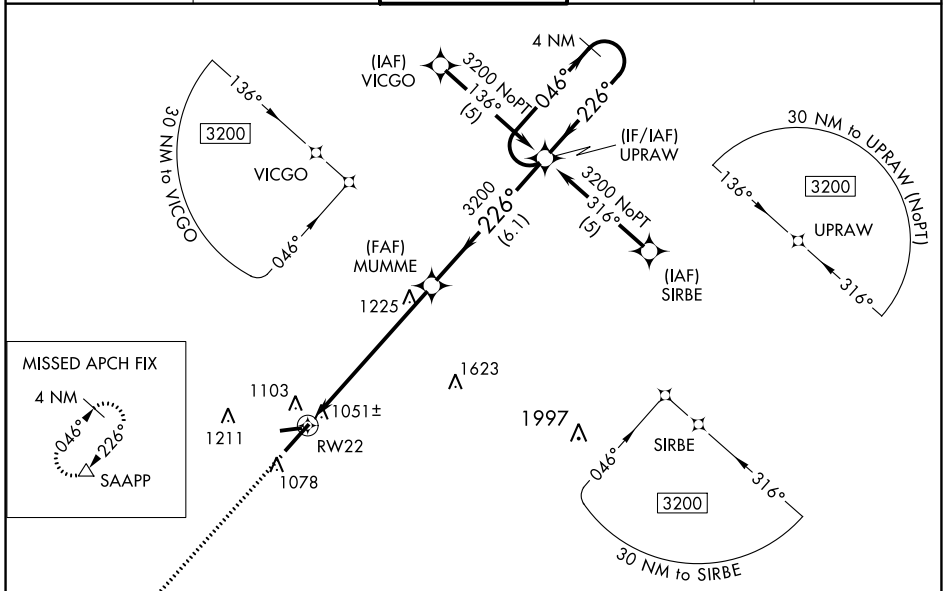
RNAV (GPS) RWY 22

BLUE GRASS (LEX)

⚠ For uncompensated Baro-VNAV systems, LNAV/VNAV NA below -16°C (4°F) or above 47°C (117°F). DME/DME RNP-0.3 NA. When local altimeter setting not received, use Frankfort altimeter setting; increase LPV DA to 1329 feet and all visibilities ¼ SM; increase LNAV/VNAV DA to 1434 feet and all visibilities ¼ SM; increase all MDAs 80 feet and visibility Cats C and D ¼ SM. Baro-VNAV and VDP NA when using Frankfort altimeter setting. Visibility reduction by helicopters NA.

⚠ MISSED APPROACH: Climb to 3200 direct SAAPP and hold.

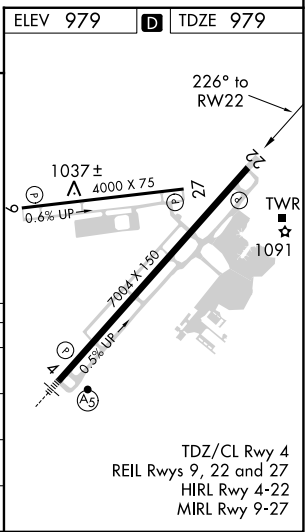
| | | | | |
|----------------------|--|--|-------------------------|---------------------------|
| ATIS 126.3 | LEXINGTON APP CON 120.15 259.3 | LEXINGTON TOWER 119.1 257.8 | GND CON 121.9 | CLNC DEL 132.35 |
|----------------------|--|--|-------------------------|---------------------------|



SE-1, 23 MAR 2023 to 20 APR 2023

SE-1, 23 MAR 2023 to 20 APR 2023

| 3200 | SAAPP | VGSI and RNAV glidepath not coincident (VGSI Angle 3.00/TCH 60). | | 4 NM Holding Pattern |
|-------------------|---------|--|-------------------------|-------------------------|
| *LNAV only. | | | | |
| | | | | |
| CATEGORY | A | B | C | D |
| LPV DA | 1267-1 | | 288 (300-1) | |
| LNAV/VNAV DA | 1372-1¼ | | 393 (400-1¼) | |
| LNAV MDA | 1520-1 | 541 (600-1) | 1520-1½ 541 (600-1½) | 1520-1¾ 541 (600-1¾) |
| C CIRCLING | 1520-1 | 541 (600-1) | 1520-1½ 541 (600-1½) | 1600-2 621 (700-2) |



TDZ/CL Rwy 4
REIL Rwys 9, 22 and 27
HIRL Rwy 4-22
MIRL Rwy 9-27