


LOC/DME I-MVY	APP CRS	Rwy Idg	5504
108.7	236°	TDZE	63
Chan 24		Apt Elev	67

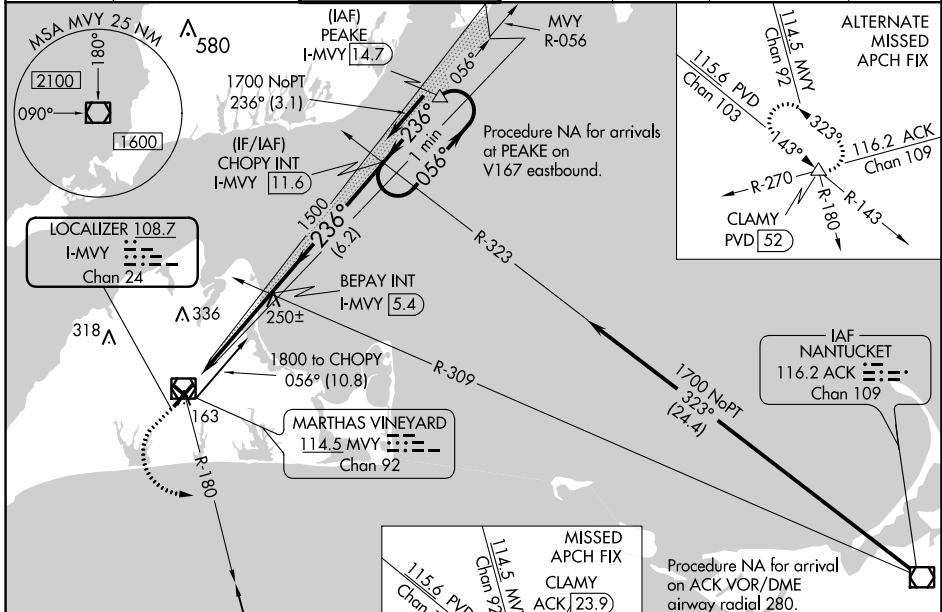
# ILS or LOC RWY 24


MARTHA'S VINEYARD (MVY)

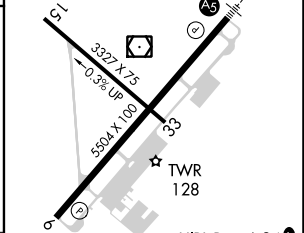
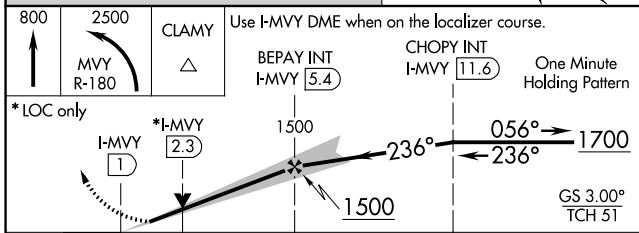
**⚠** VDP NA with Hyannis altimeter setting. When local altimeter setting not received, use Hyannis altimeter setting and increase all DA to 317 feet and all MDA 60 feet; increase S-LOC Cats C and D visibility to RVR 5000, Circling Cat C and D visibility 1/4 SM. For inoperative MALS R when using Hyannis altimeter setting, increase S-LOC Cats C and D visibility to 1 3/8 mile. Circling Rwy 15 NA at night. \*\* RVR 1800 authorized with use of FD or AP or HUD to DA (NA when using Hyannis altimeter setting).


**MALS R**  MISSED APPROACH: Climb to 800 then climbing left turn to 2500 on MVY VOR/DME R-180 to CLAMY INT/ACK 23.9 DME and hold.

ATIS	BOSTON APP CON *	VINEYARD TOWER *	GND CON	CLNC DEL	CLNC DEL	UNICOM
126.25	133.75	121.4 (CTAF) 	124.35	124.35	119.7 (When twr closed)	122.95





ELEV 67		TDZE 63
---------	--	---------




CATEGORY	A	B	C	D
S-ILS 24**	263/24 200 (200-1/2)			
S-LOC 24	500/24	437 (500-1/2)	500/40	437 (500-3/4)
 CIRCLING	500-1 433 (500-1)	540-1 473 (500-1)	700-1 3/4 633 (700-1 3/4)	780-2 1/4 713 (800-2 1/4)

FAF to MAP 4.4 NM					
Knots	60	90	120	150	180
Min:Sec	4:24	2:56	2:12	1:46	1:28

HIRL Rwy 6-24 

MIRL Rwy 15-33 

REIL Rwy 6

REIL Rwy 33 

NE-1, 23 MAR 2023 to 20 APR 2023

NE-1, 23 MAR 2023 to 20 APR 2023