

APP CRS	Rwy Idg	<b>7597</b>
<b>306°</b>	TDZE	<b>55</b>
	Apt Elev	<b>62</b>

# RNAV (RNP) Z RWY 30R

NORMAN Y MINETA SAN JOSE INTL (SJC)

RNP AR APCH.		MISSED APPROACH: Climb to 600 then climb to 2000 direct ARTAQ and hold.				
▼ For uncompensated Baro-VNAV systems, procedure NA below 1°C or above 54°C.						

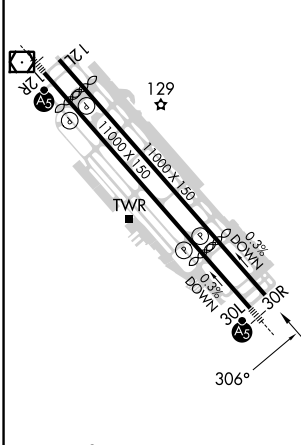
D-ATIS	NORCAL APP CON	SAN JOSE TOWER ★	GND CON	CLNC DEL	CPDLC	UNICOM
<b>126.95</b>	<b>120.1 290.25</b>	<b>124.0 (CTAF) 0 257.6</b>	<b>121.7</b>	<b>118.0</b>		<b>122.95</b>



SW-2, 23 MAR 2023 to 20 APR 2023

SW-2, 23 MAR 2023 to 20 APR 2023

ELEV 62	<b>D</b>	TDZE 55
---------	----------	---------



600	2000	ARTAQ	VGSI and RNAV glidepath not coincident (VGSI Angle 3.00/TCH 69).	TUZGY
↑	↑	✧		1600
See planview for multiple IF locations.				
RW30R				1600
4.7 NM				GP 3.00° TCH 55

CATEGORY	A	B	C	D
RNP 0.11 DA		377-1	322 (400-1)	
RNP 0.20 DA		472-1½	417 (500-1½)	
RNP 0.30 DA		538-1¾	483 (500-1¾)	

REIL Rwy 12L  
HIRL Rwy 12L-30R and 12R-30L

## AUTHORIZATION REQUIRED