

# RAZRR FIVE ARRIVAL (RNAV)

## Arrival Routes

SAN JOSE, CALIFORNIA

SW-2, 23 MAR 2023 to 20 APR 2023

### ARRIVAL ROUTE DESCRIPTION

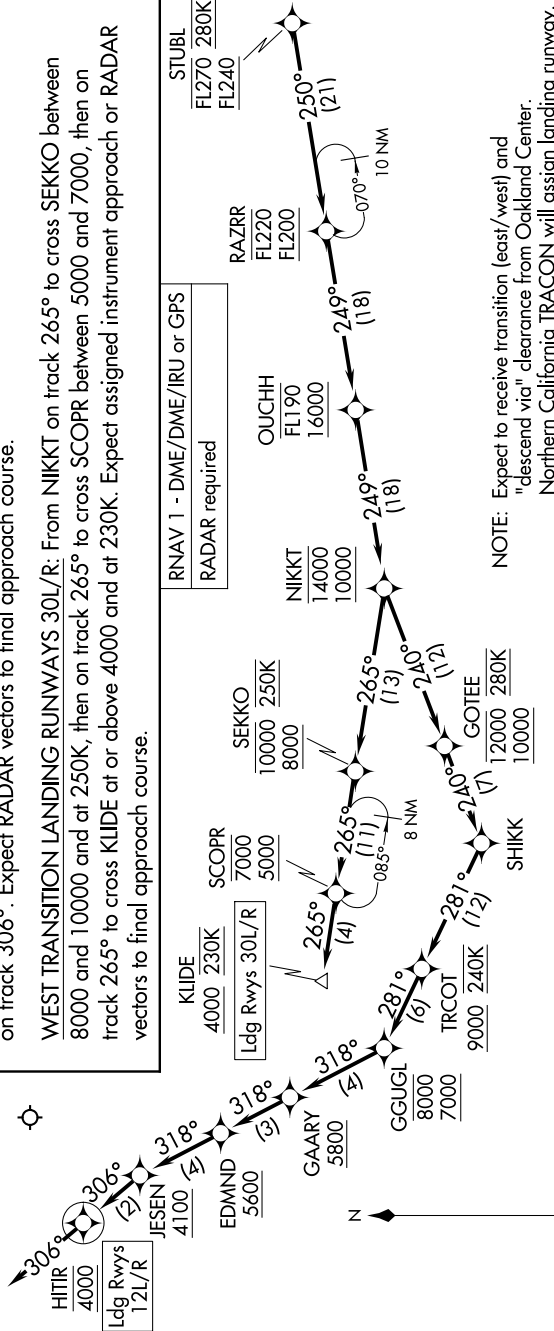
From STUBL on track 250° to cross RAZRR between FL200 and FL220, then on track 249° to cross OUCHH between 16000 and FL190, then on track 249° to cross NIKKT between 10000 and 14000.

**EAST TRANSITION LANDING RUNWAYS 12L/R:** From NIKKT on track 240° to cross GOTEE between 10000 and 12000 and at 280K, then on track 240° to SHIKK, then on track 281° to cross TRCOT at or above 9000 and at 240K, then on track 281° to cross GGUGL between 7000 and 8000, then on track 318° to cross GAARY at or above 5800, then on track 318° to cross EDMND at or above 5600, then on track 318° to cross JESEN at or above 4100, then on track 306° to cross HITIR at 4000, then on track 306°. Expect RADAR vectors to final approach course.

**WEST TRANSITION LANDING RUNWAYS 30L/R:** From NIKKT on track 265° to cross SEKKO between 8000 and 10000 and at 250K, then on track 265° to cross SCOPR between 5000 and 7000, then on track 265° to cross KLIDE at or above 4000 and at 230K. Expect assigned instrument approach or RADAR vectors to final approach course.

RNAV 1 - DME/DME/IRU or GPS  
RADAR required

OAKLAND CENTER  
121.25 327.0  
NORCAL APP CON  
126.475 317.775  
D-AITIS  
126.95  
SAN JOSE TOWER\*  
124.0 257.6  
GND CON  
121.7



NOTE: Expect to receive transition (east/west) and "descend via" clearance from Oakland Center.  
Northern California TRACON will assign landing runway.

NOTE: West transition indicates Rwy's 30L/R.

NOTE: East transition indicates Rwy's 12L/R.

NOTE: Expect west transition unless otherwise advised.

# RAZRR FIVE ARRIVAL (RNAV)

## Arrival Routes

SAN JOSE, CALIFORNIA

NOTE: Chart not to scale.

SW-2, 23 MAR 2023 to 20 APR 2023