

LOC/DME I-SLV 110.9 Chan 46	APP CRS 126°	Rwy Idg TDZE Apt Elev	12R 8587	12L 8831
---	------------------------	-----------------------------	--------------------	--------------------

ILS or LOC RWY 12R

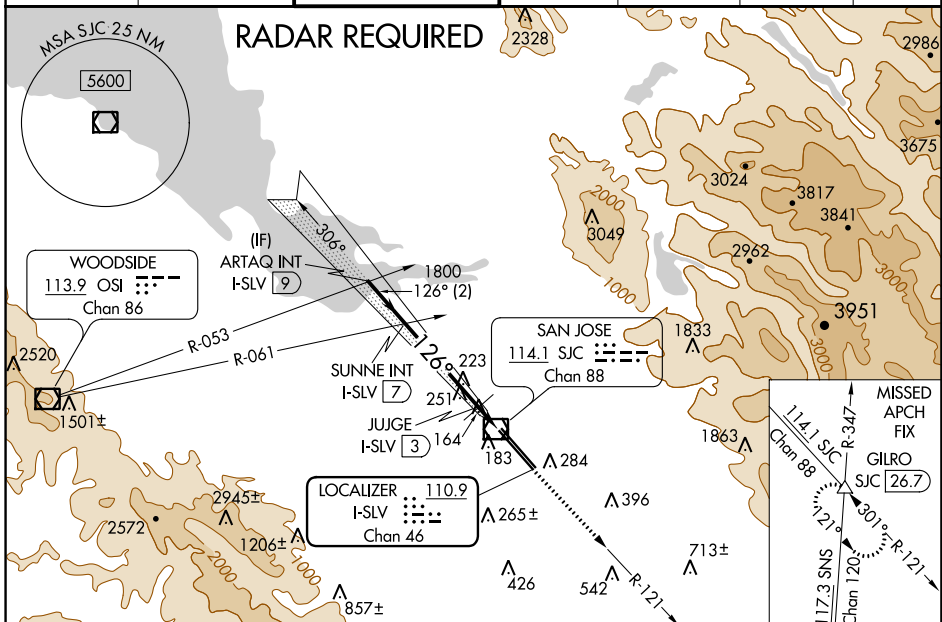
NORMAN Y MINETA SAN JOSE INTL (SJC)

⚠ DME required.
For inoperative MALS, increase S-LOC 12R
Cat C/D visibility to 1 mile.



MISSED APPROACH: Climb to 500 then climb to 4000
on SJC VOR/DME R-121 to GILRO/SJC 26.7 DME
and hold.

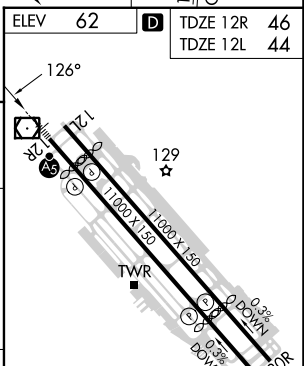
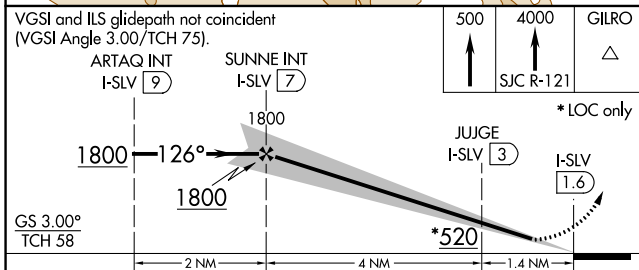
D-ATIS 126.95	NORCAL APP CON 120.1 290.25	SAN JOSE TOWER* 124.0 (CTAF) 0 257.6	GND CON 121.7	CLNC DEL 118.0	CPDLC	UNICOM 122.95
-------------------------	---------------------------------------	---	-------------------------	--------------------------	-------	-------------------------



SW-2, 23 MAR 2023 to 20 APR 2023

SW-2, 23 MAR 2023 to 20 APR 2023

ELEV 62	D	TDZE 12R 46	TDZE 12L 44
---------	----------	-------------	-------------



CATEGORY	A	B	C	D
S-ILS 12R	251-1/2		205 (200-1/2)	
S-LOC 12R	420-1/2 374 (400-1/2)		420-5/8 374 (400-5/8)	
SIDESTEP RWY 12L	600-1 556 (600-1)		600-2 556 (600-2)	

REIL Rwy 12L
HIRL Rwy 12L-30R and 12R-30L