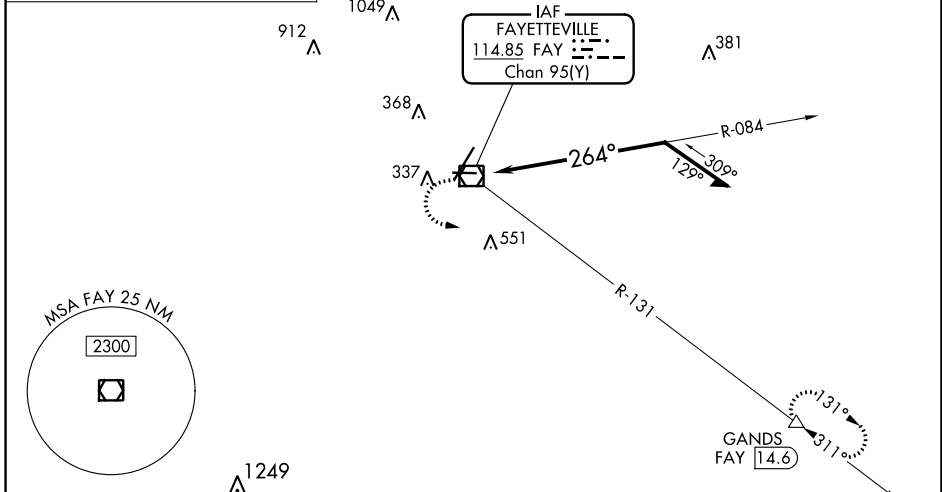
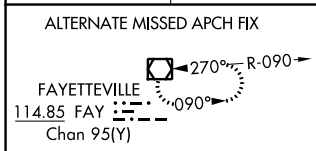


VOR/DME FAY 114.85 Chan 95(Y)	APP CRS 264°	Rwy Idg TDZE Apt Elev	4801 188 189
----------------------------------------------------------	------------------------	-----------------------------	-----------------------------------------

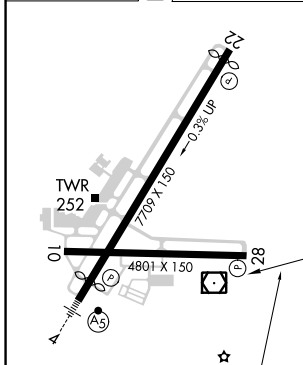
VOR RWY 28

FAYETTEVILLE RGNL/GRANNIS FLD (FAY)

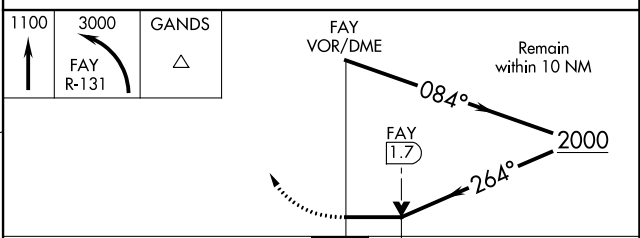
DME required.		MISSED APPROACH: Climb to 1100 then climbing left turn to 3000 on FAY VOR/DME R-131 to GANDS/FAY 14.6 DME and hold.	
ATIS 121.25	FAYETTEVILLE APP CON 133.0 290.25	FAYETTEVILLE TOWER 118.3 269.2	GND CON 121.7 348.6



ELEV 189	D	TDZE 188
----------	----------	----------



HIRL Rwy 4-22
MIRL Rwy 10-28
REIL Rwy 10, 22 and 28



CATEGORY	A	B	C	D
S-28	700-1	512 (600-1)	700-1 $\frac{3}{8}$	512 (600-1 $\frac{3}{8}$)
C CIRCLING	700-1	511 (600-1)	860-2 671 (700-2)	860-2 $\frac{1}{4}$ 671 (700-2 $\frac{1}{4}$)

SE-2, 23 MAR 2023 to 20 APR 2023

SE-2, 23 MAR 2023 to 20 APR 2023