

(MTY5.MTY) 22363

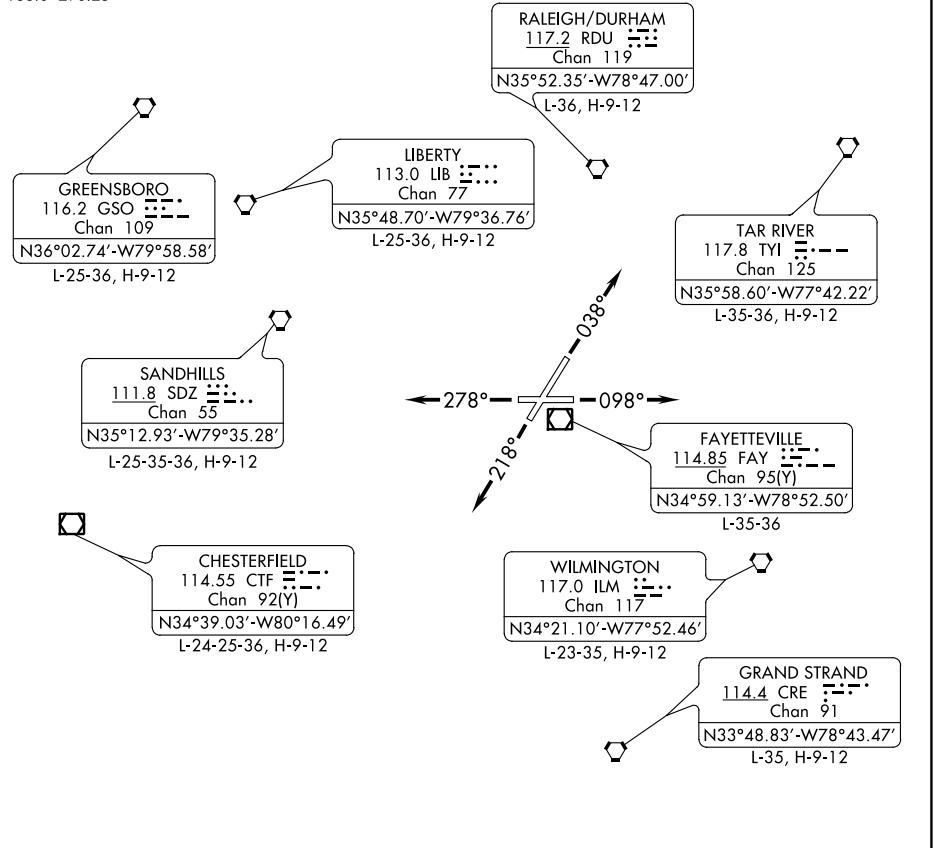
# MOUNTY FIVE DEPARTURE

FAYETTEVILLE RGNL/GRANNIS FLD (FAY)  
AL-690 (FAA) FAYETTEVILLE, NORTH CAROLINA

ATIS  
121.25  
GND CON  
121.7 348.6  
FAYETTEVILLE TOWER  
118.3 269.2  
FAYETTEVILLE DEP CON  
133.0 290.25

RADAR required.

**TOP ALTITUDE:  
2000**



SE-2, 23 MAR 2023 to 20 APR 2023

SE-2, 23 MAR 2023 to 20 APR 2023

**TAKEOFF MINIMUMS:**  
Rwys 4, 10, 22, 28: Standard.

NOTE: Chart not to scale.



## DEPARTURE ROUTE DESCRIPTION

TAKEOFF RUNWAY 4: Climb heading 038° or as assigned, thence. . . .

TAKEOFF RUNWAY 10: Climb heading 098° or as assigned, thence. . . .

TAKEOFF RUNWAY 22: Climb heading 218° or as assigned, thence. . . .

TAKEOFF RUNWAY 28: Climb heading 278° or as assigned, thence. . . .

. . . .maintain 2000 or assigned altitude. Expect vectors to join filed route.  
Expect further clearance to filed altitude 10 minutes after departure.

# MOUNTY FIVE DEPARTURE

(MTY5.MTY) 19MAY22

FAYETTEVILLE, NORTH CAROLINA  
FAYETTEVILLE RGNL/GRANNIS FLD (FAY)