

WAAS CH 81938 W32A	APP CRS 326°	Rwy Idg TDZE Apt Elev	6329 2591 2596
--	------------------------	-----------------------------	---

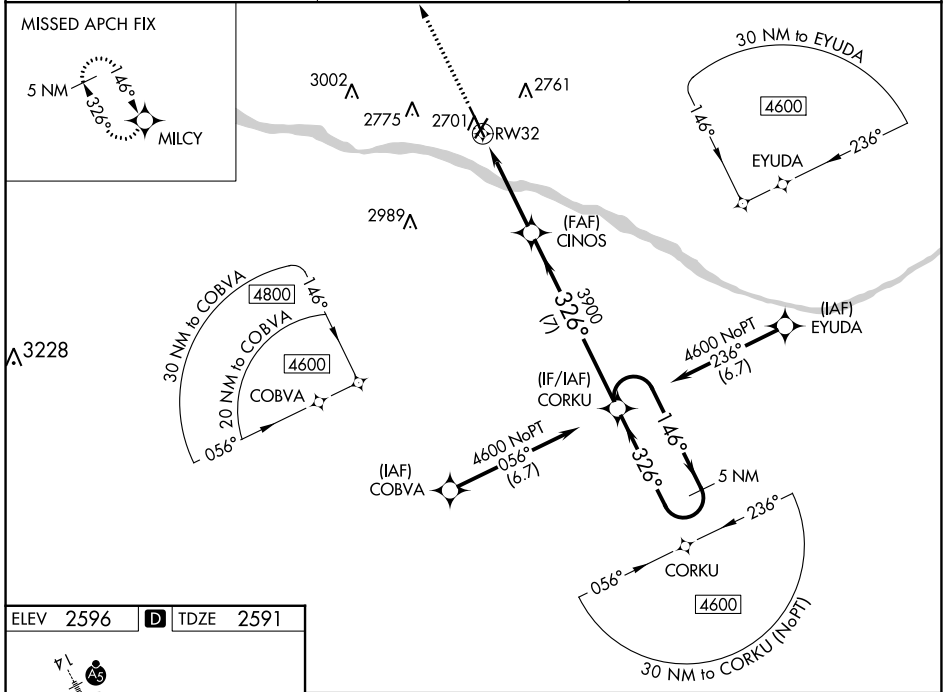
RNAV (GPS) RWY 32

DODGE CITY RGNL (DDC)

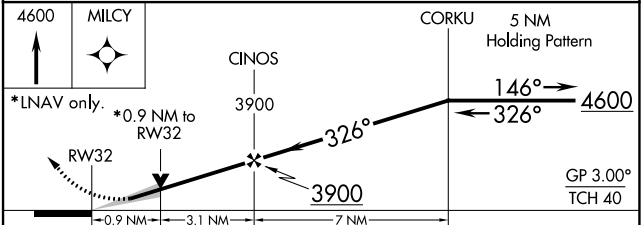
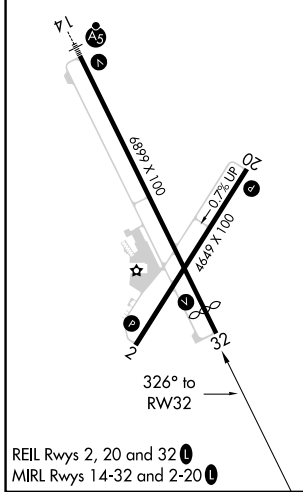
⚠ DME/DME RNP-0.3 NA. Baro-VNAV and VDP NA when using Garden City altimeter setting. For uncompensated Baro-VNAV systems, LNAV/VNAV NA below -19°C (-2°F) or above 54°C (130°F). When local altimeter setting not received, use Garden City altimeter setting: increase LPV DA to 2919 feet and all visibilities $\frac{3}{8}$ miles, LNAV/VNAV DA to 2969 feet and all visibilities $\frac{3}{8}$ mile; increase all MDA 140 feet and LNAV visibility Cat C and D $\frac{3}{8}$ mile and Circling visibility Cat C and D $\frac{1}{2}$ mile.

MISSED APPROACH:
Climb to 4600 direct MILCY and hold.

ASOS 118.525	KANSAS CITY CENTER 125.2 269.4	UNICOM 122.7 (CTAF) 0
------------------------	--	---------------------------------



ELEV 2596	D TDZE 2591
------------------	---------------------------



CATEGORY	A	B	C	D
LPV DA		2791- $\frac{3}{4}$	200 (200- $\frac{3}{4}$)	
LNAV/VNAV DA		2841- $\frac{7}{8}$	250 (300- $\frac{7}{8}$)	
LNAV MDA		2920-1	329 (400-1)	
C CIRCLING	3040-1 444 (500-1)	3080-1 484 (500-1)	3320-2 724 (800-2)	3320-2 $\frac{1}{4}$ 724 (800-2 $\frac{1}{4}$)

NC-2, 23 MAR 2023 to 20 APR 2023

NC-2, 23 MAR 2023 to 20 APR 2023