

WAAS CH <b>78440</b> <b>W20A</b>	APP CRS <b>204°</b>	Rwy Idg TDZE Apt Elev	<b>4649</b> <b>2592</b> <b>2596</b>
--	------------------------	-----------------------------	---

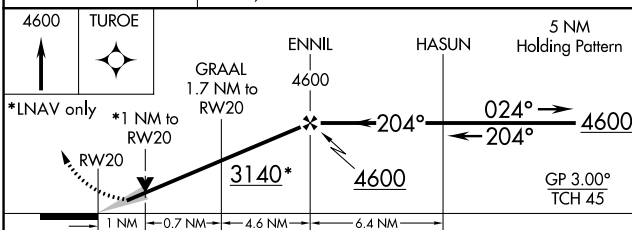
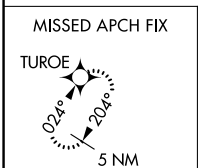
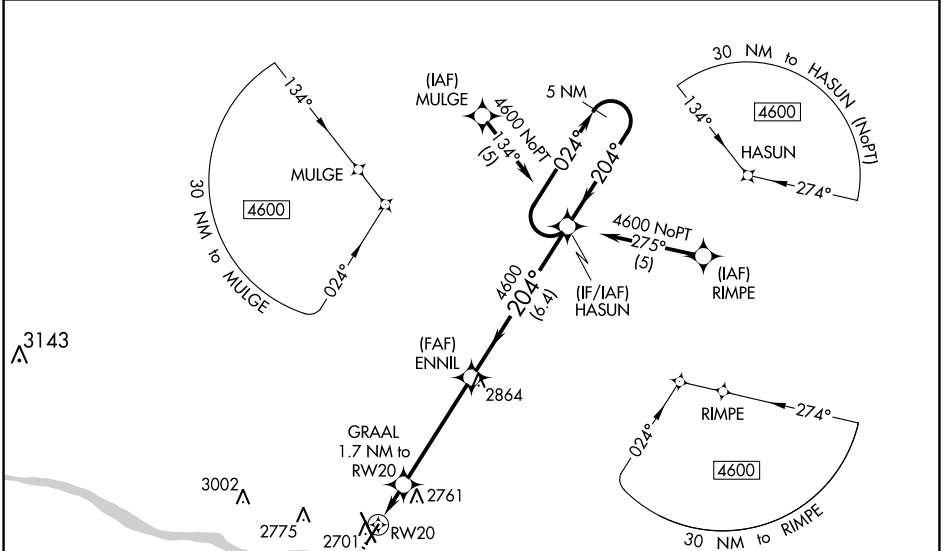
# RNAV (GPS) RWY 20

DODGE CITY RGNL (DDC)

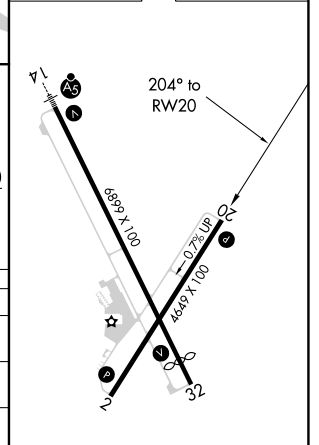
For uncompensated Baro-VNAV systems, LNAV/VNAV NA below -9°C (16°F) or above 54°C (130°F). DME/DME RNP-0.3 NA.

MISSED APPROACH: Climb to 4600 direct TUROE and hold.

ASOS <b>118.525</b>	KANSAS CITY CENTER <b>125.2 269.4</b>	UNICOM <b>122.7 (CTAF) 0</b>
------------------------	--	---------------------------------



ELEV 2596	<b>D</b> TDZE 2592
-----------	--------------------



CATEGORY	A	B	C	D
LPV DA	2842-7/8	250 (300-7/8)		NA
LNAV/VNAV DA	2842-7/8	250 (300-7/8)		NA
LNAV MDA	2920-1	328 (400-1)		NA
<b>C</b> CIRCLING	3040-1 444 (500-1)	3080-1 484 (500-1)	3320-2 724 (800-2)	NA

REIL Rwy 2, 20 and 32 **0**  
MIRL Rwy 14-32 and 2-20 **0**

NC-2, 23 MAR 2023 to 20 APR 2023

NC-2, 23 MAR 2023 to 20 APR 2023