

WAAS CH 73040 W02A	APP CRS 024°	Rwy Idg TDZE 4649 2596 Apt Elev 2596
--	------------------------	--

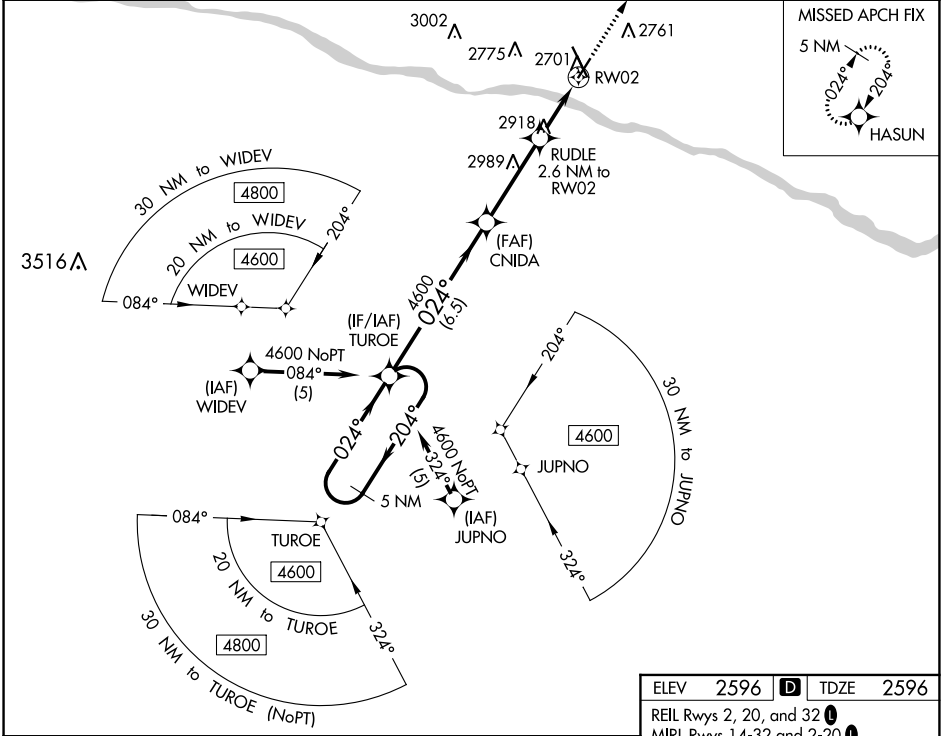
RNAV (GPS) RWY 2

DODGE CITY RGNL (DDC)

For uncompensated Baro-VNAV systems, LNAV/VNAV NA below -9°C (16°F) or above 54°C (130°F). Rwy 2 helicopter visibility reduction below ¾ SM NA. DME/DME RNP-0.3 NA.

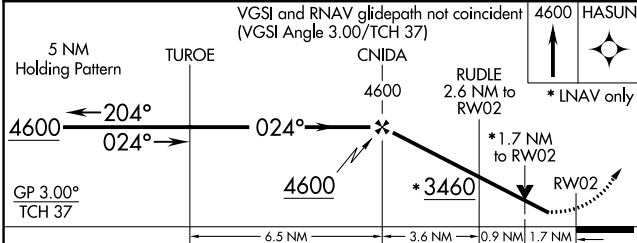
MISSED APPROACH: Climb to 4600 direct HASUN and hold.

ASOS 118.525	KANSAS CITY CENTER 125.2 269.4	UNICOM 122.7 (CTAF) 0
------------------------	--	--



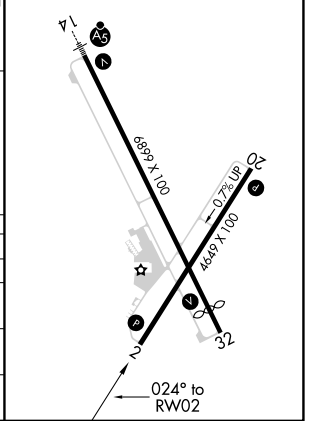
NC-2, 23 MAR 2023 to 20 APR 2023

NC-2, 23 MAR 2023 to 20 APR 2023



ELEV	2596	D	TDZE	2596
------	------	---	------	------

REIL Rwy 2, 20, and 32 **0**
MIRL Rwy 14-32 and 2-20 **0**



CATEGORY	A	B	C	D
LPV DA	2846-7/8		250 (300-7/8)	NA
LNAV/VNAV DA	2883-1		287 (300-1)	NA
LNAV MDA	3180-1	584 (600-1)	3180-1¾ 584 (600-1¾)	NA
C CIRCLING	3180-1	584 (600-1)	3320-2 724 (800-2)	NA