

ATLANTIC CITY, NEW JERSEY

HI-ILS or LOC RWY 13

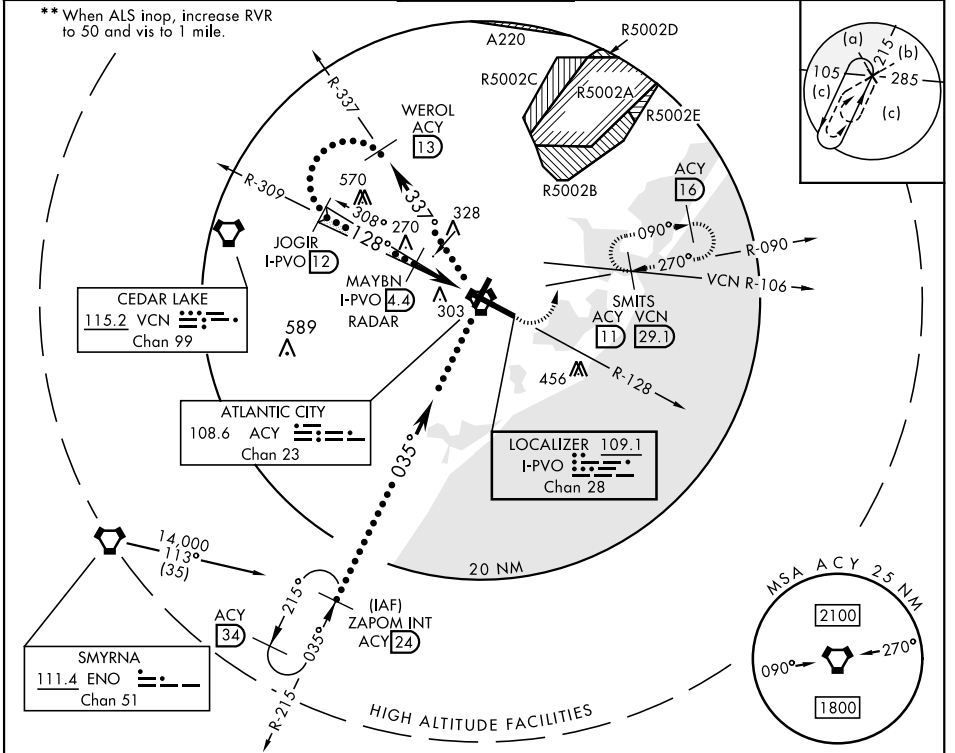
LOC/DME I-PVO 109.1 Chan 28	APCH CRS 128°	Rwy Idg TDZE Arprt Elev 10,000 75 75
---	-------------------------	--

AL-669 [USAF]

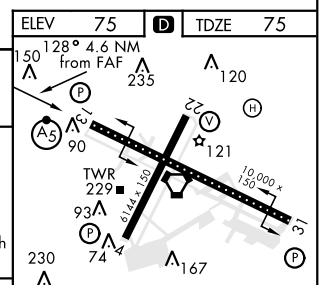
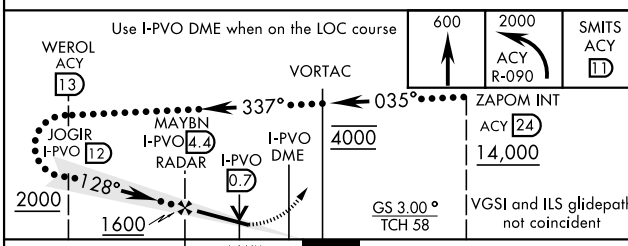
ATLANTIC CITY INTL (KACY)

DME or RADAR required.	MALSR 	MISSED APPROACH: Climb to 600 then climbing left turn to 2000 via ACY R-090 to SMITS INT/ACY 11 DME and hold; or when directed by ATC, climb to 600 then climbing left turn to 2000 via heading 076° and VCN R-106 to SMITS INT/VCN 29.1 DME and hold E, RT, hdg 286° inbound.
------------------------	-----------	--

ATIS 125.725 316.15	APP CON 124.6 327.125 134.25 292.2	130° - 309° 310° - 129°	TOWER 120.3 239.0	GND CON 121.9 284.6	CLNC DEL 127.85 353.775	ASR
-------------------------------	--	----------------------------	-----------------------------	-------------------------------	-----------------------------------	-----



EMERG SAFE ALT 100 NM 4200



CATEGORY	C	D	E
S-ILS 13 *	275/18 200	(200-½)	275/24 200 (200-½)
S-LOC 13 **	420/24 345 (400-½)	420/40 345	(400-¾)
CIRCLING	540-1½ 465 (500-1½)	640-2 565 (600-2)	760-2½ 685 (700-2½)

FAF to MAP 4.6 NM					
Knots	120	140	160	180	200
Min:Sec	2:18	1:58	1:43	1:32	1:23

ATLANTIC CITY, NEW JERSEY
Amdt 4C 04FEB16

39°27'N-74°35'W

ATLANTIC CITY INTL (KACY)

HI-ILS or LOC RWY 13

NE-2, 23 MAR 2023 to 20 APR 2023

NE-2, 23 MAR 2023 to 20 APR 2023