

WAAS CH <b>69213</b> <b>W22A</b>	APP CRS <b>224°</b>	Rwy Idg <b>7502</b> TDZE <b>933</b> Apt Elev <b>962</b>
--	------------------------	---

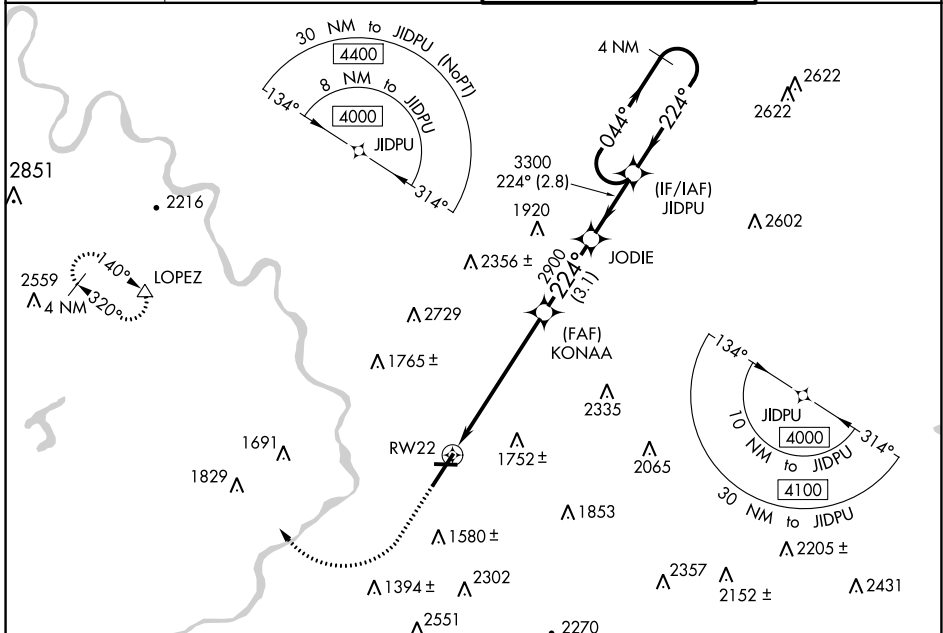
# RNAV (GPS) RWY 22

WILKES-BARRE/SCRANTON INTL (AVP)

**⚠** Night landing: Rwy 10, 28 NA. For uncompensated Baro-VNAV systems, LNAV/VNAV NA below -17°C (2°F) or above 54°C (130°F). When local altimeter setting not received, procedure NA. Circling NA for Cats C and D southeast of Rwy 4-22. DME/DME RNP-0.3 NA.

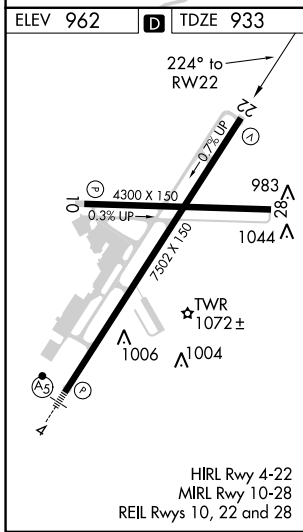
**⚠** MISSED APPROACH: Climb to 1900 then climbing right turn to 4000 direct LOPEZ and hold.

ATIS <b>111.6</b>	WILKES-BARRE APP CON <b>120.95 256.7</b> (280°-100°) <b>126.3 256.7</b> (101°-279°)	WILKES-BARRE TOWER <b>120.1 257.8</b>	GND CON <b>121.9</b>
----------------------	---	--	-------------------------



NE-4, 23 MAR 2023 to 20 APR 2023

NE-4, 23 MAR 2023 to 20 APR 2023



ELEV 962	<b>D</b>	TDZE 933		
1900	4000	LOPEZ	VGSI and RNAV glidepath not coincident (VGSI Angle 3.00/TCH 54).	4 NM Holding Pattern
*LNAV only.		*1.8 NM to RW22		
RW22		KONAA 2900	JODIE 2900	JIDPU 4000
1.8 NM		4.3 NM	3.1 NM	2.8 NM
CATEGORY	A	B	C	D
LPV DA		1178/40	245 (200-¾)	
LNAV/VNAV DA		1392-1½	459 (500-1½)	
LNAV MDA	1500/55	567 (600-1)	1500-¾	567 (600-1¾)
<b>C</b> CIRCLING	1840-1¼ 878 (900-1¼)	1980-1½ 1018 (1100-1½)	1980-3 1018 (1100-3)	2280-3 1318 (1400-3)