

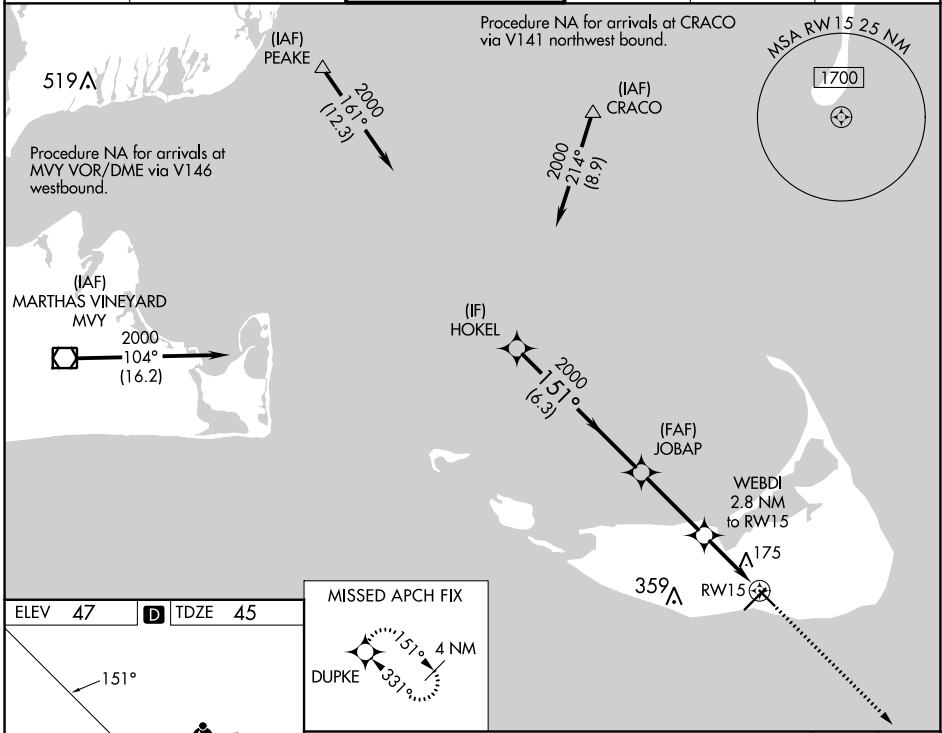
WAAS CH 97623 W15A	APP CRS 151°	Rwy Idg 4500 TDZE 45 Apt Elev 47
--	------------------------	---

RNAV (GPS) RWY 15

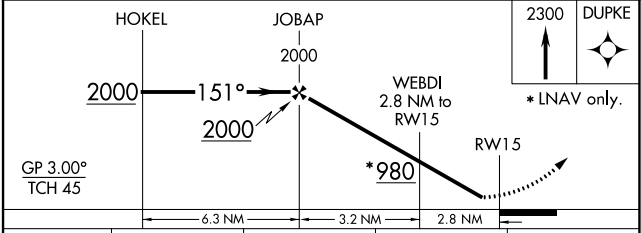
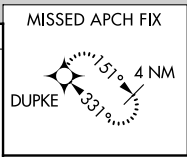
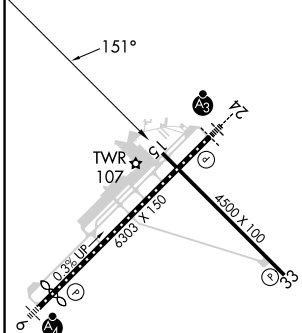
NANTUCKET MEML (ACK)

RNP APCH.		<p>Baro-VNAV NA when using Hyannis altimeter setting. For uncompensated Baro-VNAV systems, LNAV/VNAV NA below -15°C or above 43°C. Rwy 15 helicopter visibility reduction below 3/4 SM NA. When local altimeter setting not received, use Hyannis altimeter setting and increase LPV DA to 358, LNAV/VNAV DA to 543, and all MDA 80 feet; increase LNAV/VNAV all Cats and LNAV Cats C and D visibility 1/4 mile.</p>		<p>MISSED APPROACH: Climb to 2300 direct DUPKE and hold.</p>	
-----------	--	--	--	--	--

ATIS 127.5	BOSTON APP CON * 126.1 318.1	NANTUCKET TOWER * 118.3 (CTAF) 0	GND CON 132.5	CLNC DEL 119.375	UNICOM 122.95
----------------------	--	---	-------------------------	----------------------------	-------------------------



ELEV 47	D	TDZE 45
---------	----------	---------



CATEGORY	A	B	C	D
LPV DA	295-1 250 (300-1)			
LNAV/VNAV DA	480-1½ 435 (500-1½)			
LNAV MDA	440-1 395 (400-1)		440-1½ 395 (400-1½)	

TDZ/CL Rwy 24
REIL Rws 15 and 33
MIRL Rwy 15-33 **0**
HIRL Rwy 6-24 **0**

NE-1, 23 MAR 2023 to 20 APR 2023

NE-1, 23 MAR 2023 to 20 APR 2023