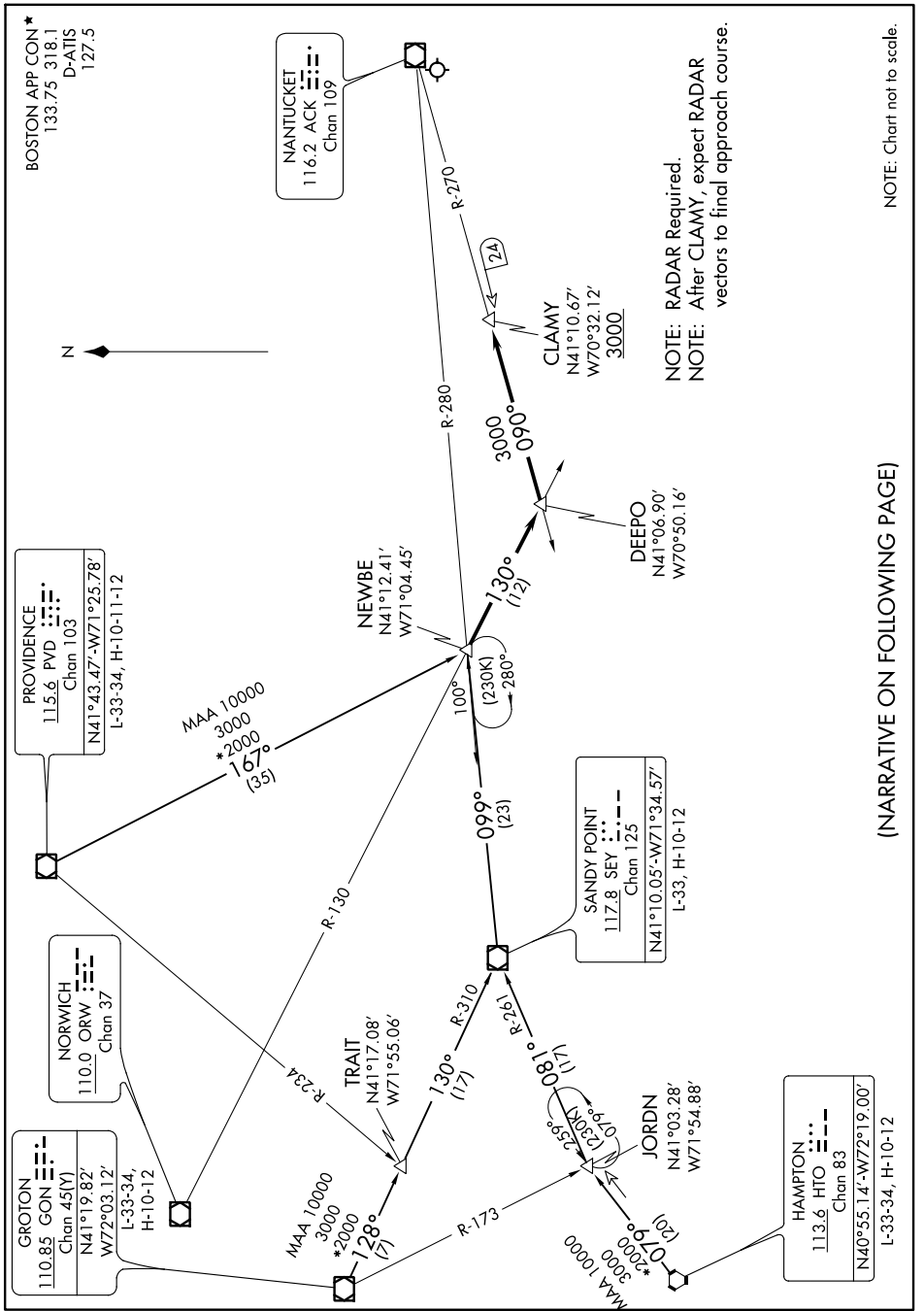


# NEWBE THREE ARRIVAL

AL-659 (FAA)

NANTUCKET MEML (ACK)  
NANTUCKET, MASSACHUSETTS

NE-1, 23 MAR 2023 to 20 APR 2023



NOTE: Chart not to scale.

(NARRATIVE ON FOLLOWING PAGE)

NE-1, 23 MAR 2023 to 20 APR 2023

# NEWBE THREE ARRIVAL

NANTUCKET, MASSACHUSETTS  
NANTUCKET MEML (ACK)