

WAAS CH <b>77813</b> <b>W32A</b>	APP CRS <b>321°</b>	Rwy Idg <b>6513</b> TDZE <b>712</b> Apt Elev <b>721</b>
--	------------------------	---

# RNAV (GPS) RWY 32

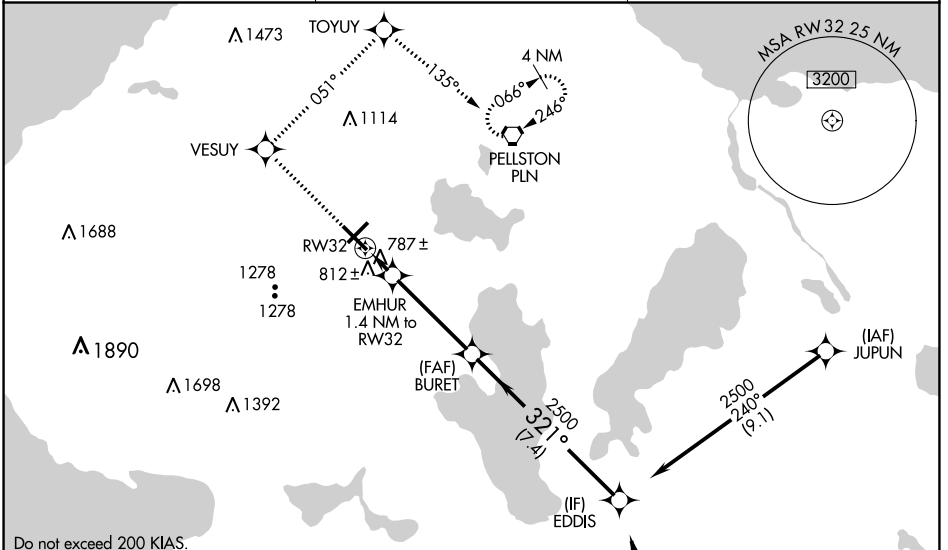
PELLSTON RGNL/EMMET COUNTY (PLN)

**⚠** Baro-VNAV NA when using Harbor Springs altimeter setting. For uncompensated Baro-VNAV systems, LNAV/VNAV NA below -16°C (4°F) or above 47°C (116°F). DME/DME RNP-0.3 NA. When local altimeter setting not received, use Harbor Springs altimeter setting and increase LPV DA to 942 feet, LNAV/VNAV DA to 1086 feet, and all MDA 40 feet. Circling Rwy 5, 14, 23 NA at night. For inop MALSRS when using Harbor Springs altimeter setting, increase LNAV visibility Cats C/D to 1 ½ mile.

**MALSRS**

**MISSED APPROACH:**  
Climb to 2600 direct VESUY and via track 051° to TOYUY and via track 135° to PLN VORTAC and hold.

ASOS <b>119.025</b>	MINNEAPOLIS CENTER <b>134.6 354.05</b>	UNICOM <b>123.0 (CTAF) 0</b>
------------------------	---	---------------------------------



Do not exceed 200 KIAS.

ELEV 721	<b>D</b>	TDZE 712
----------	----------	----------

HIRL Rwy 14-32  
MIRL Rwy 5-23  
REIL Rwy 5, 14, and 23

321° to RWY 32

Procedure NA for arrivals at RONDO via V609 southbound.

2600	VESUY	tr 051°	TOYUY	tr 135°	PLN	Procedure Turn NA
------	-------	---------	-------	---------	-----	-------------------

\* LNAV only.

BURET 2500  
EMHUR 1.4 NM to RWY 32  
EDDIS 2500

GP 3.00° TCH 54

CATEGORY	A	B	C	D
LPV DA		912-½	200 (200-½)	
LNAV/VNAV DA		1056-⅝	344 (400-⅝)	
LNAV MDA	1080-½	368 (400-½)	1080-⅝	368 (400-⅝)
CIRCLING	1280-1 559 (600-1)	1320-1 599 (600-1)	1560-2½ 839 (900-2½)	1660-3 939 (1000-3)

EC-1, 23 MAR 2023 to 20 APR 2023

EC-1, 23 MAR 2023 to 20 APR 2023