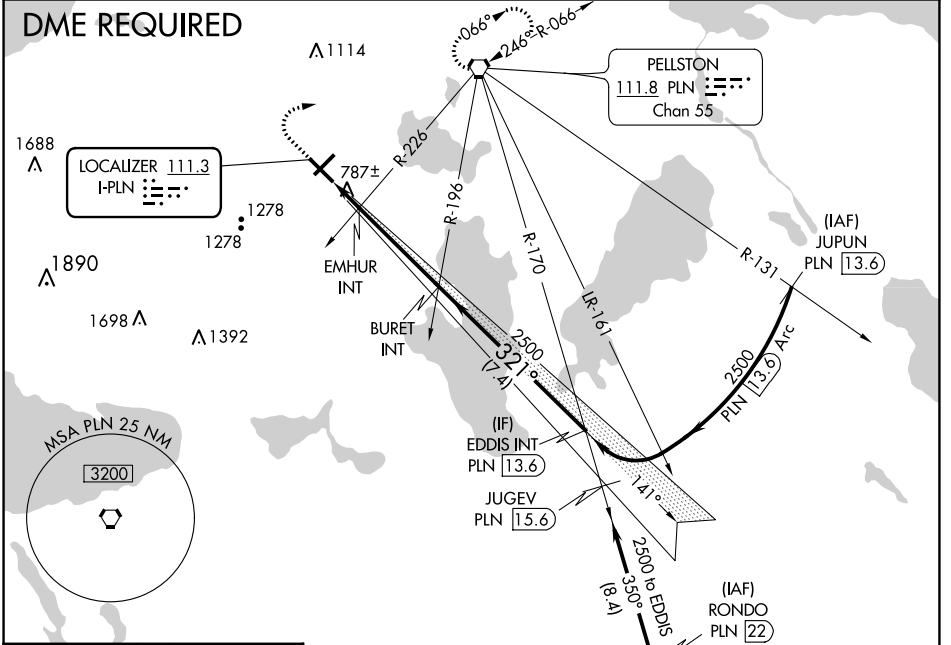


LOC I-PLN 111.3	APP CRS 321°	Rwy Idg 6513
		TDZE 712
		Apt Elev 721

ILS or LOC RWY 32
PELLSTON RGNL/EMMET COUNTY (PLN)

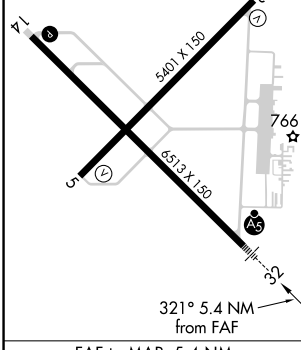
<p>When local altimeter setting not received, use Harbor Springs altimeter setting: increase S-ILS 32 DA to 942 feet; increase all MDA 40 feet and visibility S-LOC 32 Cat D and EMHUR fix minimums S-LOC 32 Cat C ¼ SM. Circling Rwy 5, 14, 23 NA at night. Autopilot coupled approach NA below 1868 feet.</p>	<p>MALSR</p>	<p>MISSED APPROACH: Climb to 1400 then climbing right turn to 2600 direct PLN VORTAC and hold.</p>
	<p>ASOS 119.025</p>	

MINNEAPOLIS CENTER 134.6 354.05	UNICOM 123.0 (CTAF) 0
---	---------------------------------

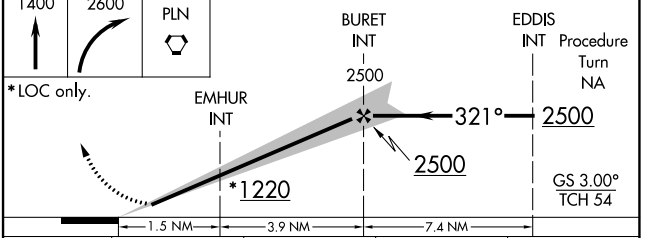


ELEV 721	D TDZE 712
----------	------------

HIRL Rwy 14-32
MIRL Rwy 5-23
REIL Rws 5, 14, and 23



Knots	60	90	120	150	180
Min:Sec	5:24	3:36	2:42	2:10	1:48



CATEGORY	A	B	C	D
S-ILS 32		912-½	200 (200-½)	
S-LOC 32	1220-½	508 (500-½)	1220-1	508 (500-1)
CIRCLING	1280-1 559 (600-1)	1320-1 599 (600-1)	1560-2½ 839 (900-2½)	1660-3 939 (1000-3)
EMHUR FIX MINIMUMS (DUAL VOR RECEIVERS REQUIRED)				
S-LOC 32	1080-½	368 (400-½)		1080-¾ 368 (400-¾)
CIRCLING	1280-1 559 (600-1)	1320-1 599 (600-1)	1560-2½ 839 (900-2½)	1660-3 939 (1000-3)

EC-1, 23 MAR 2023 to 20 APR 2023

EC-1, 23 MAR 2023 to 20 APR 2023