

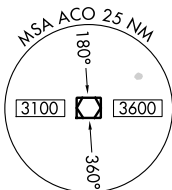
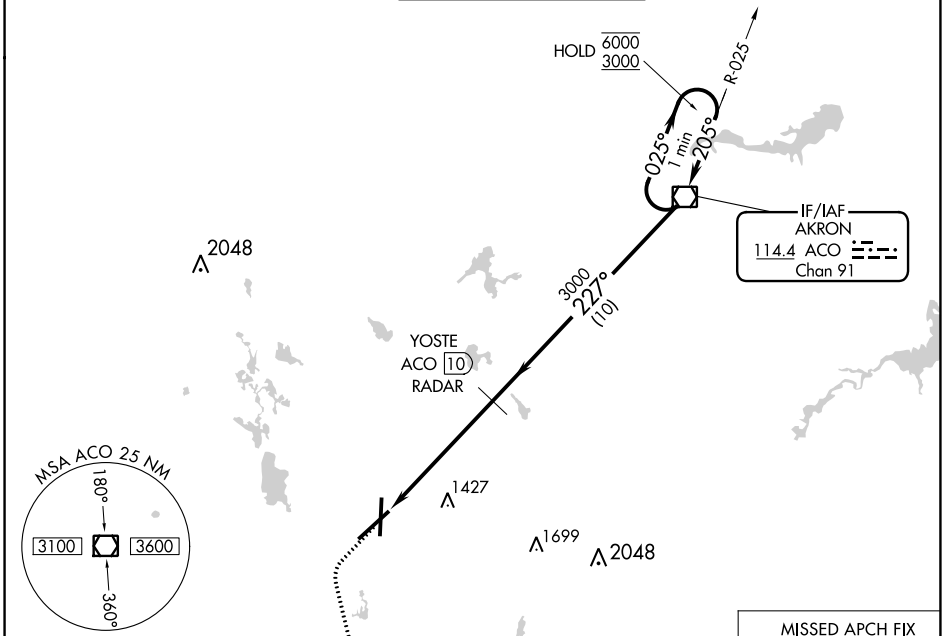
VOR/DME ACO 114.4 Chan 91	APP CRS 227°	Rwy Idg TDZE 1226 Apt Elev 1226	8204
---	------------------------	---	-------------

VOR RWY 23

AKRON-CANTON RGNL (CAK)

DME or RADAR required.		MALSR 	MISSED APPROACH: Climb to 3000 then left turn direct BSV VOR/DME and hold.	
------------------------	--	-----------	--	--

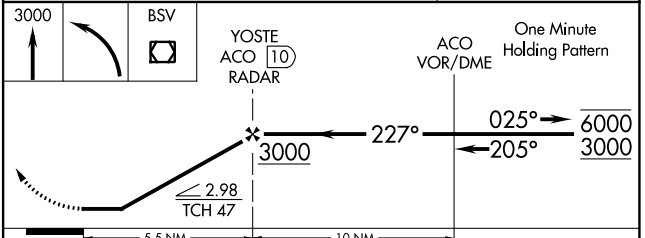
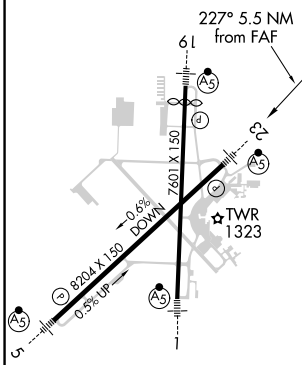
ATIS 121.05	CLEVELAND APP CON * 125.5 269.25	AKRON-CANTON TOWER 134.75 279.575	GND CON 121.7 348.6	CLNC DEL 132.05
-----------------------	--	---	-------------------------------	---------------------------



IF/IAF
AKRON
114.4 ACO
Chan 91

MISSED APCH FIX
BRIGGS
BSV
112.4
Chan 71

ELEV 1226	D	TDZE 1226
-----------	---	-----------



HIRL Rwy's 1-19 and 5-23 FAF to MAP 5.5 NM					
Knots	60	90	120	150	180
Min:Sec	5:30	3:40	2:45	2:12	1:50
<input checked="" type="checkbox"/> CIRCLING	1760-1 534 (600-1)		1780-1½ 554 (600-1½)		1800-2 574 (600-2)

EC-2, 23 MAR 2023 to 20 APR 2023

EC-2, 23 MAR 2023 to 20 APR 2023