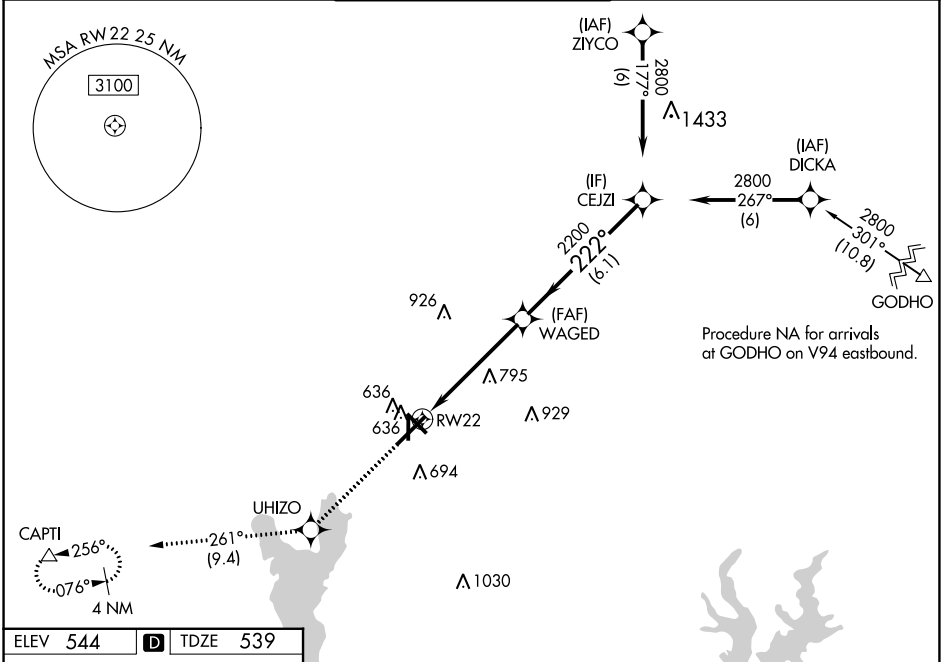


WAAS CH 45514 W22A	APP CRS 222°	Rwy Idg TDZE Apt Elev	7734 539 544
--	------------------------	-----------------------------	---

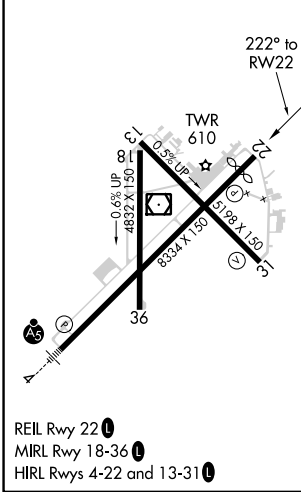
RNAV (GPS) RWY 22

TYLER POUNDS RGNL (TYR)

RNP APCH.		MISSED APPROACH: Climb to 2500 direct UHIZO and on track 261° to CAPTI and hold.		
<p>▽ For uncompensated Baro-VNAV systems, LNAV/VNAV NA below -5°C or above 54°C.</p> <p>△</p>				
ATIS 126.25	LONGVIEW APP CON* 128.75 379.15	POUNDS TOWER* 120.1 (CTAF) 257.8	GND CON 121.9	UNICOM 122.95



ELEV 544	D	TDZE 539
-----------------	----------	-----------------



2500	UHIZO	tr 261°	CAPTI	
*LNAV only.				
RWY 22		WAGED 2200	CEJZI 2800	
*1.4 NM to RWY 22		2200	GP 3.00° TCH 54	
1.4 NM		3.7 NM	6.1 NM	
CATEGORY	A	B	C	D
LPV DA		739-3/4	200 (200-3/4)	
LNAV/VNAV DA		807-7/8	268 (300-7/8)	
LNAV MDA	1040-1	501 (500-1)	1040-1 3/8	501 (500-1 3/8)
C CIRCLING	1040-1	496 (500-1)	1160-1 3/4	1280-2 1/4
			616 (700-1 3/4)	736 (800-2 1/4)

SC-2, 23 MAR 2023 to 20 APR 2023

SC-2, 23 MAR 2023 to 20 APR 2023