

APP CRS	Rwy Idg	<b>2864</b>
<b>172°</b>	TDZE	<b>6</b>
	Apt Elev	<b>7</b>

# RNAV (GPS) RWY 18

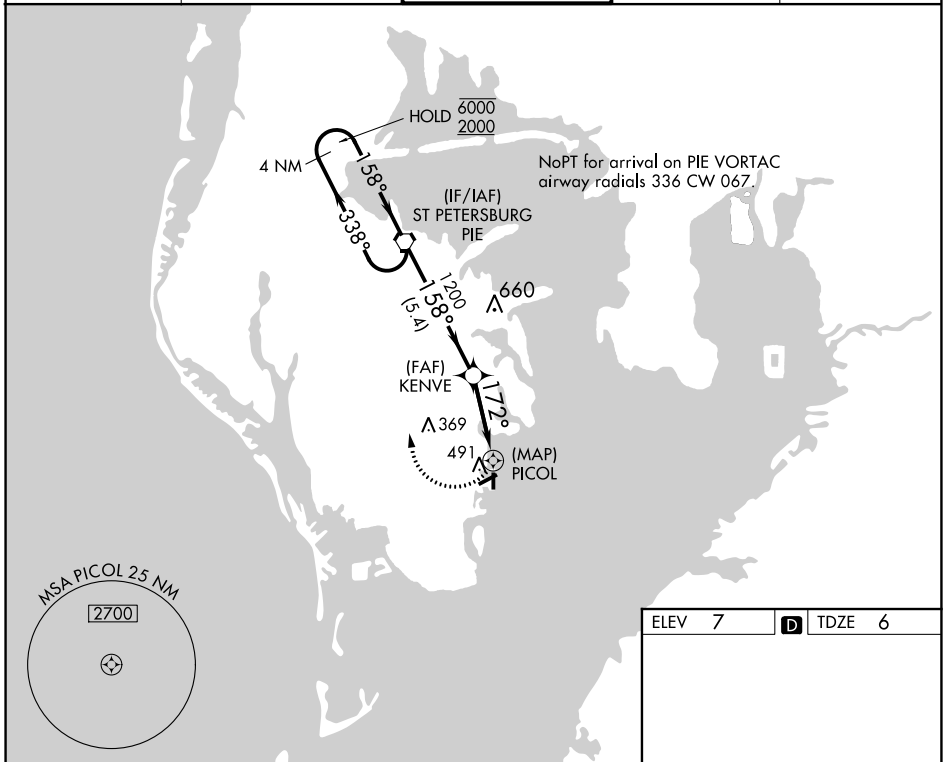
ALBERT WHITTED (SPG)

RNP APCH.

**▼** Circling Rwy 36 NA at night. Rwy 18 helicopter visibility reduction below 3/4 SM NA.  
**▲**

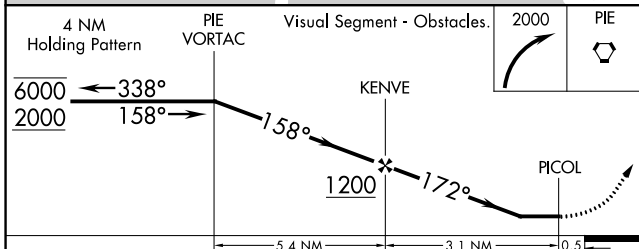
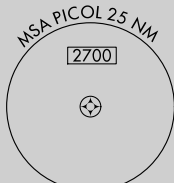
MISSED APPROACH: Climbing right turn to 2000 direct PIE VORTAC and hold.

ASOS <b>118.875</b>	TAMPA APP CON <b>119.65 316.05 (EAST)</b> <b>125.3 316.05 (WEST)</b>	<b>ALBERT WHITTED TOWER ★</b> <b>127.4 (CTAF) 257.6</b>	GND CON <b>121.8</b>	UNICOM <b>122.95</b>
------------------------	--	--	-------------------------	-------------------------

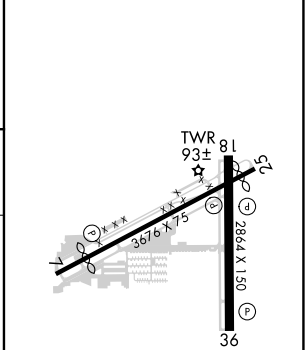


SE-3, 23 MAR 2023 to 20 APR 2023

SE-3, 23 MAR 2023 to 20 APR 2023



ELEV 7	<b>D</b> TDZE 6
--------	-----------------



CATEGORY	A	B	C	D
LNVA MDA	800-1 794 (800-1)	800-1 1/4 794 (800-1 1/4)		NA
<b>C</b> CIRCLING	860-1 1/4	853 (900-1 1/4)		NA

