

LOC/DME I-SEA 110.3 Chan 40	APP CRS 344°	Rwy Idg 34R 34C 11901 9426	TDZE 372 387	Apt Elev 432 432
---	------------------------	---	------------------------	----------------------------

ILS or LOC RWY 34R

SEATTLE-TACOMA INTL (SEA)

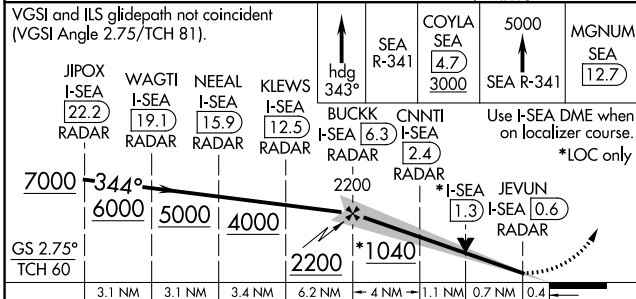
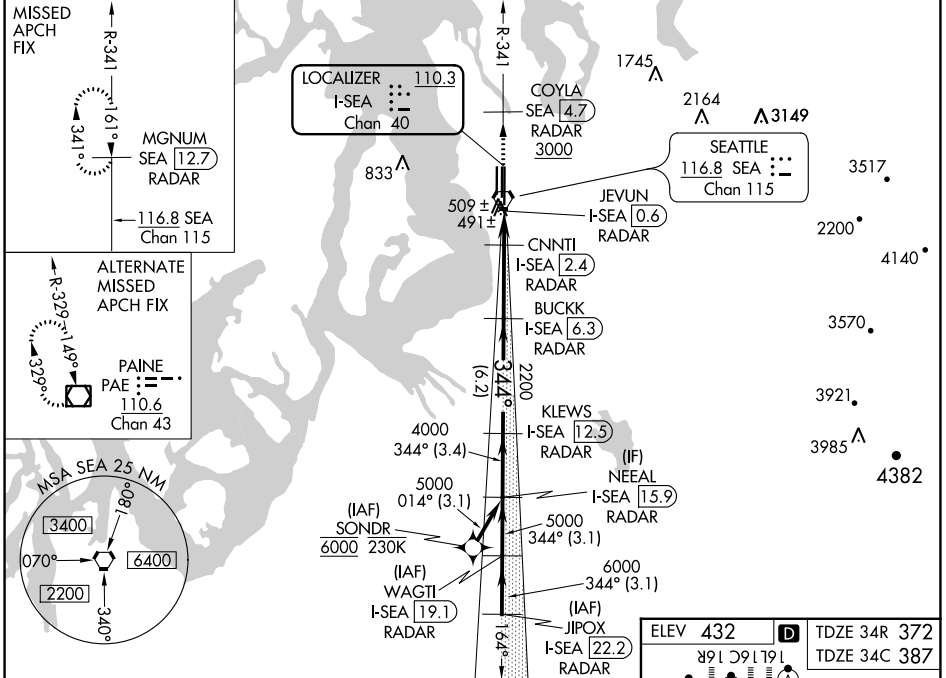
From SONDR: RNAV 1-GPS required. DME or RADAR required.

MALS Rwy 34R/C

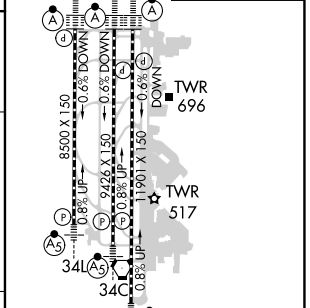
MISSED APPROACH: Climb on heading 343° and outbound on SEA VORTAC R-341 to cross COYLA/SEA 4.7 DME/RADAR at or above 3000 then climb to 5000 on SEA VORTAC R-341 to MGNUM/SEA 12.7 DME/RADAR and hold, continue climb-in-hold to 5000.

Inop table does not apply to Sidestep 34C Cats A/B. Simultaneous approach authorized with Rwy 34L.

D-ATIS 118.0	SEATTLE APP CON 133.65 273.45	SEATTLE TOWER 119.9 239.3 (Rwys 16L, 16C, 34C, 34R) 120.95 239.3 (Rwys 16R, 34L)	GND CON 121.7	CLNC DEL 128.0	CPDLC
------------------------	---	--	-------------------------	--------------------------	-------



ELEV 432	TDZE 34R 372
	TDZE 34C 387



CATEGORY	A	B	C	D
S-ILS 34R	572/18 200 (200-½)			
S-LOC 34R	740/24	368 (400-½)	740/35	368 (400-¾)
SIDESTEP 34C	760/55 373 (400-1)		760-1½ 373 (400-1½)	
◻ CIRCLING	1000-1 568 (600-1)		1000-1½ 568 (600-1½)	1000-2 568 (600-2)

344° 6.1 NM from FAF → 34R					
HIRL all Rwys TDZ/CL Rwys 16L, 16C, 16R and 34R					
FAF to MAP 5.8 NM					
Knots	60	90	120	150	180
Min:Sec	5:48	3:52	2:54	2:19	1:56