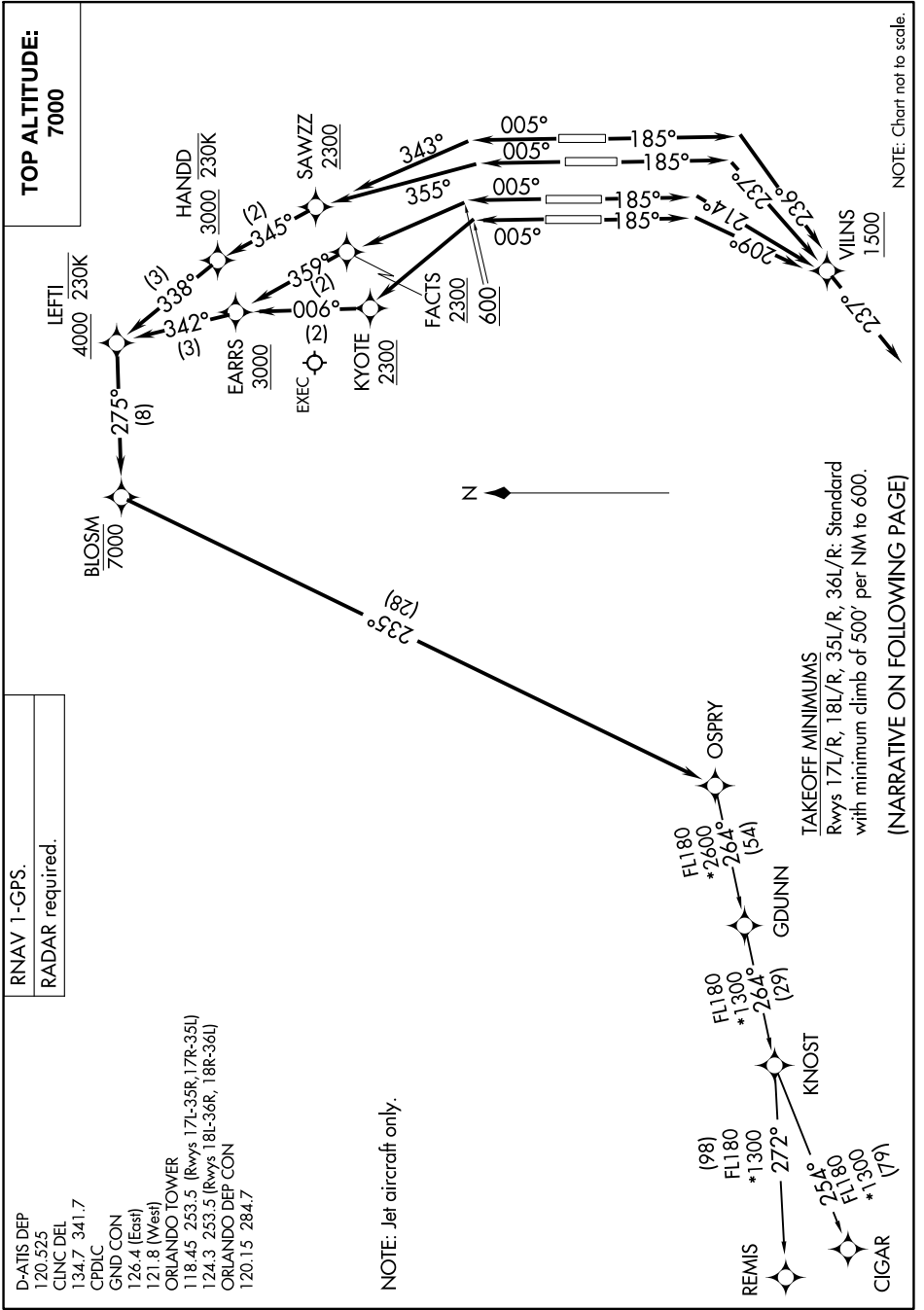


OSPRY ONE DEPARTURE (RNAV)

SE-3, 23 MAR 2023 to 20 APR 2023



NOTE: Chart not to scale.

RNAV 1-GPS.
RADAR required.

D-ATIS DEP
120.525
CLNC DEL
134.7 341.7
CPDLC
GND CON
126.4 (East)
121.8 (West)
ORLANDO TOWER
118.45, 253.5 (Rwys 17L-35R, 17R-35L)
124.3, 253.5 (Rwys 18L-36R, 18R-36L)
ORLANDO DEP CON
120.15, 284.7

NOTE: Jet aircraft only.

TAKEOFF MINIMUMS
Rwys 17L/R, 18L/R, 35L/R, 36L/R: Standard
with minimum climb of 500' per NM to 600.

(NARRATIVE ON FOLLOWING PAGE)

OSPRY ONE DEPARTURE (RNAV)

SE-3, 23 MAR 2023 to 20 APR 2023