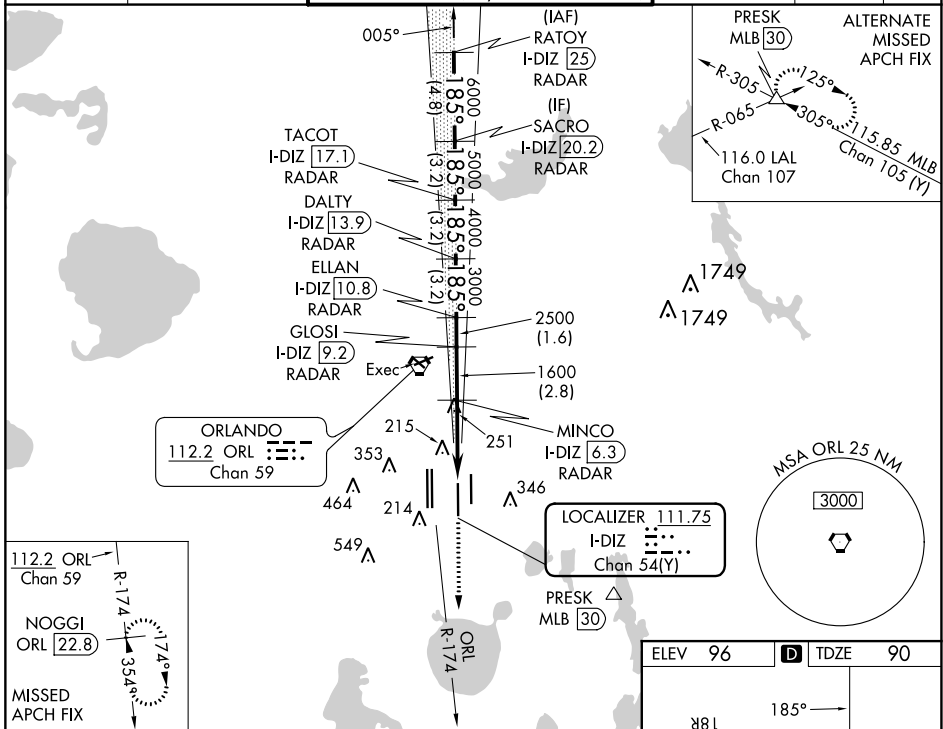


LOC/DME I-DIZ 111.75 Chan 54(Y)	APP CRS 185°	Rwy Idg 10000 TDZE 90 Apt Elev 96
---	------------------------	--

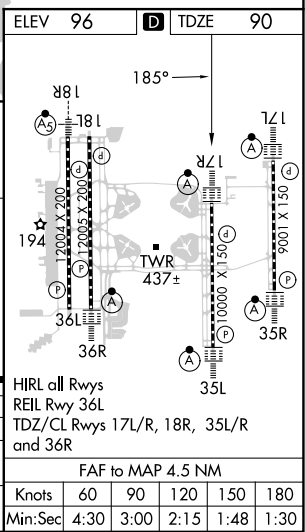
ILS or LOC RWY 17R

ORLANDO INTL (MCO)

RADAR required for procedure entry. DME or RADAR required.		ALSF-2 	MISSED APPROACH: Climb to 3000 on ORL VORTAC R-174 to NOGGI/ ORL 22.8 DME and hold.
D-ATIS ARR 121.25 DEP 120.525		ORLANDO APP CON 124.8 307.0	ORLANDO TOWER 118.45 253.5 (Rwys 17L-35R, 17R-35L) 124.3 253.5 (Rwys 18L-36R, 18R-36L)
GND CON 126.4 (East) 121.8 (West)		CLNC DEL 134.7 341.7	CPDLC



RATYOY I-DIZ [25] RADAR		SACRO I-DIZ [20.2] RADAR		TACOT I-DIZ [17.1] RADAR		DALTY I-DIZ [13.9] RADAR		ELLAN I-DIZ [10.8] RADAR		GLOSI I-DIZ [9.2] RADAR		MINCO I-DIZ [6.3] RADAR		ORL R-174		NOGGI ORL [22.8]	
6000		185°		785°		5000		4000		3000		2500		1600		3000	
-4.8 NM		-3.2 NM		-3.2 NM		-3.2 NM		-1.6 NM		-2.8 NM		-3.4 NM		-1.1 NM			
CATEGORY		A		B		C		D									
S-ILS 17R				290/18		200 (200-½)											
S-LOC 17R		520/24		430 (500-½)		520/40		430 (500-¾)									
CIRCLING		740-1		644 (700-1)		740-1¾		644 (700-1¾)		740-2		644 (700-2)					



SE-3, 23 MAR 2023 to 20 APR 2023

SE-3, 23 MAR 2023 to 20 APR 2023