

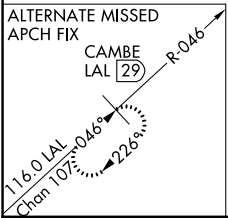
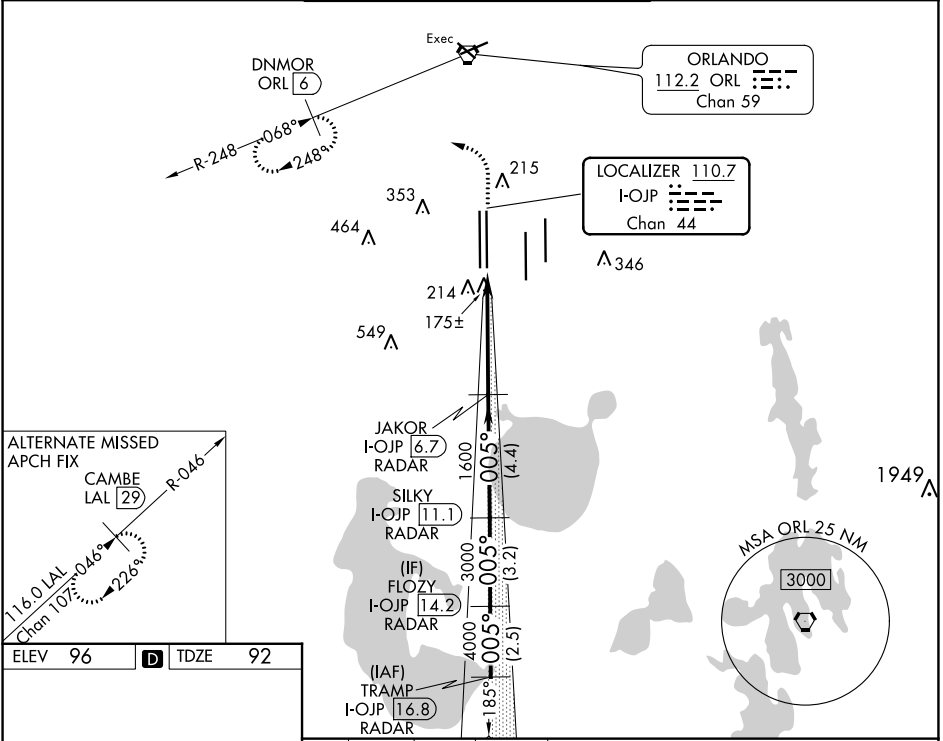
LOC/DME I-OJP 110.7 Chan 44	APP CRS 005°	Rwy Idg 11601 TDZE 92 Apt Elev 96
---	------------------------	--

ILS RWY 36R (SA CAT I)

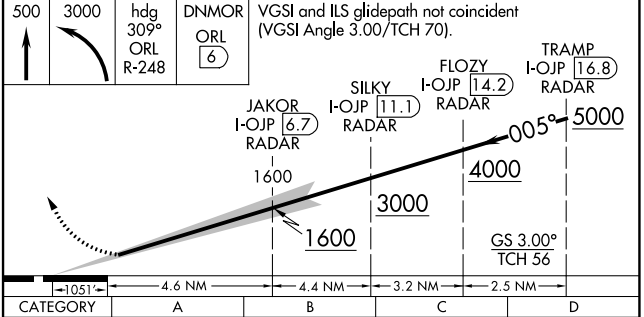
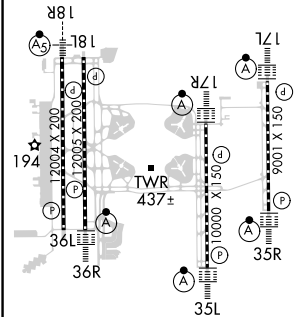
ORLANDO INTL (MCO)

RADAR required for procedure entry. DME or RADAR required.		ALSF-2	MISSED APPROACH: Climb to 500 then climbing left turn to 3000 on heading 309° and ORL R-248 to DNMOR/ORL 6 DME and hold, continue climb-in-hold to 3000.	
Simultaneous approach authorized. Requires specific OPSPEC, MSPEC or LOA approval.				

D-ATIS ARR 121.25 DEP 120.525	ORLANDO APP CON 124.8 307.0	ORLANDO TOWER 118.45 253.5 (Rwys 17L-35R, 17R-35L) 124.3 253.5 (Rwys 18L-36R, 18R-36L)	GND CON 126.4 (East) 121.8 (West)	CLNC DEL 134.7 341.7	CPDLC
---	---------------------------------------	--	---	--	-------



ELEV 96	D	TDZE 92
---------	----------	---------



CATEGORY	A	B	C	D
S-ILS 36R	RA 158/14 150 DA 242			

SA CATEGORY I ILS - SPECIAL AIRCREW & AIRCRAFT CERTIFICATION REQUIRED

SE-3, 23 MAR 2023 to 20 APR 2023

SE-3, 23 MAR 2023 to 20 APR 2023