

WAAS CH <b>40027</b> <b>W28D</b>	APP CRS <b>281°</b>	Rwy Idg TDZE Apt Elev	<b>10102</b> <b>1174</b> <b>1203</b>
--	------------------------	-----------------------------	--

# RNAV (GPS) Y RWY 28R

PITTSBURGH INTL (PIT)

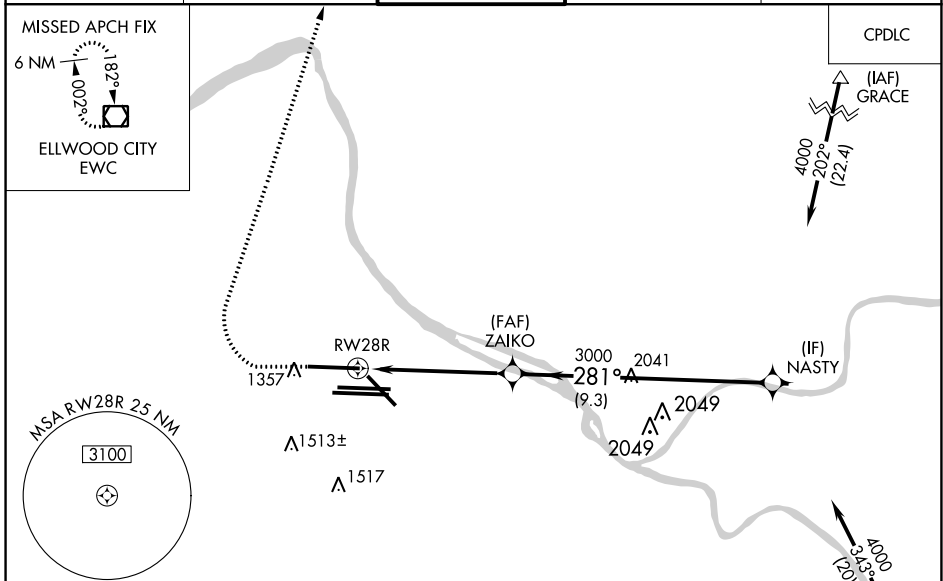
**⚠** For uncompensated Baro-VNAV systems, LNAV/VNAV NA below -18°C (0°F) or above 54°C (130°F). Simultaneous approach authorized. DME/DME RNP-0.3 NA. For inop ALS, increase LNAV Cats C/D visibility to 1 3/8 SM. LNAV procedure NA during simultaneous operations. Use of FD or AP required during simultaneous operations.

MALSR

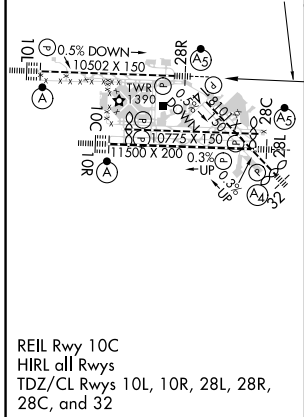


**MISSED APPROACH:** Climb to 1800 then climbing right turn to 4000 direct EWC VOR/DME and hold.

D-ATIS ARR <b>127.25</b> DEP <b>135.9</b>	PITTSBURGH APP CON <b>123.95 360.8</b>	PITTSBURGH TOWER <b>128.3 291.7</b>	GND CON SOUTH <b>121.9 348.6</b> NORTH <b>127.8 348.6</b>	CLNC DEL <b>126.75 353.7</b>
---	---	--	---	---------------------------------



ELEV 1203	<b>D</b>	TDZE 1174
-----------	----------	-----------



CATEGORY	A	B	C	D
LPV DA	1374/18 200 (200-1/2)			
LNAV/VNAV DA	1629/45 455 (500-7%)			
LNAV MDA	1640/24	466 (500-1/2)	1640/50	466 (500-1)
<b>C</b> CIRCLING	1700-1	497 (500-1)	1880-2 677 (700-2)	1880-2 1/4 677 (700-2 1/4)

NE-4, 23 MAR 2023 to 20 APR 2023

NE-4, 23 MAR 2023 to 20 APR 2023