

RNAV (RNP) Z RWY 28R

PITTSBURGH INTL (PIT)

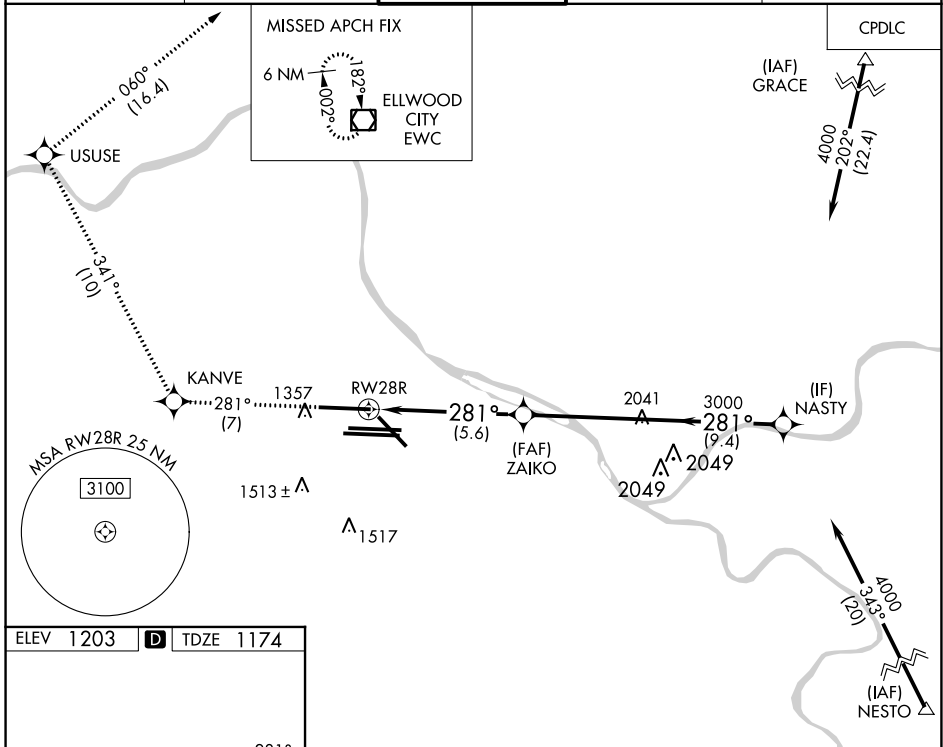
APP CRS 281°	Rwy Idg 10102
	TDZE 1174
	Apt Elev 1203

▼ For uncompensated Baro-VNAV systems, procedure NA below -18°C (0°F) or above 54°C (130°F). Simultaneous approach authorized. GPS required. For inop ALS, increase RNP 0.30 all Cats visibility to 1 1/4 SM.

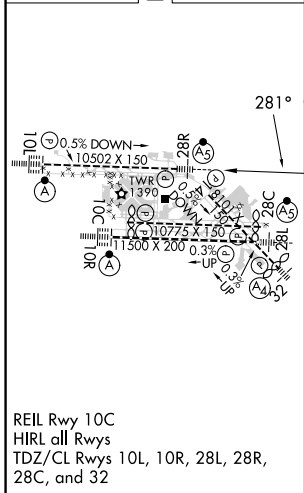


MISSED APPROACH: Climb to 4000 on track 281° to KANVE and track 341° to USUSE and track 060° to EWC VOR/DME and hold.

D-ATIS ARR 127.25 DEP 135.9	PITTSBURGH APP CON 123.95 360.8	PITTSBURGH TOWER 128.3 291.7	GND CON SOUTH 121.9 348.6 NORTH 127.8 348.6	CLNC DEL 126.75 353.7
---	---	--	---	---------------------------------



ELEV 1203	D	TDZE 1174
-----------	----------	-----------



4000	KANVE	USUSE	EWC
tr 281°	tr 341°	tr 060°	
VGSi and RNAV glidepath not coincident (VGSi Angle 3.00/TCH 71).			
RW28R		3000	4000
5.6 NM		9.3 NM	
GP 3.00°	TCH 55		
CATEGORY	A	B	C
RNP 0.30 DA	1675/55 501 (500-1)		
AUTHORIZATION REQUIRED			

NE-4, 23 MAR 2023 to 20 APR 2023

NE-4, 23 MAR 2023 to 20 APR 2023