

RNAV (RNP) Z RWY 28L

PITTSBURGH INTL (PIT)

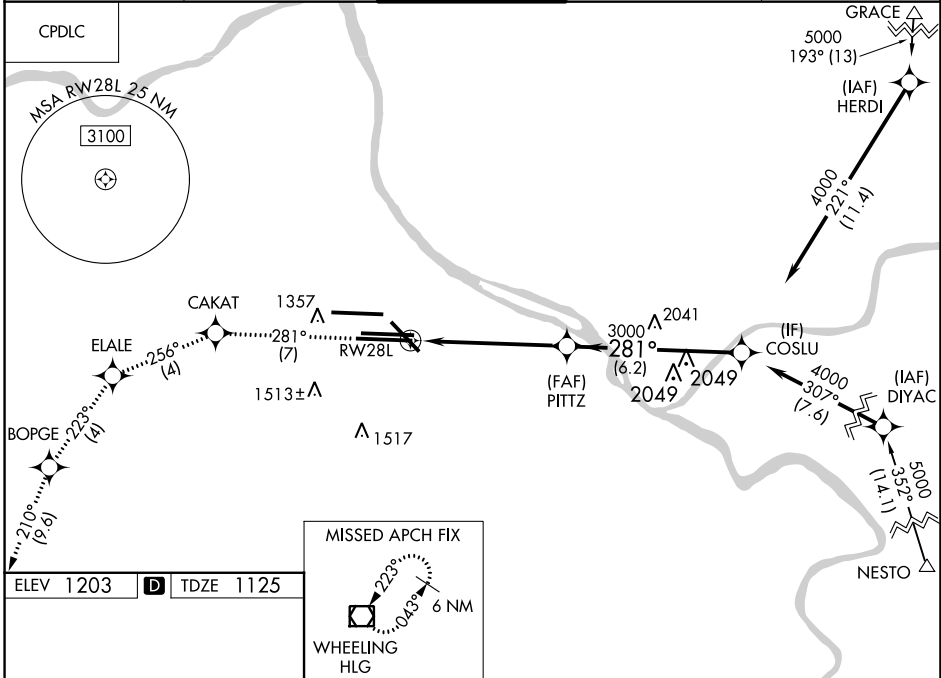
APP CRS	Rwy Idg	11500
281°	TDZE	1125
	Apt Elev	1203

▼ For uncompensated Baro-VNAV systems procedure NA below -18°C (0°F) or above 54°C (130°F). Simultaneous approach authorized. GPS Required. For inoperative ALS, increase RNP 0.13 all Cats visibility to RVR 6000.

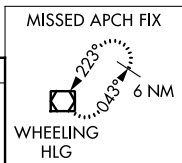
MALSR

MISSED APPROACH: Climb to 4000 on track 281° to CAKAT and track 256° to ELALE and track 223° to BOPGE and track 210° to HLG VOR/DME and hold.

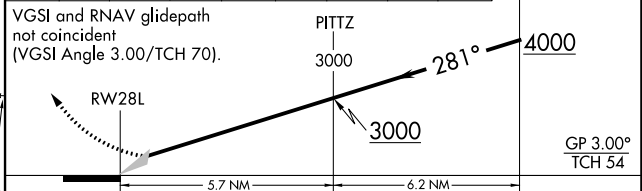
D-ATIS ARR 127.25 DEP 135.9	PITTSBURGH APP CON 123.95 360.8	PITTSBURGH TOWER 128.3 291.7	GND CON SOUTH 121.9 348.6 NORTH 127.8 348.6	CLNC DEL 126.75 353.7
---	---	--	---	---------------------------------



ELEV 1203	D	TDZE 1125
------------------	----------	------------------



4000	tr 281°	CAKAT	tr 256°	ELALE	tr 223°	BOPGE	tr 210°	HLG	COSLU
------	---------	-------	---------	-------	---------	-------	---------	-----	-------



CATEGORY	A	B	C	D
RNP 0.13 DA		1529/40	404 (400-¾)	
RNP 0.30 DA		1579/45	454 (400-¾)	

REIL Rwy 10C
 HIRL all Rwys
 TDZ/CL Rwys 10L, 10R, 28L, 28R, 28C, and 32

NE-4, 23 MAR 2023 to 20 APR 2023

NE-4, 23 MAR 2023 to 20 APR 2023

AUTHORIZATION REQUIRED