

RNAV (RNP) Z RWY 28C

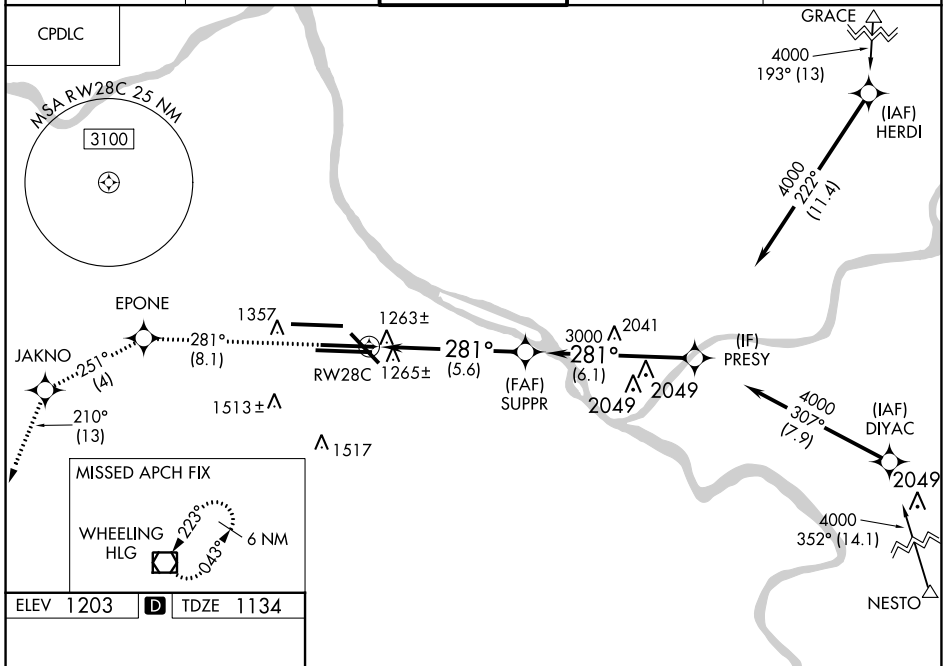
PITTSBURGH INTL (PIT)

APP CRS	Rwy Idg	9708
281°	TDZE	1134
	Apt Elev	1203

▼ For uncompensated Baro-VNAV systems procedure NA below -17°C (1°F) or above 46°C (116°F). GPS Required. Rwy 28C helicopter visibility reduction below RVR 4000 NA. Simultaneous approach authorized with ILS or LOC Rwy 28R, ILS Rwy 28R (Cat II). Use of FD or AP providing RNAV track guidance required during simultaneous operations.

MISSED APPROACH: Climb to 4000 on track 281° to EPONE on track 251° to JAKNO and on track 210° to HLG VOR/DME and hold.

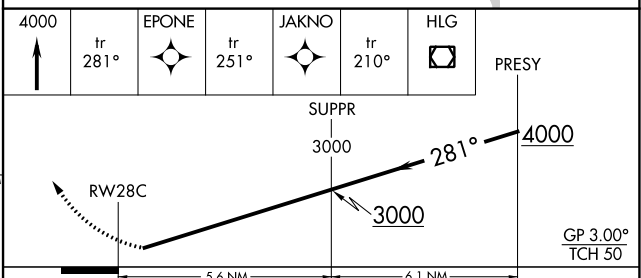
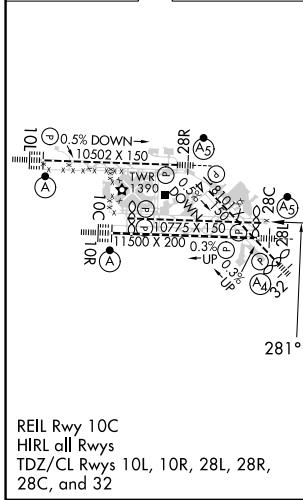
D-ATIS	PITTSBURGH APP CON	PITTSBURGH TOWER	GND CON	CLNC DEL
ARR 127.25	123.95 360.8	128.3 291.7	SOUTH 121.9 348.6	126.75 353.7
DEP 135.9			NORTH 127.8 348.6	



NE-4, 23 MAR 2023 to 20 APR 2023

NE-4, 23 MAR 2023 to 20 APR 2023

ELEV	1203	D	TDZE	1134
------	-------------	----------	------	-------------



CATEGORY	A	B	C	D
RNP 0.14 DA		1527/60	393 (400-1¼)	
RNP 0.16 DA		1531-1½	397 (400-1½)	
RNP 0.30 DA		1576-1½	442 (400-1½)	

AUTHORIZATION REQUIRED