

LOC I-GUT	APP CRS	Rwy Idg	10R	10C
<b>108.9</b>	<b>101°</b>	<b>11492</b>	<b>9708</b>	<b>1135</b>
		TDZE	<b>1135</b>	<b>1141</b>
		Apt Elev	<b>1203</b>	<b>1203</b>

# ILS or LOC RWY 10R

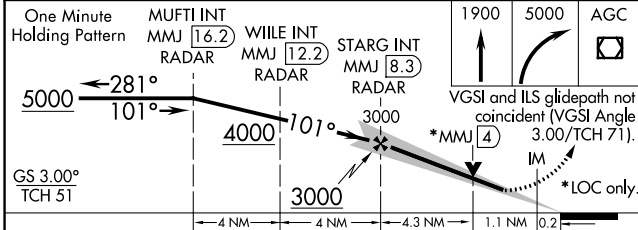
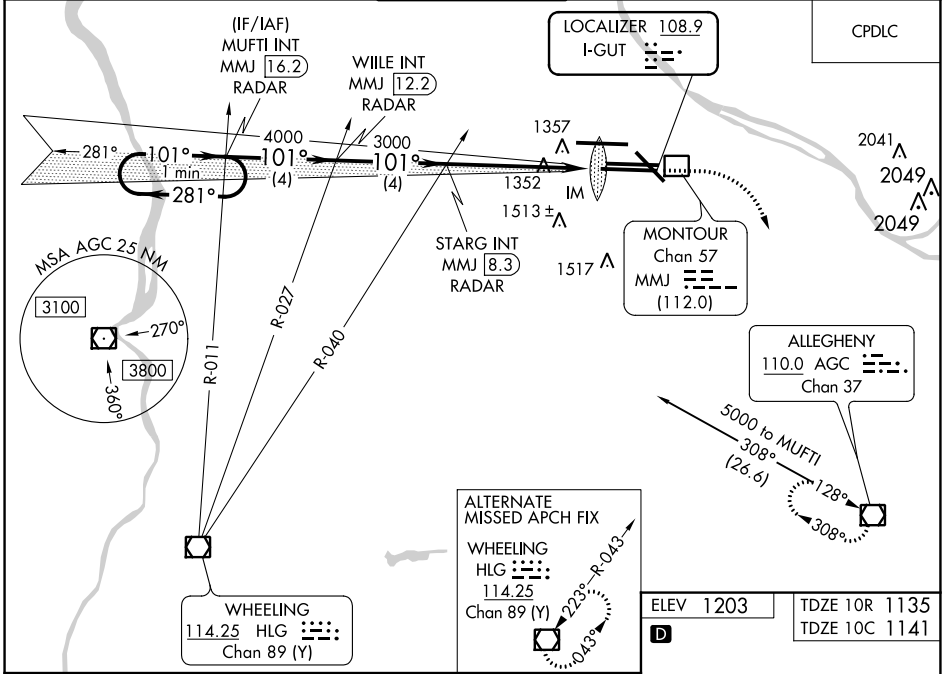
PITTSBURGH INTL (PIT)

**⚠** Simultaneous approach authorized with Rwy 10L. For inop ALS, increase S-LOC 10R Cat E visibility to RVR 4000. For inop ALS, increase S-LOC 10R Cat C, D, E visibility to 1/8 SM.

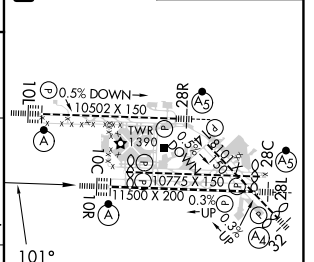


**MISSED APPROACH:** Climb to 1900 then climbing right turn to 5000 direct AGC VOR/DME and hold, continue climb-in-hold to 5000.

D-ATIS	PITTSBURGH APP CON	PITTSBURGH TOWER	GND CON	CLNC DEL
ARR <b>127.25</b>	<b>123.95 360.8</b>	<b>128.3 291.7</b>	SOUTH <b>121.9 348.6</b>	<b>126.75 353.7</b>
DEP <b>135.9</b>			NORTH <b>127.8 348.6</b>	



ELEV 1203	TDZE 10R 1135
	TDZE 10C 1141



CATEGORY	A	B	C	D	E
S-ILS 10R	1335/18 200 (200-1/2)			1335/24 200 (200-1/2)	
S-LOC 10R	1620/24 485 (500-1/2)		1620-1/2 479 (500-1/2)	1620-2/4 479 (500-2)	1620-2/4 479 (500-2)
SIDESTEP 10C	1620/50	479 (500-1)	1620-1/2 479 (500-1/2)	1620-2/4 479 (500-2)	1620-2/4 479 (500-2)
<b>C</b> CIRCLING	1700-1	497 (500-1)	1880-2 677 (700-2)	1880-2 677 (700-2)	1880-2 677 (700-2)

REIL Rwy 10C					
HIRL all Rwys					
TDZ/CL Rwys 10L, 10R, 28L, 28R, 28C, and 32					
FAF to MAP 5.6 NM					
Knots	60	90	120	150	180
Min:Sec	5:36	3:44	2:48	2:14	1:52

NE-4, 23 MAR 2023 to 20 APR 2023

NE-4, 23 MAR 2023 to 20 APR 2023