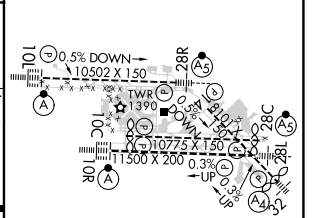
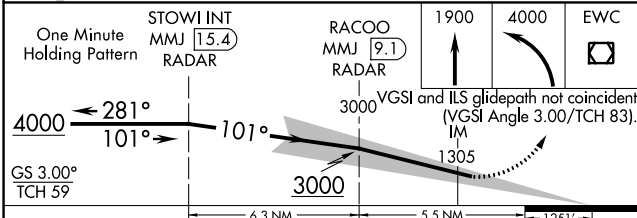
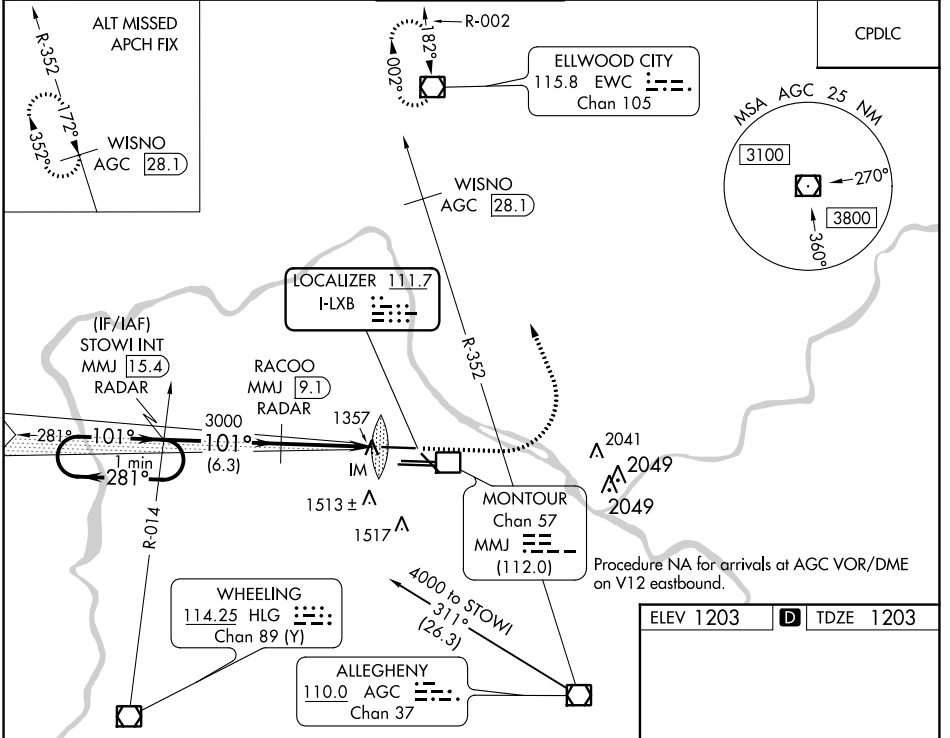


LOC I-LXB 111.7	APP CRS 101°	Rwy Idg 10502 TDZE 1203 Apt Elev 1203
---------------------------	------------------------	--

ILS RWY 10L (CAT II & III)

PITTSBURGH INTL (PIT)

<p>Simultaneous approach authorized. DME or RADAR required. CAT II: RVR 1000 authorized with specific OPSPEC, MSPEC, or LOA approval and use of autoland or HUD to touchdown. DME from MMJ DME. Simultaneous reception of I-LXB and MMJ DME required.</p>		<p>ALSf-2</p>	<p>MISSED APPROACH: Climb to 1900 then climbing left turn to 4000 direct EWC VOR/DME and hold.</p>	
<p>D-ATIS ARR 127.25 DEP 135.9</p>	<p>PITTSBURGH APP CON 123.95 360.8</p>	<p>PITTSBURGH TOWER 128.3 291.7</p>	<p>GND CON SOUTH 121.9 348.6 NORTH 127.8 348.6</p>	<p>CLNC DEL 126.75 353.7</p>



CATEGORY	A	B	C	D
S-ILS 10L	CAT II RA NA/12 100 DA 1303			
S-ILS 10L	CAT III RVR 06			

CATEGORY II & III ILS - SPECIAL AIRCREW & AIRCRAFT CERTIFICATION REQUIRED

REIL Rwy 10C
HIRL all Rwys
TDZ/CL Rwys 10L, 10R, 28L, 28R, 28C, and 32

NE-4, 23 MAR 2023 to 20 APR 2023

NE-4, 23 MAR 2023 to 20 APR 2023