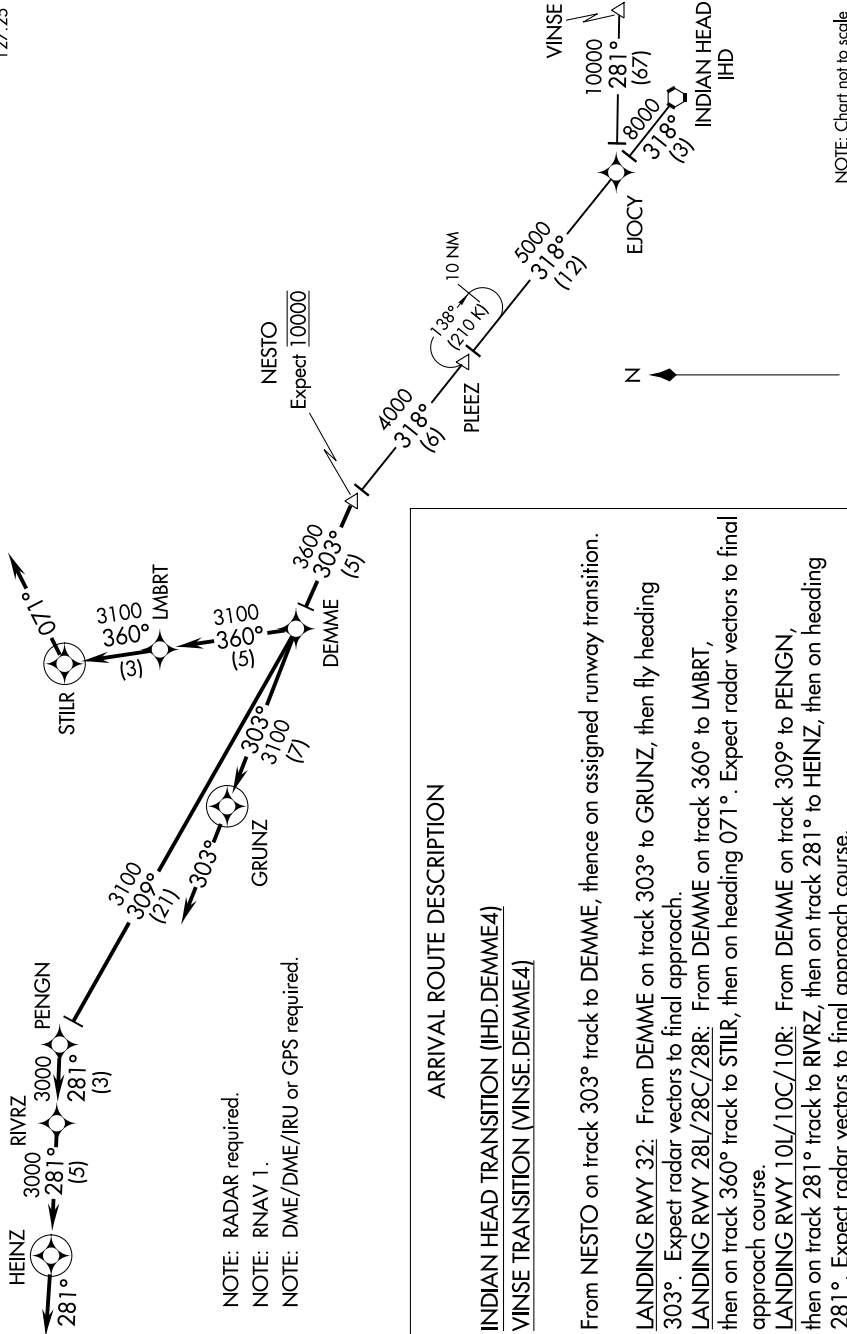


DEMME FOUR ARRIVAL (RNAV)

PITTSBURGH INTL (PIT)
PITTSBURGH, PENNSYLVANIA

PITTSBURGH APP CON
123.95 336.2
D-ATIS
127.25



NOTE: RADAR required.
 NOTE: RNAV 1.
 NOTE: DME/DME/IRU or GPS required.

ARRIVAL ROUTE DESCRIPTION

INDIAN HEAD TRANSITION (IHD.DEMME4)
VINSE TRANSITION (VINSE.DEMME4)

From NESTO on track 303° track to DEMME, thence on assigned runway transition.

LANDING RWY 32: From DEMME on track 303° to GRUNZ, then fly heading 303°. Expect radar vectors to final approach.

LANDING RWY 28L/28C/28R: From DEMME on track 360° to LMBRT, then on track 360° track to STILR, then on heading 071°. Expect radar vectors to final approach course.

LANDING RWY 10L/10C/10R: From DEMME on track 309° to PENG, then on track 281° track to RIVRZ, then on track 281° to HEINZ, then on heading 281°. Expect radar vectors to final approach course.

NOTE: Chart not to scale