

SPOKANE, WASHINGTON

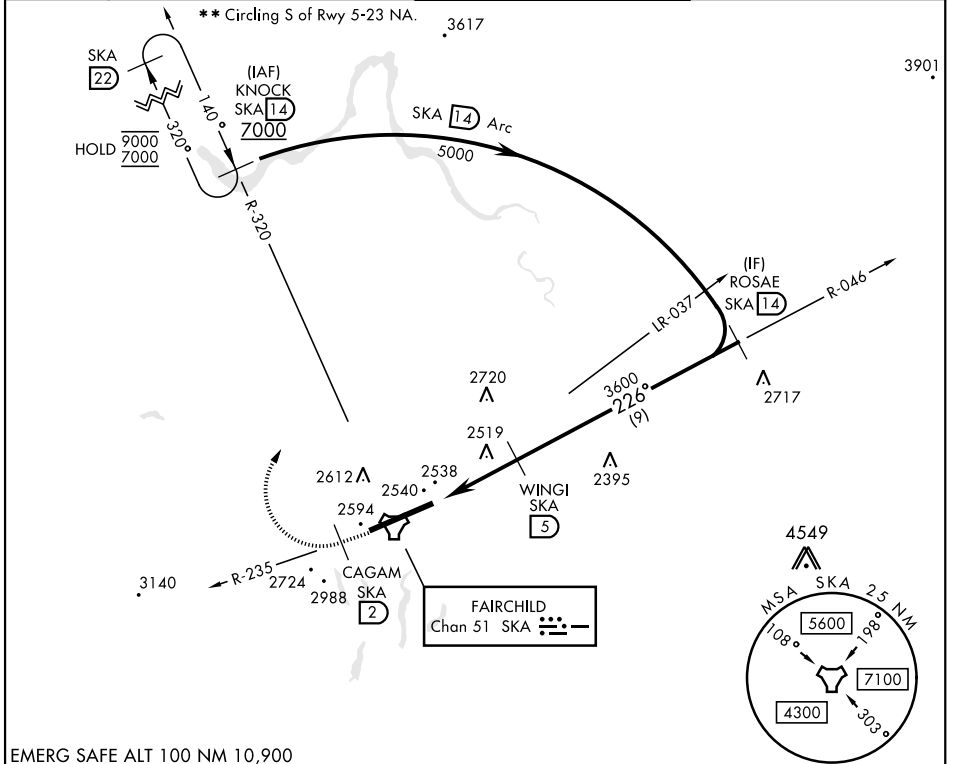
TACAN RWY 23

TACAN SKA Chan 51	APCH CRS 226°	Rwy Idg 13,899 TDZE 2423 Arpt Elev 2462
-----------------------------	-------------------------	--

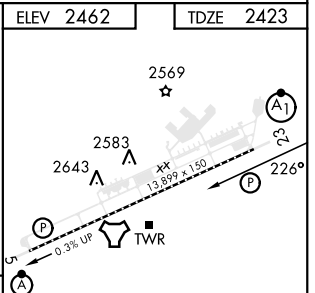
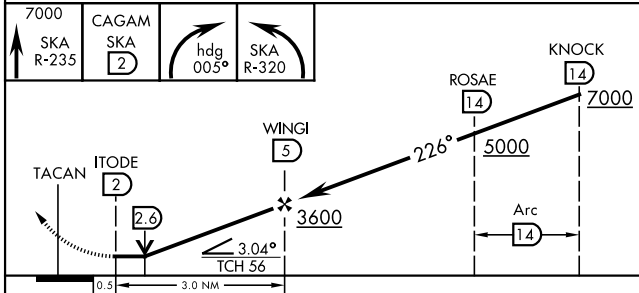
AL-553 [USAF]

FAIRCHILD AFB (KSKA)

RADAR required for KNOCK holding.		ALSF-1	MISSED APPROACH: Climb to 7000 via SKA TACAN R-235. At CAGAM, turn right hdg 005° to intcp SKA R-320 to KNOCK and hold, cont climb in hold to 7000.	
<p>▼ * When ALS inop, increase CAT AB RVR to 55 and vis to 1 mile, CAT CDE RVR to 60, vis to 1½ miles.</p>		(A1)		
ATIS 257.625	SPOKANE APP CON 123.75 282.25 133.35 263.0 (208° - 028°) (029° - 207°)	TOWER 120.35 233.7	GND CON 123.6 275.8	



EMERG SAFE ALT 100 NM 10,900



CATEGORY	A	B	C	D	E
S-23 *	2820/24	397 (400-½)	2820/35	397	(400-¾)
CIRCLING **	2900-1 438 (500-1)	2920-1 458 (500-1)	3040-1½ 578 (600-1½)	3040-2 578 (600-2)	3600-3 1138 (1200-3)

ELEV 2462	TDZE 2423
HIRL Rwy 5-23 TDZL/CL Rwy 5	

SPOKANE, WASHINGTON

47°37'N-117°39'W

FAIRCHILD AFB (KSKA)

Amdt 4 03NOV22

TACAN RWY 23

NW-1, 23 MAR 2023 to 20 APR 2023

NW-1, 23 MAR 2023 to 20 APR 2023