

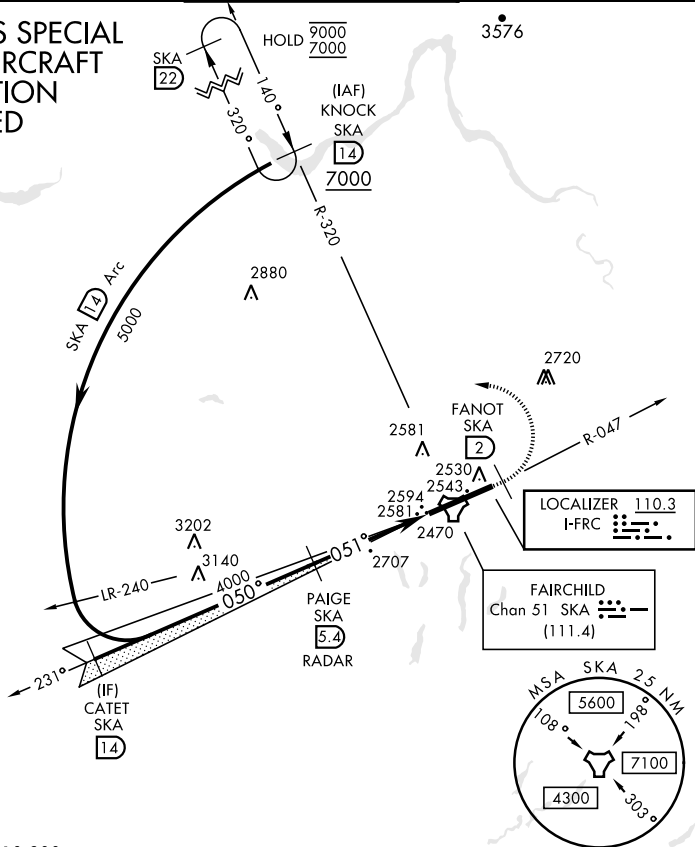
SPOKANE, WASHINGTON

# ILS RWY 5 (CAT II)

LOC I-FRC <b>110.3</b>	APCH CRS <b>051°</b>	Rwy Idg <b>13,899</b> TDZE <b>2462</b> Arpt Elev <b>2462</b>	AL-553 [USAF]	FAIRCHILD AFB (KSKA)
RADAR required for KNOCK holding.			ALSF-2	MISSED APPROACH: Climb to 7000 via SKA TACAN R-047. At FANOT turn left hdg 275° to intcp SKA R-320 to KNOCK and hold, continue climb in hold to 7000.

ATIS <b>257.625</b>	SPOKANE APP CON <b>123.75 282.25</b> (208° - 028°) <b>133.35 263.0</b> (029° - 207°)	TOWER <b>120.35 233.7</b>	GND CON <b>123.6 275.8</b>
------------------------	--	------------------------------	-------------------------------

## CATEGORY II ILS SPECIAL AIRCREW & AIRCRAFT CERTIFICATION REQUIRED



EMERG SAFE ALT 100 NM 10,900

KNOCK SKA (14) 7000		CATET (IF) SKA (14) Intcp Lcizr		PAIGE SKA (5.4) RADAR		7000 SKA R-047		FANOT SKA (2) hdg 275°		SKA R-320		ELEV 2462	TDZE 2462
5000		4000		4000		4000		TACAN		TWR 2685		2569	2583
Arc 14		Arc 14		Arc 14		Arc 14		Arc 14		Arc 14		2643	13,899 ± 150
GS 3.00° TCH 58		050°		051°		051°		051°		051°		2685	35° DOWN
4.6 NM		1.192		1.192		1.192		1.192		1.192		2685	2685
CATEGORY	A	B	C	D	E	HIRL Rwy 5-23		TDZL/CL Rwy 5					
S-ILS 5	RA 98/12		100	DA 2562									

SPOKANE, WASHINGTON

47°37'N-117°39'W

FAIRCHILD AFB (KSKA)

Amtd 2 03NOV22

# ILS RWY 5 (CAT II)

NW-1, 23 MAR 2023 to 20 APR 2023

NW-1, 23 MAR 2023 to 20 APR 2023