

APP CRS	Rwy Idg	<b>8500</b>
<b>309°</b>	TDZE	<b>430</b>
	Apt Elev	<b>477</b>

# RNAV (RNP) Y RWY 31L

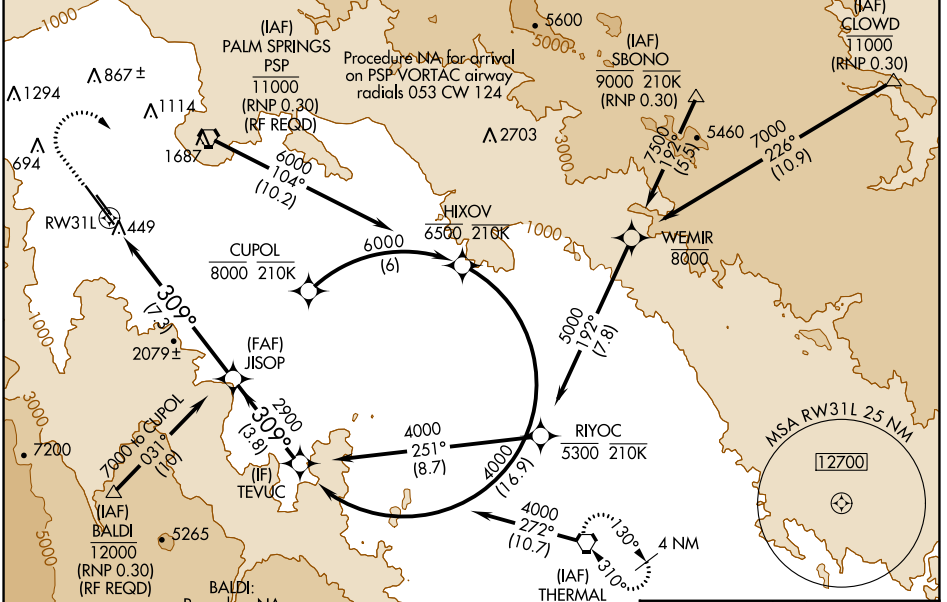
PALM SPRINGS INTL (PSP)

RNP AR APCH.

**⚠** Missed approach requires minimum climb of 340' per NM to 3000. For uncompensated Baro-VNAV systems, procedure NA below 2°C or above 54°C.

**MISSED APPROACH:** Climb to 1800, then climbing right turn to 4000 direct TRM VORTAC and hold.

ATIS	SOCAL APP CON *	PALM SPRINGS TOWER *	GND CON	CLNC DEL	UNICOM
<b>124.65</b>	<b>126.7 370.95</b> <b>135.275 251.1</b>	<b>119.7 (CTAF) 0 377.05</b>	<b>121.9</b>	<b>128.35</b>	<b>122.95</b>



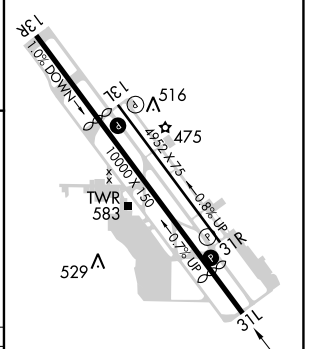
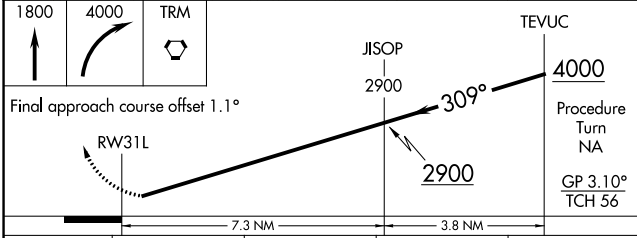
SW-3, 23 MAR 2023 to 20 APR 2023

SW-3, 23 MAR 2023 to 20 APR 2023

ELEV	<b>477</b>	<b>D</b>	TDZE	<b>430</b>
------	------------	----------	------	------------

Procedure NA for arrival on TRM VORTAC airway radials 053 CW 124

Procedure NA for arrival on TRM VORTAC airway radials 203 CW 078



CATEGORY	A	B	C	D
RNP 0.30 DA		734-1	304 (300-1)	

## AUTHORIZATION REQUIRED

HIRL Rwy 13R-31L  
 MIRL Rwy 13L-31R  
 REL Rwy 13R and 31L  
 REL Rwy 13L and 31R