

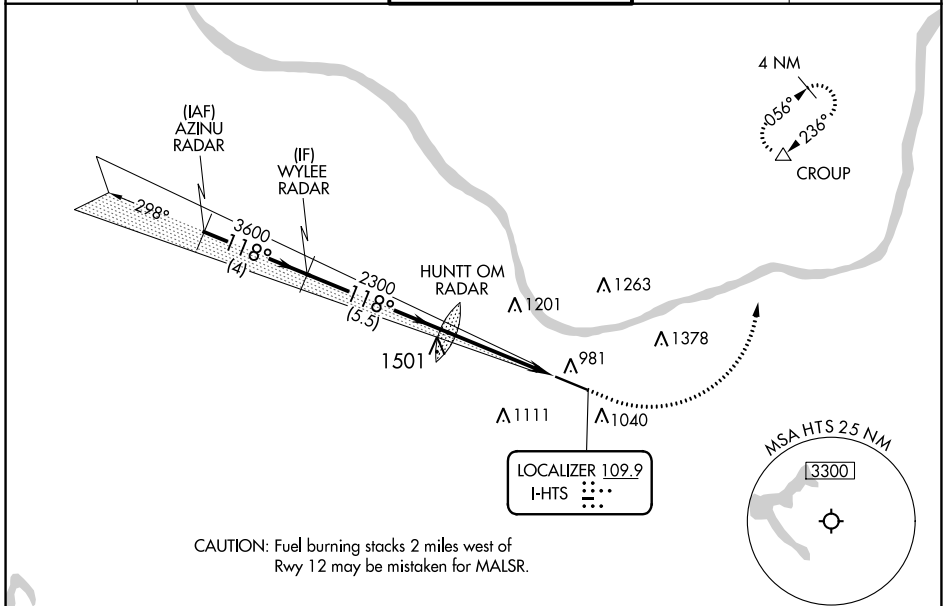
ILS or LOC RWY 12

TRI-STATE/MILTON J FERGUSON FLD (HTS)

LOC I-HTS 109.9	APP CRS 118°	Rwy Idg 6516
		TDZE 828
		Apt Elev 828

RNAV 1 - GPS required. RADAR required.		MALSR	MISSED APPROACH: Climb to 1700 then climbing left turn to 3000 direct CROUP and hold.
*RVR 1800 authorized with use of FD or AP or HUD to DA.		(AS)	

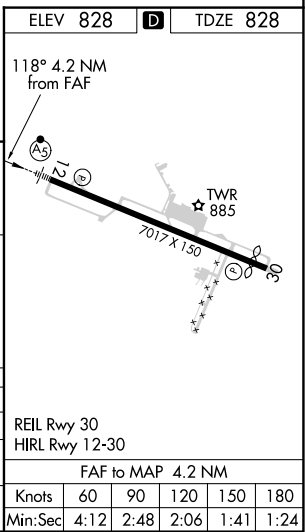
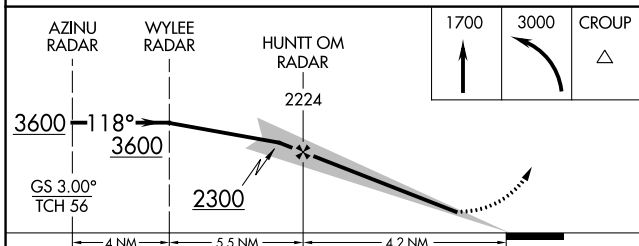
ATIS 125.2	HUNTINGTON APP CON 119.75 270.1	HUNTINGTON TOWER 118.5 270.1	GND CON 121.9	CLNC DEL 118.05
----------------------	---	--	-------------------------	---------------------------



NE-4, 23 MAR 2023 to 20 APR 2023

NE-4, 23 MAR 2023 to 20 APR 2023

ELEV 828	D	TDZE 828
----------	----------	----------



CATEGORY	A	B	C	D
S-ILS 12*	1028/24		200 (200-½)	
S-LOC 12	1380/24	552 (600-½)	1380/60	552 (600-1¼)
C CIRCLING	1380-1	552 (600-1)	1520-2 692 (700-2)	1740-3 912 (1000-2)

ILS or LOC RWY 12