

WAAS CH 69611 W17A	APP CRS 168°	Rwy ldg TDZE Apt Elev	5000 1135 1166
--	------------------------	-----------------------------	---

RNAV (GPS) RWY 17

EDWARD F KNAPP STATE (MPV)

RNP APCH - GPS.
RADAR required for procedure entry at VUYUD.

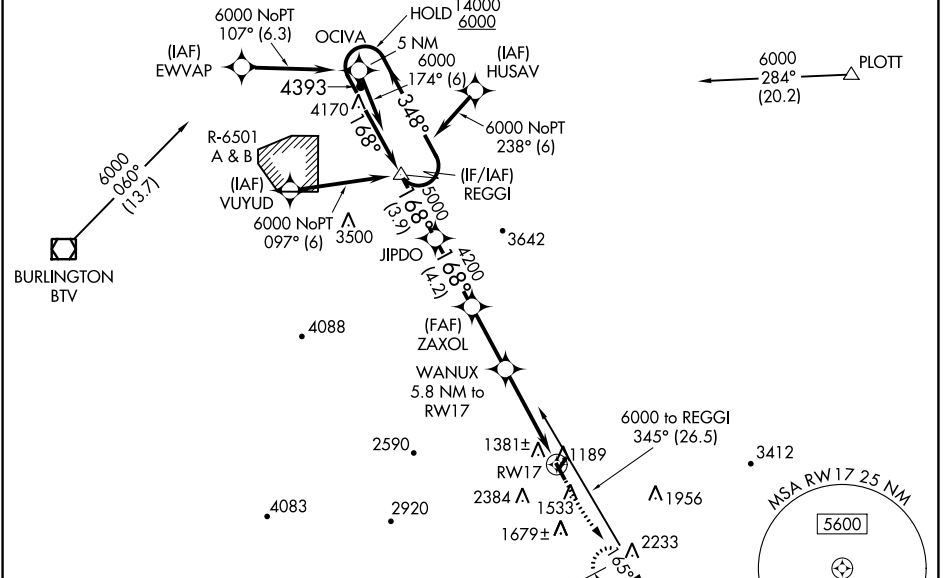
⚠ Rwy 17 helicopter visibility reduction below 1 SM NA. Inop table does not apply to LPV all Cats and LNAV Cats A and B. Baro-VNAV NA. When local altimeter setting not received, procedure NA. Straight-in Rwy 17 NA at night, Circling Rwy 5, 17, 35 NA at night. For inop ALS, increase LNAV/VNAV all Cats visibility to 1½ SM.

❄ -20°C

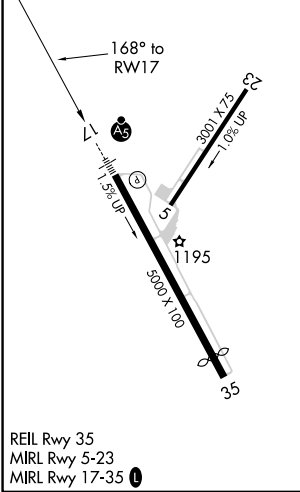
MALSR
A5

MISSED APPROACH:
Climb to 1720 then climb to 5200 direct MPV VOR/DME and hold, continue climb-in-hold to 5200.

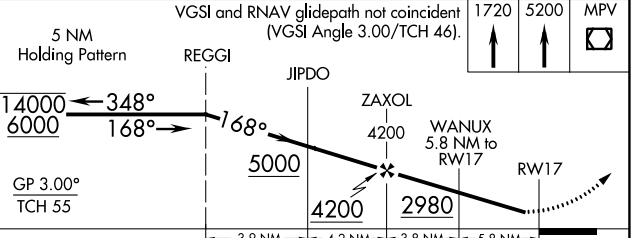
ASOS 132.675	BOSTON CENTER 135.7 282.2	UNICOM 122.8 (CTAF)
------------------------	-------------------------------------	-------------------------------



ELEV 1166	TDZE 1135
-----------	-----------



Procedure NA for arrival on MPV
VOR/DME airway radials 315 CW 037.



CATEGORY	VGSi and RNAV glidepath not coincident (VGSi Angle 3.00/TCH 46)			
	A	B	C	D
LPV DA	1509-1 374 (400-1)			
LNAV/ VNAV DA	1624-1 489 (500-1)			
LNAV MDA	1680-1	545 (600-1)	1680-1½	545 (600-1½)
C CIRCLING	1980-1¼	814 (900-1¼)	2700-3 1534 (1600-3)	2920-3 1754 (1800-3)

NE-1, 23 MAR 2023 to 20 APR 2023

NE-1, 23 MAR 2023 to 20 APR 2023